

## Product datasheet for **TA808841AM**

### **MAGEB3 Mouse Monoclonal Antibody (Biotin conjugated) [Clone ID: OTI7E2]**

#### **Product data:**

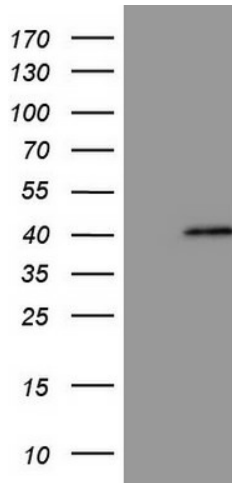
|                                |  |
|--------------------------------|--|
| <b>Product Type:</b>           | Primary Antibodies   |
| <b>Clone Name:</b>             | OTI7E2   |
| <b>Applications:</b>           | WB   |
| <b>Recommended Dilution:</b>   | WB 1:500   |
| <b>Reactivity:</b>             | Human  |
| <b>Host:</b>                   | Mouse  |
| <b>Isotype:</b>                | IgG2b  |
| <b>Clonality:</b>              | Monoclonal   |
| <b>Immunogen:</b>              | Full length human recombinant protein of human MAGEB3(NP_002356) produced in E.coli.   |
| <b>Formulation:</b>            | PBS (pH 7.3) containing 1% BSA, 50% glycerol and 0.02% sodium azide.   |
| <b>Concentration:</b>          | 0.5 mg/ml  |
| <b>Purification:</b>           | Purified from mouse ascites fluids or tissue culture supernatant by affinity chromatography (protein A/G)  |
| <b>Conjugation:</b>            | Biotin   |
| <b>Storage:</b>                | Store at -20°C as received.  |
| <b>Stability:</b>              | Stable for 12 months from date of receipt.   |
| <b>Predicted Protein Size:</b> | 39 kDa   |
| <b>Gene Name:</b>              | MAGE family member B3  |
| <b>Database Link:</b>          | <a href="#">NP_002356</a><br><a href="#">Entrez Gene 4114 Human</a><br><a href="#">O15480</a>  |
| <b>Background:</b>             | This gene is a MAGE-B subfamily member of the MAGE gene family. MAGE family member proteins direct the expression of tumor antigens recognized on a human melanoma by autologous cytolytic T lymphocytes. There are two known clusters of MAGE genes on chromosome X. The members of the MAGE-A subfamily are located in the Xq28 region, while the members of the MAGE-B subfamily are clustered in the Xp21 region. [provided by RefSeq, Jul 2008] |



[View online »](#)

Synonyms: CT3.5

**Product images:**



HEK293T cells were transfected with the pCMV6-ENTRY control (Left lane) or pCMV6-ENTRY MAGEB3 ([RC210237], Right lane) cDNA for 48 hrs and lysed. Equivalent amounts of cell lysates (5 ug per lane) were separated by SDS-PAGE and immunoblotted with anti-MAGEB3 (1:500). Positive lysates [LY419378] (100ug) and [LC419378] (20ug) can be purchased separately from OriGene.