

## Product datasheet for **TA808833AM**

### **POLDIP1 (KCTD13) Mouse Monoclonal Antibody (Biotin conjugated) [Clone ID: OTI3B5]**

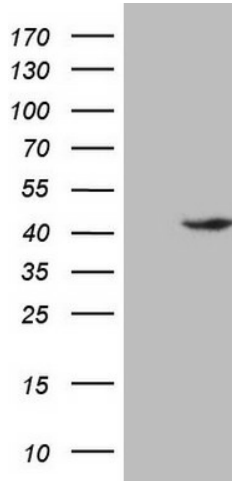
#### **Product data:**

Product Type:	Primary Antibodies
Clone Name:	OTI3B5
Applications:	WB
Recommended Dilution:	WB 1:2000
Reactivity:	Human, Mouse, Rat
Host:	Mouse
Isotype:	IgG2b
Clonality:	Monoclonal
Immunogen:	Full length human recombinant protein of human KCTD13(NP_849194) produced in E.coli.
Formulation:	PBS (pH 7.3) containing 1% BSA, 50% glycerol and 0.02% sodium azide.
Concentration:	0.5 mg/ml
Purification:	Purified from mouse ascites fluids or tissue culture supernatant by affinity chromatography (protein A/G)
Conjugation:	Biotin
Storage:	Store at -20°C as received.
Stability:	Stable for 12 months from date of receipt.
Predicted Protein Size:	36.2 kDa
Gene Name:	potassium channel tetramerization domain containing 13
Database Link:	<a href="#">NP_849194</a> <a href="#">Entrez Gene 233877 Mouse</a> <a href="#">Entrez Gene 293497 Rat</a> <a href="#">Entrez Gene 253980 Human</a> <a href="#">Q8WZ19</a>
Synonyms:	BACURD1; FKSG86; hBACURD1; PDIP1; POLDIP1
Protein Families:	Ion Channels: Other, Transcription Factors



[View online »](#)

**Product images:**



HEK293T cells were transfected with the pCMV6-ENTRY control (Left lane) or pCMV6-ENTRY KCTD13 ([RC206944], Right lane) cDNA for 48 hrs and lysed. Equivalent amounts of cell lysates (5 ug per lane) were separated by SDS-PAGE and immunoblotted with anti-KCTD13 (1:2000). Positive lysates [LY405827] (100ug) and [LC405827] (20ug) can be purchased separately from OriGene.