

## Product datasheet for **TA808832M**

### NGDN Mouse Monoclonal Antibody [Clone ID: OT11H4]

#### Product data:

Product Type:	Primary Antibodies
Clone Name:	OT11H4
Applications:	IHC, WB
Recommended Dilution:	WB 1:2000, IHC 1:150
Reactivity:	Human, Mouse, Rat
Host:	Mouse
Isotype:	IgG2b
Clonality:	Monoclonal
Immunogen:	Full length human recombinant protein of human NGDN (NP_001036100) produced in E.coli.
Formulation:	PBS (pH 7.3) containing 1% BSA, 50% glycerol and 0.02% sodium azide.
Concentration:	1 mg/ml
Purification:	Purified from mouse ascites fluids or tissue culture supernatant by affinity chromatography (protein A/G)
Conjugation:	Unconjugated
Storage:	Store at -20°C as received.
Stability:	Stable for 12 months from date of receipt.
Predicted Protein Size:	35.7 kDa
Gene Name:	neuroguidin
Database Link:	<a href="#">NP_001036100</a> <a href="#">Entrez Gene 25983 Human</a> <a href="#">Q8NEJ9</a>



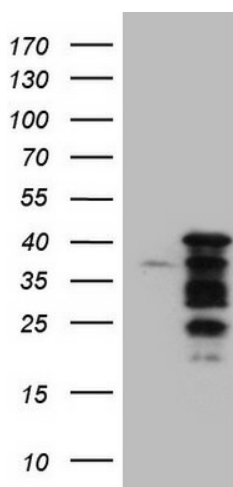
[View online »](#)

**Background:**

Neuroguidin is an EIF4E (MIM 133440)-binding protein that interacts with CPEB (MIM 607342) and functions as a translational regulatory protein during development of the vertebrate nervous system (Jung et al., 2006 [PubMed 16705177]). [supplied by OMIM, Mar 2008]. Transcript Variant: This variant (2) retains an intron, differing in the 3' UTR and coding sequence compared to variant 1. The resulting isoform (2) has a shorter and distinct C-terminus compared to isoform 1. ##Evidence-Data-START## Transcript exon combination :: AL050003.1 [ECO:0000332] RNAseq introns :: single sample supports all introns ERS025081, ERS025082 [ECO:0000348] ##Evidence-Data-END## COMPLETENESS: complete on the 3' end.

**Synonyms:**

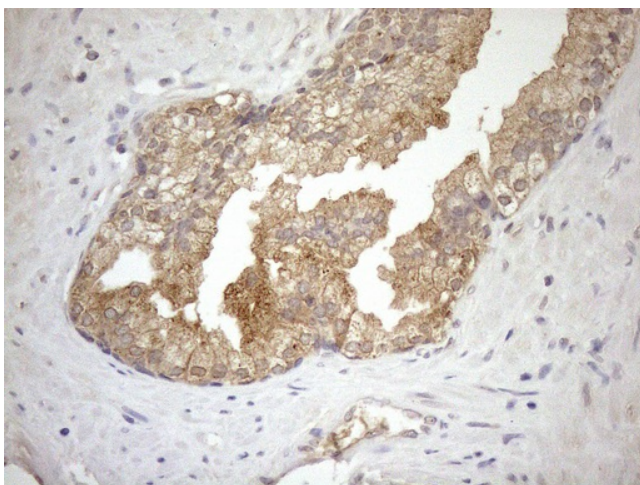
C14orf120; CANu1; LCP5; lpd-2; NGD

**Product images:**


HEK293T cells were transfected with the pCMV6-ENTRY control (Cat# [PS100001], Left lane) or pCMV6-ENTRY NGDN (Cat# [RC204792], Right lane) cDNA for 48 hrs and lysed. Equivalent amounts of cell lysates (5 ug per lane) were separated by SDS-PAGE and immunoblotted with anti-NGDN (Cat# [TA808832])(1:2000). Positive lysates [LY421013] (100ug) and [LC421013] (20ug) can be purchased separately from OriGene.



Immunohistochemical staining of paraffin-embedded Human prostate tissue within the normal limits using anti-NGDN mouse monoclonal antibody. Heat-induced epitope retrieval by EDTA solution buffer pH 8.0 at 120°C for 3 min.



Immunohistochemical staining of paraffin-embedded Carcinoma of Human prostate tissue using anti-NGDN mouse monoclonal antibody. Heat-induced epitope retrieval by EDTA solution buffer pH 8.0 at 120°C for 3 min.