

## Product datasheet for **TA808830AM**

### **MAST205 (MAST2) Mouse Monoclonal Antibody (Biotin conjugated) [Clone ID: OTI2A3]**

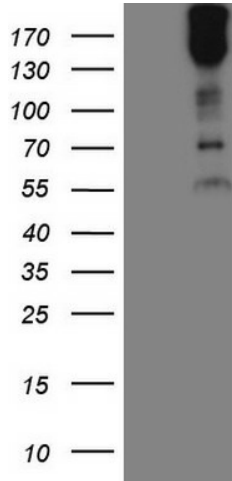
#### **Product data:**

Product Type:	Primary Antibodies
Clone Name:	OTI2A3
Applications:	WB
Recommended Dilution:	WB 1:2000
Reactivity:	Human, Mouse, Rat
Host:	Mouse
Isotype:	IgG1
Clonality:	Monoclonal
Immunogen:	Human recombinant protein fragment corresponding to amino acids 1482-1798 of human MAST2(NP_055927) produced in E.coli.
Formulation:	PBS (pH 7.3) containing 1% BSA, 50% glycerol and 0.02% sodium azide.
Concentration:	0.5 mg/ml
Purification:	Purified from mouse ascites fluids or tissue culture supernatant by affinity chromatography (protein A/G)
Conjugation:	Biotin
Storage:	Store at -20°C as received.
Stability:	Stable for 12 months from date of receipt.
Predicted Protein Size:	196.3 kDa
Gene Name:	microtubule associated serine/threonine kinase 2
Database Link:	<a href="#">NP_055927</a> <a href="#">Entrez Gene 17776 Mouse</a> <a href="#">Entrez Gene 23139 Human</a> <a href="#">Q6P0Q8</a>
Synonyms:	MAST205; MTSSK
Protein Families:	Druggable Genome, Protein Kinase



[View online »](#)

**Product images:**



HEK293T cells were transfected with the pCMV6-ENTRY control (Left lane) or pCMV6-ENTRY MAST2 ([RC209492], Right lane) cDNA for 48 hrs and lysed. Equivalent amounts of cell lysates (5 ug per lane) were separated by SDS-PAGE and immunoblotted with anti-MAST2 (1:2000). Positive lysates [LY402408] (100ug) and [LC402408] (20ug) can be purchased separately from OriGene.