

Product datasheet for **TA808825M**

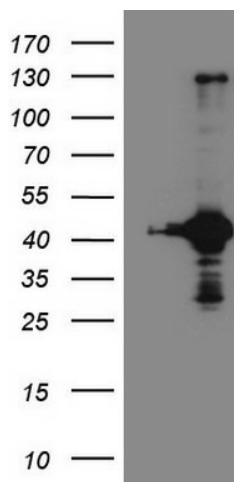
RPS6KC1 Mouse Monoclonal Antibody [Clone ID: OTI10F11]

Product data:

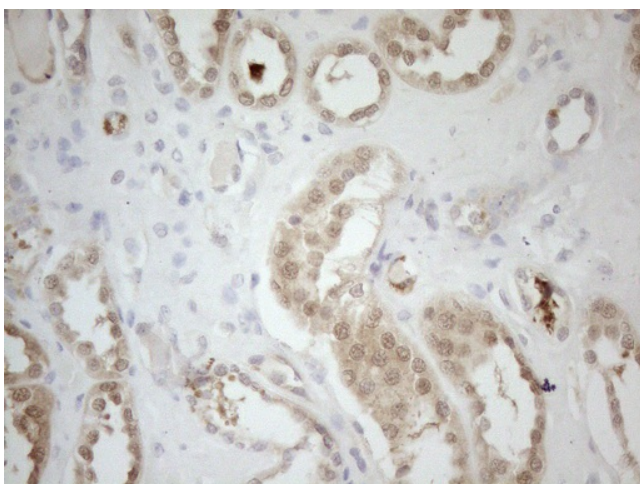
| | |
|-------------------------|---|
| Product Type: | Primary Antibodies |
| Clone Name: | OTI10F11 |
| Applications: | IHC, WB |
| Recommended Dilution: | WB 1:2000, IHC 1:150 |
| Reactivity: | Human |
| Host: | Mouse |
| Isotype: | IgG1 |
| Clonality: | Monoclonal |
| Immunogen: | Human recombinant protein fragment corresponding to amino acids 1-305 of human RPS6KC1(NP_036556) produced in E.coli. |
| Formulation: | PBS (pH 7.3) containing 1% BSA, 50% glycerol and 0.02% sodium azide. |
| Concentration: | 1 mg/ml |
| Purification: | Purified from mouse ascites fluids or tissue culture supernatant by affinity chromatography (protein A/G) |
| Conjugation: | Unconjugated |
| Storage: | Store at -20°C as received. |
| Stability: | Stable for 12 months from date of receipt. |
| Predicted Protein Size: | 118.5 kDa |
| Gene Name: | ribosomal protein S6 kinase C1 |
| Database Link: | NP_036556 Entrez Gene 26750 Human Q96S38 |
| Background: | May be involved in transmitting sphingosine-1 phosphate (SPP)-mediated signaling into the cell. [UniProtKB/Swiss-Prot Function] |
| Synonyms: | humS6PKh1; RPK118; S6K-delta-1; S6PKh1 |
| Protein Families: | Druggable Genome, Protein Kinase |

[View online »](#)

Product images:



HEK293T cells were transfected with the pCMV6-ENTRY control (Cat# [PS100001], Left lane) or pCMV6-ENTRY RPS6KC1 (Cat# [RC211142], Right lane) cDNA for 48 hrs and lysed. Equivalent amounts of cell lysates (5 ug per lane) were separated by SDS-PAGE and immunoblotted with anti-RPS6KC1 (Cat# [TA808825])(1:2000). Positive lysates [LY402211] (100ug) and [LC402211] (20ug) can be purchased separately from OriGene.



Immunohistochemical staining of paraffin-embedded Human Kidney tissue using anti-RPS6KC1 mouse monoclonal antibody. Heat-induced epitope retrieval by EDTA solution buffer pH 8.0 at 120°C for 3 min.