

Product datasheet for **TA808825AM**

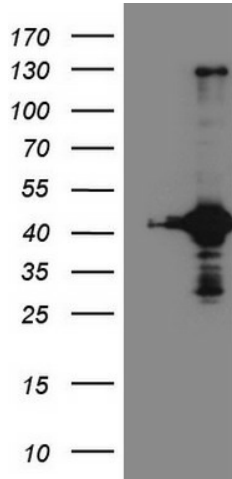
RPS6KC1 Mouse Monoclonal Antibody (Biotin conjugated) [Clone ID: OTI10F11]

Product data:

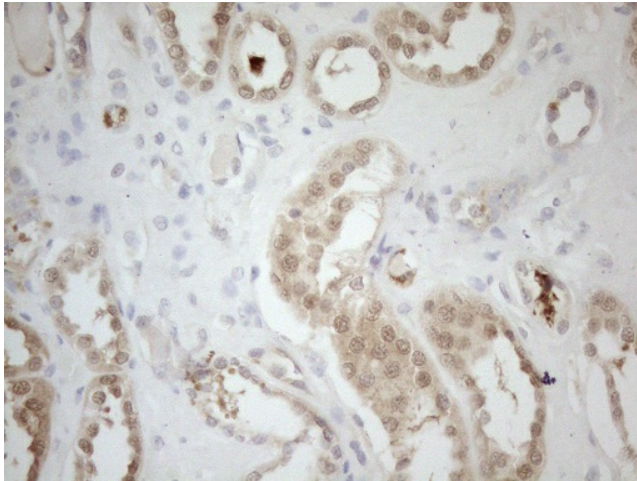
Product Type:	Primary Antibodies
Clone Name:	OTI10F11
Applications:	IHC, WB
Recommended Dilution:	WB 1:2000, IHC 1:150
Reactivity:	Human
Host:	Mouse
Isotype:	IgG1
Clonality:	Monoclonal
Immunogen:	Human recombinant protein fragment corresponding to amino acids 1-305 of human RPS6KC1(NP_036556) produced in E.coli.
Formulation:	PBS (pH 7.3) containing 1% BSA, 50% glycerol and 0.02% sodium azide.
Concentration:	0.5 mg/ml
Purification:	Purified from mouse ascites fluids or tissue culture supernatant by affinity chromatography (protein A/G)
Conjugation:	Biotin
Storage:	Store at -20°C as received.
Stability:	Stable for 12 months from date of receipt.
Predicted Protein Size:	118.5 kDa
Gene Name:	ribosomal protein S6 kinase C1
Database Link:	NP_036556 Entrez Gene 26750 Human Q96S38
Background:	May be involved in transmitting sphingosine-1 phosphate (SPP)-mediated signaling into the cell. [UniProtKB/Swiss-Prot Function]
Synonyms:	humS6PKh1; RPK118; S6K-delta-1; S6PKh1
Protein Families:	Druggable Genome, Protein Kinase



[View online »](#)

Product images:

HEK293T cells were transfected with the pCMV6-ENTRY control (Cat# [PS100001], Left lane) or pCMV6-ENTRY RPS6KC1 (Cat# [RC211142], Right lane) cDNA for 48 hrs and lysed. Equivalent amounts of cell lysates (5 ug per lane) were separated by SDS-PAGE and immunoblotted with anti-RPS6KC1 (Cat# [TA808825])(1:2000). Positive lysates [LY402211] (100ug) and [LC402211] (20ug) can be purchased separately from OriGene.



Immunohistochemical staining of paraffin-embedded Human Kidney tissue using anti-RPS6KC1 mouse monoclonal antibody. (Heat-induced epitope retrieval by 1mM EDTA in 10mM Tris buffer (pH8.5) at 120°C for 3min, [TA808825]) (1:150)