

## Product datasheet for **TA808824**

### Gemin 2 (GEMIN2) Mouse Monoclonal Antibody [Clone ID: OTI4A2]

#### Product data:

Product Type:	Primary Antibodies
Clone Name:	OTI4A2
Applications:	WB
Recommended Dilution:	WB 1:2000
Reactivity:	Human, Mouse, Rat
Host:	Mouse
Isotype:	IgG1
Clonality:	Monoclonal
Immunogen:	Full length human recombinant protein of human SIP1 (NP_003607) produced in E.coli.
Formulation:	PBS (pH 7.3) containing 1% BSA, 50% glycerol and 0.02% sodium azide.
Concentration:	1 mg/ml
Purification:	Purified from mouse ascites fluids or tissue culture supernatant by affinity chromatography (protein A/G)
Conjugation:	Unconjugated
Storage:	Store at -20°C as received.
Stability:	Stable for 12 months from date of receipt.
Predicted Protein Size:	31.4 kDa
Gene Name:	gem nuclear organelle associated protein 2
Database Link:	<a href="#">NP_003607</a> <a href="#">Entrez Gene 66603 Mouse</a> <a href="#">Entrez Gene 84404 Rat</a> <a href="#">Entrez Gene 8487 Human</a> <a href="#">O14893</a>
Background:	This gene encodes one of the proteins found in the SMN complex, which consists of several gemin proteins and the protein known as the survival of motor neuron protein. The SMN complex is localized to a subnuclear compartment called gems (gemini of coiled bodies) and is required for assembly of spliceosomal snRNPs and for pre-mRNA splicing. This protein interacts directly with the survival of motor neuron protein and it is required for formation of the SMN complex. A knockout mouse targeting the mouse homolog of this gene exhibited disrupted snRNP assembly and motor neuron degeneration. [provided by RefSeq, Aug 2011]

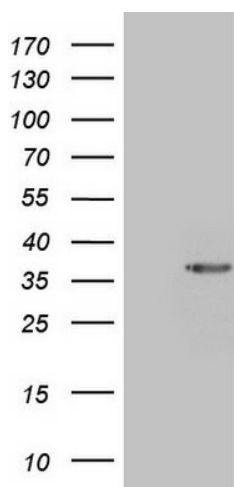


[View online »](#)

Synonyms: SIP1; SIP1-delta

Protein Families: Druggable Genome, Stem cell - Pluripotency

### Product images:



HEK293T cells were transfected with the pCMV6-ENTRY control (Left lane) or pCMV6-ENTRY SIP1 ([RC211219], Right lane) cDNA for 48 hrs and lysed. Equivalent amounts of cell lysates (5 ug per lane) were separated by SDS-PAGE and immunoblotted with anti-SIP1 (1:2000). Positive lysates [LY418547] (100ug) and [LC418547] (20ug) can be purchased separately from OriGene.