

Product datasheet for **TA808802BM**

POLDIP1 (KCTD13) Mouse Monoclonal Antibody (HRP conjugated) [Clone ID: OTI1A4]

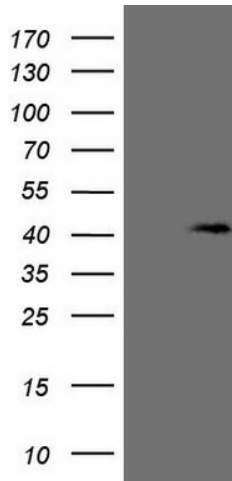
Product data:

| | |
|-------------------------|---|
| Product Type: | Primary Antibodies |
| Clone Name: | OTI1A4 |
| Applications: | WB |
| Recommended Dilution: | WB 1:2000 |
| Reactivity: | Human, Mouse, Rat |
| Host: | Mouse |
| Isotype: | IgG1 |
| Clonality: | Monoclonal |
| Immunogen: | Full length human recombinant protein of human KCTD13(NP_849194) produced in E.coli. |
| Formulation: | PBS (pH 7.3) containing 1% BSA, 50% glycerol. |
| Concentration: | 0.5 mg/ml |
| Purification: | Purified from mouse ascites fluids or tissue culture supernatant by affinity chromatography (protein A/G) |
| Conjugation: | HRP |
| Storage: | Store at -20°C as received. |
| Stability: | Stable for 12 months from date of receipt. |
| Predicted Protein Size: | 36.2 kDa |
| Gene Name: | potassium channel tetramerization domain containing 13 |
| Database Link: | NP_849194 Entrez Gene 233877 Mouse Entrez Gene 293497 Rat Entrez Gene 253980 Human Q8WZ19 |
| Synonyms: | BACURD1; FKSG86; hBACURD1; PDIP1; POLDIP1 |
| Protein Families: | Ion Channels: Other, Transcription Factors |



[View online »](#)

Product images:



HEK293T cells were transfected with the pCMV6-ENTRY control (Left lane) or pCMV6-ENTRY KCTD13 ([RC206944], Right lane) cDNA for 48 hrs and lysed. Equivalent amounts of cell lysates (5 ug per lane) were separated by SDS-PAGE and immunoblotted with anti-KCTD13 (1:2000). Positive lysates [LY405827] (100ug) and [LC405827] (20ug) can be purchased separately from OriGene.