

Product datasheet for **TA808790M**

MAST205 (MAST2) Mouse Monoclonal Antibody [Clone ID: OTI3A5]

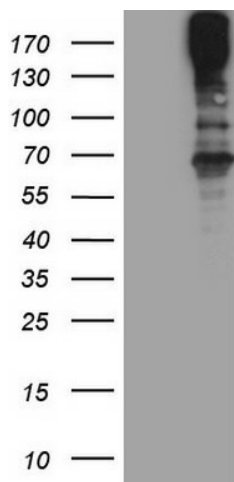
Product data:

| | |
|-------------------------|--|
| Product Type: | Primary Antibodies |
| Clone Name: | OTI3A5 |
| Applications: | WB |
| Recommended Dilution: | WB 1:2000 |
| Reactivity: | Human, Mouse, Rat |
| Host: | Mouse |
| Isotype: | IgG1 |
| Clonality: | Monoclonal |
| Immunogen: | Human recombinant protein fragment corresponding to amino acids 1482-1798 of human MAST2(NP_055927) produced in E.coli. |
| Formulation: | PBS (pH 7.3) containing 1% BSA, 50% glycerol and 0.02% sodium azide. |
| Concentration: | 1 mg/ml |
| Purification: | Purified from mouse ascites fluids or tissue culture supernatant by affinity chromatography (protein A/G) |
| Conjugation: | Unconjugated |
| Storage: | Store at -20°C as received. |
| Stability: | Stable for 12 months from date of receipt. |
| Predicted Protein Size: | 196.3 kDa |
| Gene Name: | microtubule associated serine/threonine kinase 2 |
| Database Link: | NP_055927 Entrez Gene 17776 Mouse Entrez Gene 23139 Human Q6P0Q8 |
| Synonyms: | MAST205; MTSSK |
| Protein Families: | Druggable Genome, Protein Kinase |

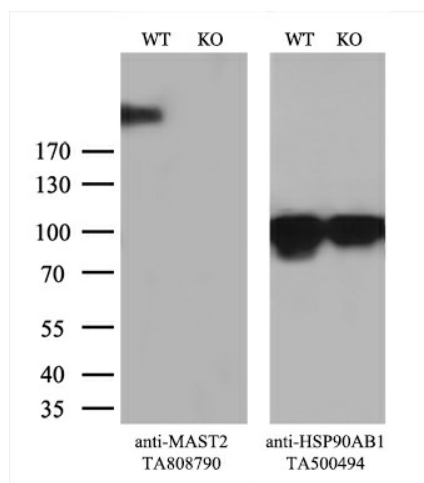


[View online »](#)

Product images:



HEK293T cells were transfected with the pCMV6-ENTRY control (Cat# [PS100001], Left lane) or pCMV6-ENTRY MAST2 (Cat# [RC209492], Right lane) cDNA for 48 hrs and lysed. Equivalent amounts of cell lysates (5 ug per lane) were separated by SDS-PAGE and immunoblotted with anti-MAST2 (Cat# [TA808790])(1:2000). Positive lysates [LY402408] (100ug) and [LC402408] (20ug) can be purchased separately from OriGene.



Equivalent amounts of cell lysates (10 ug per lane) of wild-type HeLa cells (WT, Cat# LC810HELA) and MAST2-Knockout HeLa cells (KO, Cat# [LC830654]) were separated by SDS-PAGE and immunoblotted with anti-MAST2 monoclonal antibody [TA808790] (1:100). Then the blotted membrane was stripped and reprobed with anti-HSP90 antibody as a loading control.