

Product datasheet for **TA808782AM**

CIAPIN1 Mouse Monoclonal Antibody (Biotin conjugated) [Clone ID: OTI2F1]

Product data:

Product Type:	Primary Antibodies
Clone Name:	OTI2F1
Applications:	IHC, WB
Recommended Dilution:	WB 1:2000, IHC 1:150
Reactivity:	Human
Host:	Mouse
Isotype:	IgG1
Clonality:	Monoclonal
Immunogen:	Human recombinant protein fragment corresponding to amino acids 97-312 of human CIAPIN1(NP_064709) produced in E.coli.
Formulation:	PBS (pH 7.3) containing 1% BSA, 50% glycerol and 0.02% sodium azide.
Concentration:	0.5 mg/ml
Purification:	Purified from mouse ascites fluids or tissue culture supernatant by affinity chromatography (protein A/G)
Conjugation:	Biotin
Storage:	Store at -20°C as received.
Stability:	Stable for 12 months from date of receipt.
Predicted Protein Size:	33.4 kDa
Gene Name:	cytokine induced apoptosis inhibitor 1
Database Link:	NP_064709 Entrez Gene 57019 Human Q6FI81



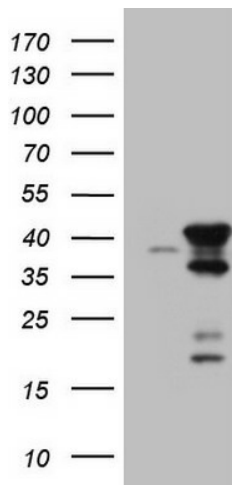
[View online »](#)

Background:

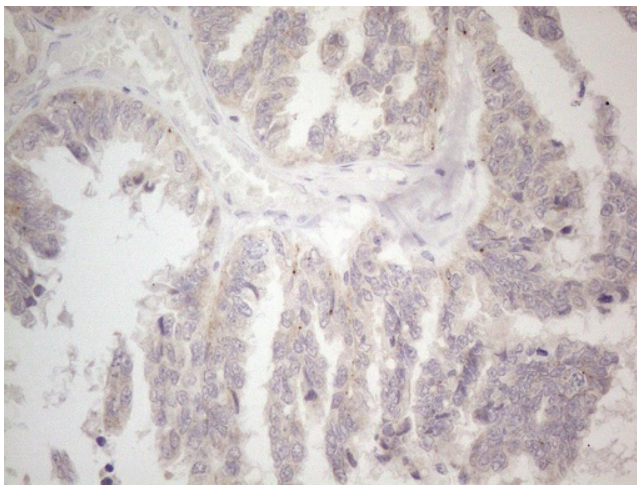
CIAPIN1 is a cytokine-induced inhibitor of apoptosis with no relation to apoptosis regulatory molecules of the BCL2 (MIM 151430) or CASP (see MIM 147678) families. Expression of CIAPIN1 is dependent on growth factor stimulation (Shibayama et al., 2004 [PubMed 14970183]). [supplied by OMIM, Mar 2008]. Publication Note: This RefSeq record includes a subset of the publications that are available for this gene. Please see the Gene record to access additional publications. ##Evidence-Data-START## Transcript exon combination :: AF248964.1, BC067303.1 [ECO:0000332] RNAseq introns :: single sample supports all introns ERS025087 [ECO:0000348] ##Evidence-Data-END##

Synonyms:

Anamorsin; DRE2; PRO0915

Product images:


HEK293T cells were transfected with the pCMV6-ENTRY control (Left lane) or pCMV6-ENTRY CIAPIN1 ([RC209626], Right lane) cDNA for 48 hrs and lysed. Equivalent amounts of cell lysates (5 ug per lane) were separated by SDS-PAGE and immunoblotted with anti-CIAPIN1 (1:2000). Positive lysates [LY412554] (100ug) and [LC412554] (20ug) can be purchased separately from OriGene.



Immunohistochemical staining of paraffin-embedded Adenocarcinoma of Human ovary tissue using anti-CIAPIN1 mouse monoclonal antibody. (Heat-induced epitope retrieval by 1mM EDTA in 10mM Tris buffer (pH8.5) at 120°C for 3min, [TA808782]) (1:150)