

## Product datasheet for **TA808771**

### PD-L1 (CD274) Mouse Monoclonal Antibody [Clone ID: OTI9E12]

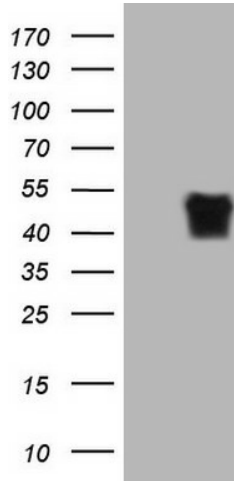
#### Product data:

Product Type:	Primary Antibodies
Clone Name:	OTI9E12
Applications:	ELISA, FC, IF, LMNX, WB
Recommended Dilution:	WB 1:500
Reactivity:	Human
Host:	Mouse
Isotype:	IgG1
Clonality:	Monoclonal
Immunogen:	Human recombinant protein fragment corresponding to amino acids 19-239 of human PD-L1/CD274(NP_054862) produced in HEK293 cells.
Formulation:	PBS (PH 7.3) containing 1% BSA, 50% glycerol and 0.02% sodium azide.
Concentration:	1 mg/ml
Purification:	Purified from mouse ascites fluids or tissue culture supernatant by affinity chromatography (protein A/G)
Conjugation:	Unconjugated
Storage:	Store at -20°C as received.
Stability:	Stable for 12 months from date of receipt.
Predicted Protein Size:	31 kDa
Gene Name:	CD274 molecule
Database Link:	<a href="#">NP_054862</a> <a href="#">Entrez Gene 29126 Human</a> <a href="#">Q9NZQ7</a>
Synonyms:	B7-H; B7H1; PD-L1; PDCD1L1; PDCD1LG1; PDL1
Protein Families:	Druggable Genome, Transmembrane
Protein Pathways:	Cell adhesion molecules (CAMs)

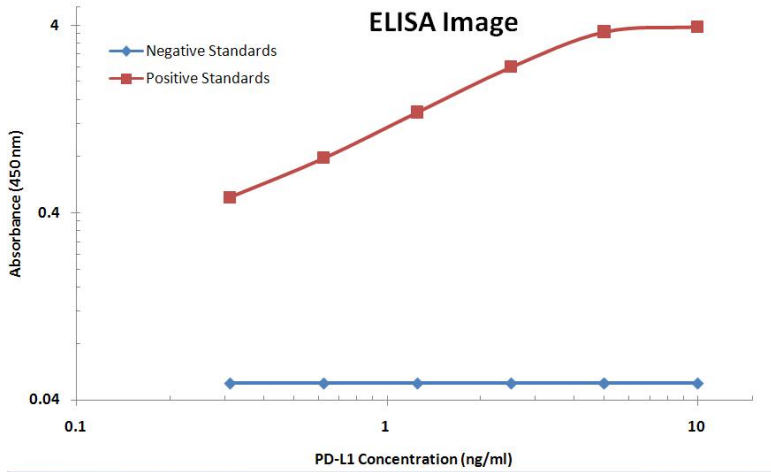


[View online »](#)

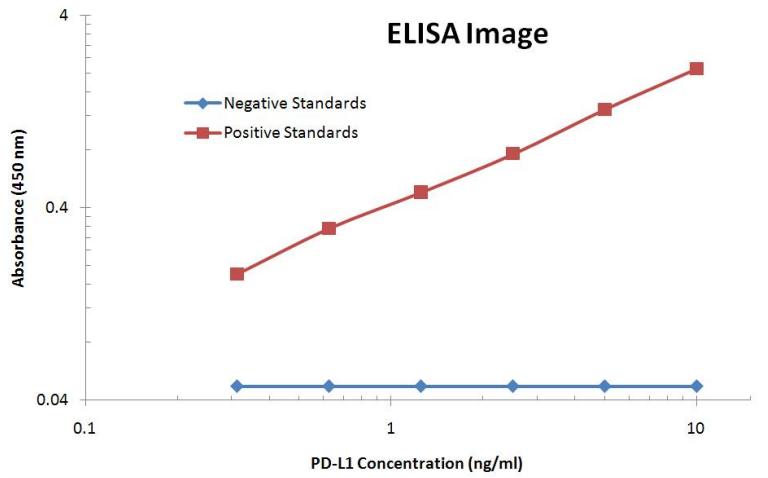
Product images:



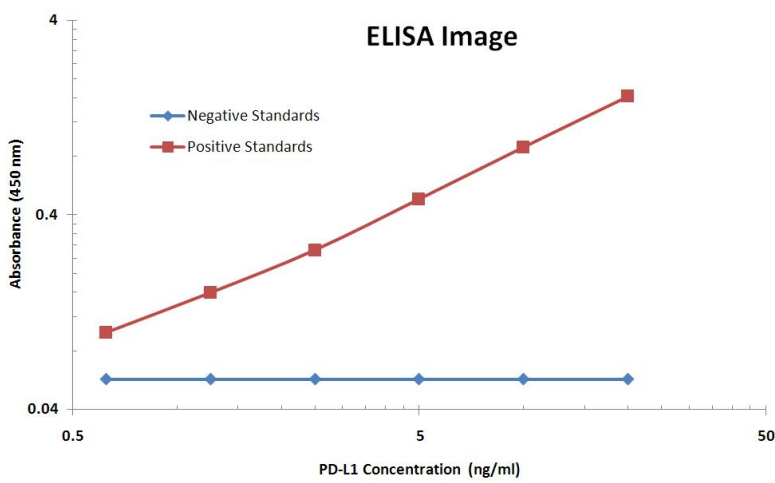
HEK293T cells were transfected with the pCMV6-ENTRY control (Left lane) or pCMV6-ENTRY CD274 ([RC213071], Right lane) cDNA for 48 hrs and lysed. Equivalent amounts of cell lysates (5 ug per lane) were separated by SDS-PAGE and immunoblotted with anti-CD274 (1:500). Positive lysates [LY415473] (100ug) and [LC415473] (20ug) can be purchased separately from OriGene.



PD-L1 ELISA with 13G7 Capture ([TA809809]) and 9E12 Detection (TA808771) Antibodies. Substrate used: Recombinant Human PD-L1 ([TP700201])



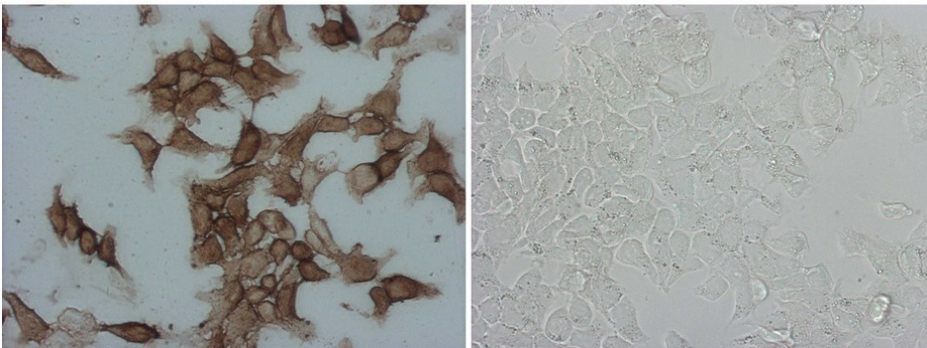
PD-L1 ELISA with 9E12 Capture (TA808771) and 4D4 Detection ([TA507099]) Antibodies. Substrate used: Recombinant Human PD-L1 ([TP700201])



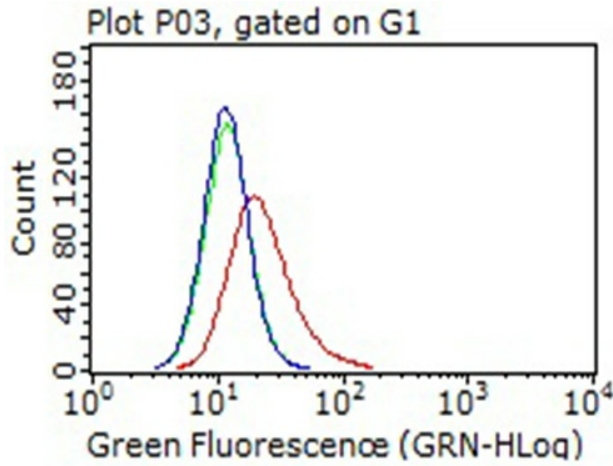
PD-L1 ELISA with 2C7 Capture ([TA507087]) and 9E12 Detection (TA808771) Antibodies. Substrate used: Recombinant Human PD-L1 ([TP700201])

CD274

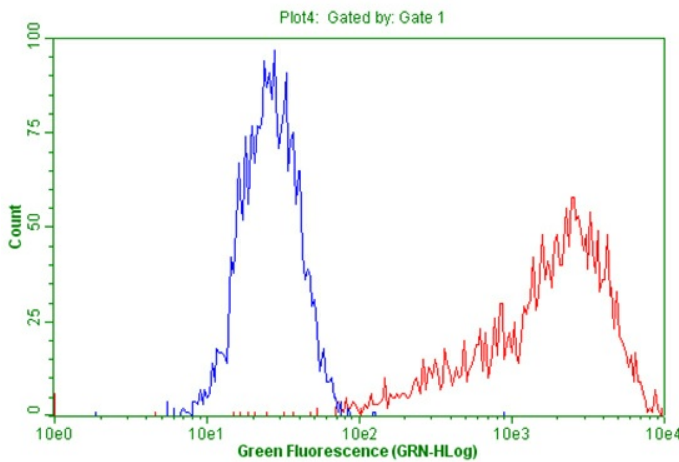
293T



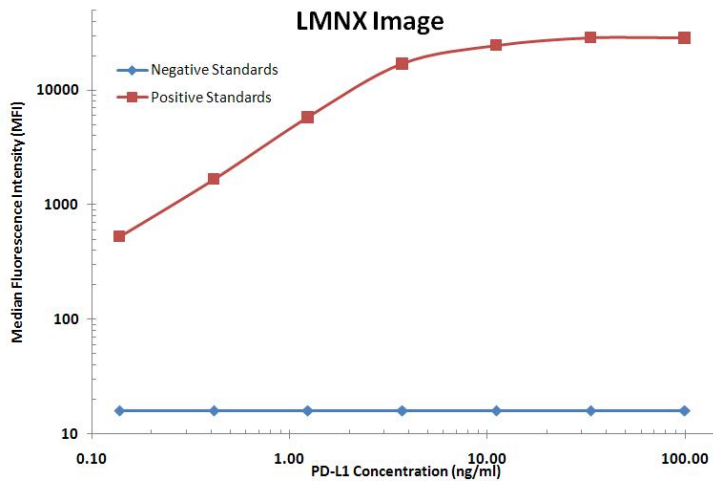
Immunocytochemistry staining of stable expression CD274 cells using anti-CD274 mouse monoclonal antibody (TA808771) (Left). The right is negative control. (1:5000) (1:2000)



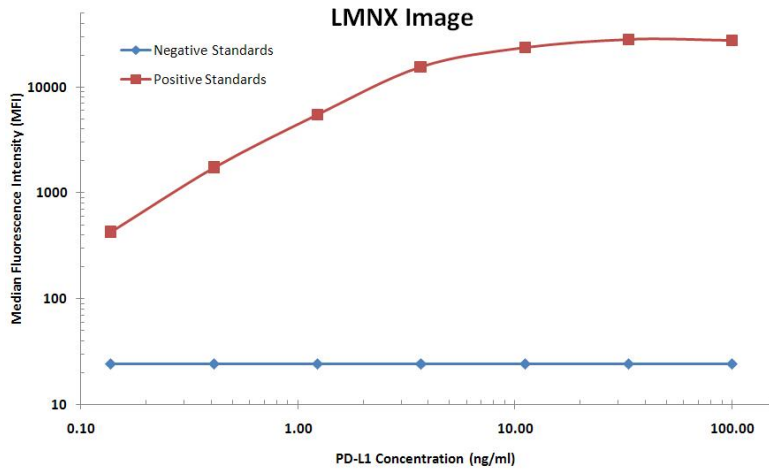
Flow cytometric Analysis of HCC78 cells, using anti-PDL1 antibody (TA808771), (Red), compared to isotype control, (green), and negative control (PBS), (Blue) (1:100).



Flow cytometric Analysis of stable expression CD274 ([RC213071]) in HEK293T cells (Red) compared to negative control HEK293T cells (Blue) using anti-CD274 antibody (TA808771) (1:100).



PD-L1 Luminex ELISA with 9E12 Capture (TA808771) and 4D4 Detection ([TA507099]) Antibodies. Substrate used: Recombinant Human PD-L1 ([TP700201])



PD-L1 Luminex ELISA with 2C7 Capture ([TA507087]) and 9E12 Detection (TA808771) Antibodies. Substrate used: Recombinant Human PD-L1 ([TP700201])