

Product datasheet for **TA808748**

LGR5 Mouse Monoclonal Antibody [Clone ID: OTI3F1]

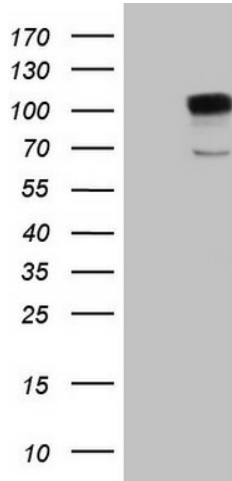
Product data:

Product Type:	Primary Antibodies
Clone Name:	OTI3F1
Applications:	FC, WB
Recommended Dilution:	FLOW 1:50~100
Reactivity:	Human, Mouse, Rat
Host:	Mouse
Isotype:	IgG2a
Clonality:	Monoclonal
Immunogen:	Human recombinant protein fragment corresponding to amino acids 22-543 of human LGR5 (NP_003658) produced in HEK293 cell.
Formulation:	PBS (pH 7.3) containing 1% BSA, 50% glycerol and 0.02% sodium azide.
Concentration:	1 mg/ml
Purification:	Purified from mouse ascites fluids or tissue culture supernatant by affinity chromatography (protein A/G)
Conjugation:	Unconjugated
Storage:	Store at -20°C as received.
Stability:	Stable for 12 months from date of receipt.
Predicted Protein Size:	99.8 kDa
Gene Name:	leucine-rich repeat containing G protein-coupled receptor 5
Database Link:	NP_003658 Entrez Gene 14160 Mouse Entrez Gene 299802 Rat Entrez Gene 8549 Human O75473
Synonyms:	FEX; GPR49; GPR67; GRP49; HG38
Protein Families:	Druggable Genome, GPCR, Transmembrane

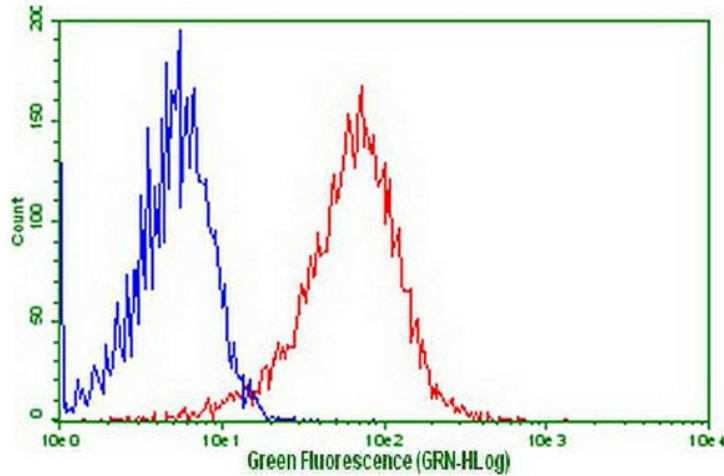


[View online »](#)

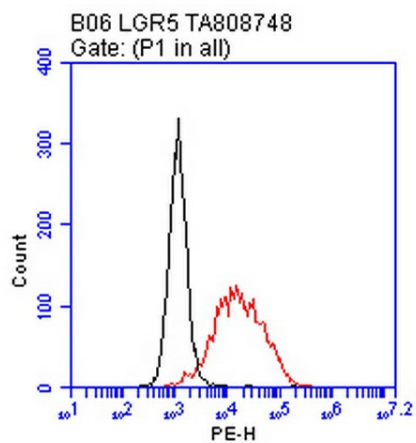
Product images:



HEK293T cells were transfected with the pCMV6-ENTRY control (Left lane) or pCMV6-ENTRY LGR5 ([RC212825], Right lane) cDNA for 48 hrs and lysed. Equivalent amounts of cell lysates (5 ug per lane) were separated by SDS-PAGE and immunoblotted with anti-LGR5 (1:2000). Positive lysates [LY401213] (100ug) and [LC401213] (20ug) can be purchased separately from OriGene.



Flow cytometric Analysis of stable transfection cell line LGR5 ([RC212825]) (Red) compared to negative control HEK293T cell line (blue) using anti-LGR5 antibody (TA808748) (1:50)



Flow cytometric analysis of the stable expression of LGR5 ([RC212825]) in NIH3T3 cells using anti-LGR5 antibody (TA808748) (Red) compared to a nonspecific negative control antibody (Black). (1:100), surface stained on live cells