

## Product datasheet for **TA808743S**

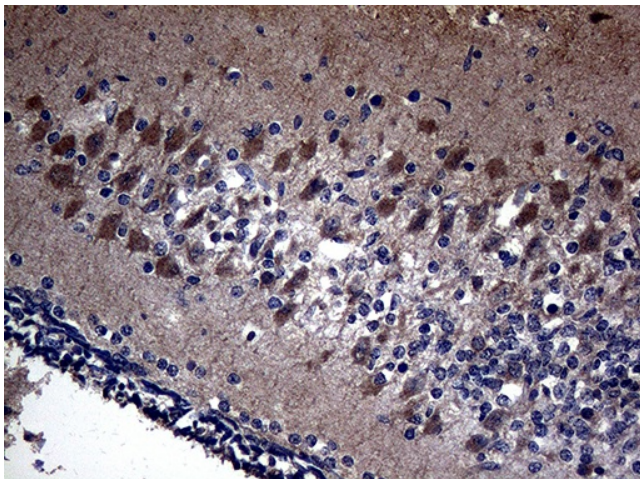
### **KAL1 (ANOS1) Mouse Monoclonal Antibody [Clone ID: OTI5E10]**

#### **Product data:**

Product Type:	Primary Antibodies
Clone Name:	OTI5E10
Applications:	IHC
Recommended Dilution:	IHC 1:500
Reactivity:	Human
Host:	Mouse
Isotype:	IgG2a
Clonality:	Monoclonal
Immunogen:	Human recombinant protein fragment corresponding to amino acids 129-373 of human KAL1(NP_000207) produced in E.coli.
Formulation:	PBS (pH 7.3) containing 1% BSA, 50% glycerol and 0.02% sodium azide.
Concentration:	1 mg/ml
Purification:	Purified from mouse ascites fluids or tissue culture supernatant by affinity chromatography (protein A/G)
Conjugation:	Unconjugated
Storage:	Store at -20°C as received.
Stability:	Stable for 12 months from date of receipt.
Gene Name:	anosmin 1
Database Link:	<a href="#">NP_000207</a> <a href="#">Entrez Gene 3730 Human P23352</a>
Background:	Mutations in this gene cause the X-linked Kallmann syndrome. The encoded protein is similar in sequence to proteins known to function in neural cell adhesion and axonal migration. In addition, this cell surface protein is N-glycosylated and may have anti-protease activity. [provided by RefSeq, Jul 2008]
Synonyms:	ADMLX; HH1; HHA; KAL; KAL1; KALIG-1; KMS; WFDC19



[View online »](#)

**Product images:**

Immunohistochemical staining of paraffin-embedded Human embryonic cerebellum within the normal limits using anti-KAL1 mouse monoclonal antibody. (Heat-induced epitope retrieval by 1mM EDTA in 10mM Tris buffer (pH8.5) at 120°C for 3min, [TA808743]) (1:500)