

## Product datasheet for **TA808743**

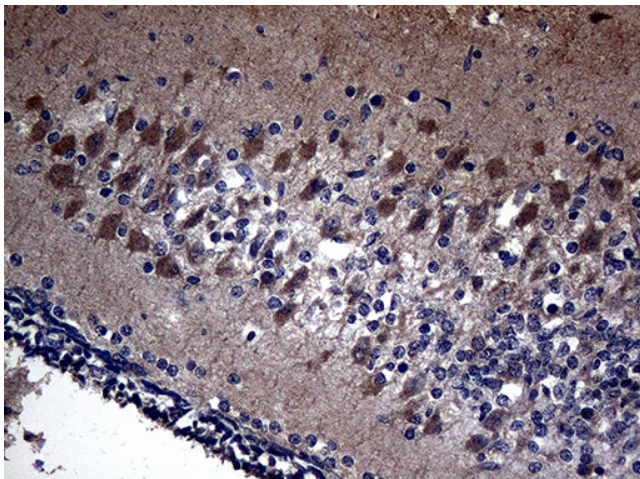
### **KAL1 (ANOS1) Mouse Monoclonal Antibody [Clone ID: OTI5E10]**

#### **Product data:**

<b>Product Type:</b>	Primary Antibodies
<b>Clone Name:</b>	OTI5E10
<b>Applications:</b>	IHC
<b>Recommended Dilution:</b>	IHC 1:500
<b>Reactivity:</b>	Human
<b>Host:</b>	Mouse
<b>Isotype:</b>	IgG2a
<b>Clonality:</b>	Monoclonal
<b>Immunogen:</b>	Human recombinant protein fragment corresponding to amino acids 129-373 of human KAL1(NP_000207) produced in E.coli.
<b>Formulation:</b>	PBS (pH 7.3) containing 1% BSA, 50% glycerol and 0.02% sodium azide.
<b>Concentration:</b>	1 mg/ml
<b>Purification:</b>	Purified from mouse ascites fluids or tissue culture supernatant by affinity chromatography (protein A/G)
<b>Conjugation:</b>	Unconjugated
<b>Storage:</b>	Store at -20°C as received.
<b>Stability:</b>	Stable for 12 months from date of receipt.
<b>Gene Name:</b>	anosmin 1
<b>Database Link:</b>	<a href="#">NP_000207</a> <a href="#">Entrez Gene 3730 Human P23352</a>
<b>Background:</b>	Mutations in this gene cause the X-linked Kallmann syndrome. The encoded protein is similar in sequence to proteins known to function in neural cell adhesion and axonal migration. In addition, this cell surface protein is N-glycosylated and may have anti-protease activity. [provided by RefSeq, Jul 2008]
<b>Synonyms:</b>	ADMLX; HH1; HHA; KAL; KAL1; KALIG-1; KMS; WFDC19



[View online »](#)

**Product images:**

Immunohistochemical staining of paraffin-embedded Human embryonic cerebellum within the normal limits using anti-KAL1 mouse monoclonal antibody. (Heat-induced epitope retrieval by 1mM EDTA in 10mM Tris buffer (pH8.5) at 120°C for 3min, TA808743) (1:500)