

## Product datasheet for **TA808730AM**

### MAP3K15 Mouse Monoclonal Antibody (Biotin conjugated) [Clone ID: OTI1G10]

#### Product data:

|                         |   |
|-------------------------|---|
| Product Type:           | Primary Antibodies  |
| Clone Name:             | OTI1G10   |
| Applications:           | WB  |
| Recommended Dilution:   | WB 1:2000   |
| Reactivity:             | Human, Mouse, Rat   |
| Host:                   | Mouse   |
| Isotype:                | IgG1  |
| Clonality:              | Monoclonal  |
| Immunogen:              | Human recombinant protein fragment corresponding to amino acids 979-1313 of human MAP3K15(NP_001001671) produced in E.coli.   |
| Formulation:            | PBS (pH 7.3) containing 1% BSA, 50% glycerol and 0.02% sodium azide.  |
| Concentration:          | 0.5 mg/ml   |
| Purification:           | Purified from mouse ascites fluids or tissue culture supernatant by affinity chromatography (protein A/G)   |
| Conjugation:            | Biotin  |
| Storage:                | Store at -20°C as received.   |
| Stability:              | Stable for 12 months from date of receipt.  |
| Predicted Protein Size: | 88.94 kDa   |
| Gene Name:              | mitogen-activated protein kinase kinase kinase 15   |
| Database Link:          | <a href="#">NP_001001671</a><br><a href="#">Entrez Gene 389840 Human</a><br><a href="#">Q6ZN16</a>  |
| Background:             | The protein encoded by this gene is a member of the mitogen-activated protein kinase (MAPK) family. These family members function in a protein kinase signal transduction cascade, where an activated MAPK kinase kinase (MAP3K) phosphorylates and activates a specific MAPK kinase (MAP2K), which then activates a specific MAPK. This MAP3K protein plays an essential role in apoptotic cell death triggered by cellular stresses. [provided by RefSeq, Jul 2010] |

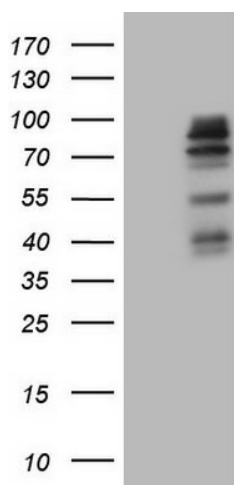


[View online »](#)

Synonyms: ASK3; bA723P2.3

Protein Families: Druggable Genome, Protein Kinase

### Product images:



HEK293T cells were transfected with the pCMV6-ENTRY control (Cat# [PS100001], Left lane) or pCMV6-ENTRY MAP3K15 (Cat# [RC223307], Right lane) cDNA for 48 hrs and lysed. Equivalent amounts of cell lysates (5 ug per lane) were separated by SDS-PAGE and immunoblotted with anti-MAP3K15 (Cat# [TA808730])(1:2000). Positive lysates [LY400363] (100ug) and [LC400363] (20ug) can be purchased separately from OriGene.