

## Product datasheet for **TA808717AM**

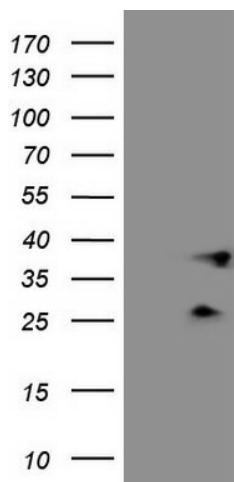
### PLCXD1 Mouse Monoclonal Antibody (Biotin conjugated) [Clone ID: OTI9D4]

#### Product data:

Product Type:	Primary Antibodies
Clone Name:	OTI9D4
Applications:	WB
Recommended Dilution:	WB 1:2000
Reactivity:	Human
Host:	Mouse
Isotype:	IgG2a
Clonality:	Monoclonal
Immunogen:	Full length human recombinant protein of human PLCXD1(NP_060860) produced in E.coli.
Formulation:	PBS (pH 7.3) containing 1% BSA, 50% glycerol and 0.02% sodium azide.
Concentration:	0.5 mg/ml
Purification:	Purified from mouse ascites fluids or tissue culture supernatant by affinity chromatography (protein A/G)
Conjugation:	Biotin
Storage:	Store at -20°C as received.
Stability:	Stable for 12 months from date of receipt.
Predicted Protein Size:	36.5 kDa
Gene Name:	phosphatidylinositol specific phospholipase C X domain containing 1
Database Link:	<a href="#">NP_060860</a> <a href="#">Entrez Gene 55344 Human</a> <a href="#">Q9NUJ7</a>
Background:	This gene is the most terminal protein-coding gene in the pseudoautosomal (PAR) region on chromosomes X and Y. Alternate splicing results in multiple transcript variants. [provided by RefSeq, Mar 2010]
Synonyms:	LLOXNC01-136G2.1



[View online »](#)

**Product images:**

HEK293T cells were transfected with the pCMV6-ENTRY control (Left lane) or pCMV6-ENTRY PLCXD1 ([RC202835], Right lane) cDNA for 48 hrs and lysed. Equivalent amounts of cell lysates (5 ug per lane) were separated by SDS-PAGE and immunoblotted with anti-PLCXD1 (1:2000). Positive lysates [LY413089] (100ug) and [LC413089] (20ug) can be purchased separately from OriGene.