

Product datasheet for **TA808715S**

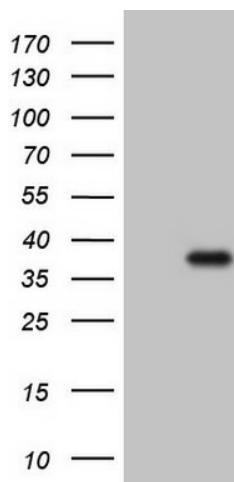
CTDSP2 Mouse Monoclonal Antibody [Clone ID: OTI10G10]

Product data:

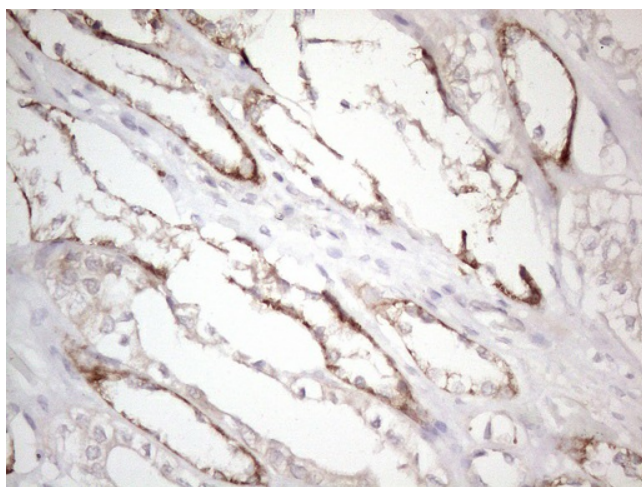
Product Type:	Primary Antibodies
Clone Name:	OTI10G10
Applications:	IHC, WB
Recommended Dilution:	WB 1:2000, IHC 1:150
Reactivity:	Human, Mouse
Host:	Mouse
Isotype:	IgG1
Clonality:	Monoclonal
Immunogen:	Full length human recombinant protein of human CTDSP2(NP_005721) produced in E.coli.
Formulation:	PBS (pH 7.3) containing 1% BSA, 50% glycerol and 0.02% sodium azide.
Concentration:	1 mg/ml
Purification:	Purified from mouse ascites fluids or tissue culture supernatant by affinity chromatography (protein A/G)
Conjugation:	Unconjugated
Storage:	Store at -20°C as received.
Stability:	Stable for 12 months from date of receipt.
Predicted Protein Size:	30.5 kDa
Gene Name:	CTD small phosphatase 2
Database Link:	NP_005721 Entrez Gene 52468 Mouse Entrez Gene 10106 Human O14595
Synonyms:	OS4; PSR2; SCP2
Protein Families:	Druggable Genome, Phosphatase



[View online »](#)

Product images:

HEK293T cells were transfected with the pCMV6-ENTRY control (Left lane) or pCMV6-ENTRY CTDSP2 ([RC209026], Right lane) cDNA for 48 hrs and lysed. Equivalent amounts of cell lysates (5 ug per lane) were separated by SDS-PAGE and immunoblotted with anti-CTDSP2 (1:2000). Positive lysates [LY417110] (100ug) and [LC417110] (20ug) can be purchased separately from OriGene.



Immunohistochemical staining of paraffin-embedded Human Kidney tissue within the normal limits using anti-CTDSP2 mouse monoclonal antibody. (Heat-induced epitope retrieval by 1mM EDTA in 10mM Tris buffer (pH8.5) at 120°C for 3min, [TA808715]) (1:150)