

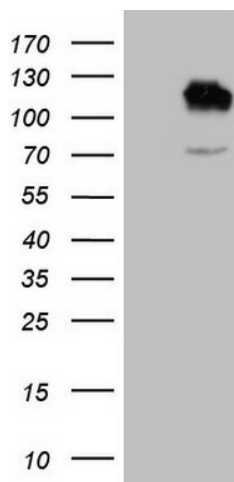
Product datasheet for TA808712M

PARG Mouse Monoclonal Antibody [Clone ID: OTI9F6]

Product data:

Product Type:	Primary Antibodies
Clone Name:	OTI9F6
Applications:	WB
Recommended Dilution:	WB 1:2000
Reactivity:	Human, Mouse, Rat
Host:	Mouse
Isotype:	IgG1
Clonality:	Monoclonal
Immunogen:	Human recombinant protein fragment corresponding to amino acids 1-367 of human PARG(NP_003622) produced in E.coli.
Formulation:	PBS (pH 7.3) containing 1% BSA, 50% glycerol and 0.02% sodium azide.
Concentration:	1 mg/ml
Purification:	Purified from mouse ascites fluids or tissue culture supernatant by affinity chromatography (protein A/G)
Conjugation:	Unconjugated
Storage:	Store at -20°C as received.
Stability:	Stable for 12 months from date of receipt.
Predicted Protein Size:	110.9 kDa
Gene Name:	poly(ADP-ribose) glycohydrolase
Database Link:	NP_003622 Entrez Gene 26430 Mouse Entrez Gene 8505 Human Q86W56
Background:	Poly(ADP-ribose) glycohydrolase (PARG) is the major enzyme responsible for the catabolism of poly(ADP-ribose), a reversible covalent-modifier of chromosomal proteins. The protein is found in many tissues and may be subject to proteolysis generating smaller, active products. [provided by RefSeq, Jul 2008]
Synonyms:	PARG99


[View online »](#)

Product images:

HEK293T cells were transfected with the pCMV6-ENTRY control (Left lane) or pCMV6-ENTRY PARG ([RC208530], Right lane) cDNA for 48 hrs and lysed. Equivalent amounts of cell lysates (5 ug per lane) were separated by SDS-PAGE and immunoblotted with anti-PARG (1:2000). Positive lysates [LY418533] (100ug) and [LC418533] (20ug) can be purchased separately from OriGene.