

## Product datasheet for **TA808706S**

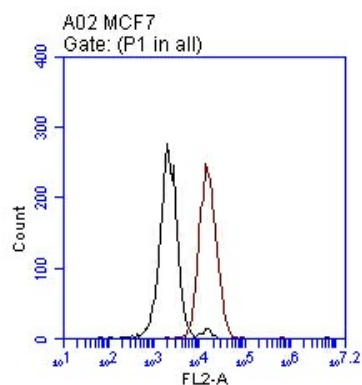
### Her2 (ERBB2) Mouse Monoclonal Antibody [Clone ID: 8F6-6]

#### Product data:

Product Type:	Primary Antibodies
Clone Name:	8F6-6
Applications:	FC
Recommended Dilution:	FC: 1:50
Reactivity:	Human, Mouse, Rat
Host:	Mouse
Isotype:	IgG1, lambda
Clonality:	Monoclonal
Immunogen:	HER2 extracellular domain (aa 23-652) expressed in HEK293 cells with a C-terminal DDK tag
Formulation:	PBS with 50% glycerol, 1% BSA and 0.02% sodium azide
Concentration:	0.5 mg/ml
Purification:	Purified from mouse ascites fluids or tissue culture supernatant by affinity chromatography (protein A/G)
Conjugation:	Unconjugated
Storage:	Store at -20°C as received.
Stability:	Stable for 12 months from date of receipt.
Gene Name:	erb-b2 receptor tyrosine kinase 2
Database Link:	<a href="#">NP_004439</a> <a href="#">Entrez Gene 13866 Mouse</a> <a href="#">Entrez Gene 24337 Rat</a> <a href="#">Entrez Gene 2064 Human</a> <a href="#">P04626</a>
Synonyms:	CD340; HER-2; HER-2/neu; HER2; MLN 19; NEU; NGL; TKR1
Protein Families:	Druggable Genome, Protein Kinase, Transmembrane
Protein Pathways:	Adherens junction, Bladder cancer, Calcium signaling pathway, Endometrial cancer, ErbB signaling pathway, Focal adhesion, Non-small cell lung cancer, Pancreatic cancer, Pathways in cancer, Prostate cancer



[View online »](#)

**Product images:**

Flow cytometric analysis of live MCF7 cells (non-fixed, non-permeabilized), using anti-HER2/ERBB2 antibody ([TA808706] at 1:50, Brown), compared to IgG1 isotype control (Black).