

## Product datasheet for **TA808692**

### HPCAL4 Mouse Monoclonal Antibody [Clone ID: OTI3F11]

#### Product data:

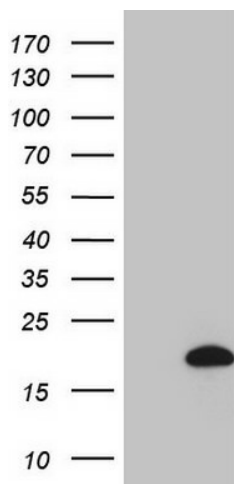
Product Type:	Primary Antibodies
Clone Name:	OTI3F11
Applications:	WB
Recommended Dilution:	WB 1:2000
Reactivity:	Human, Mouse, Rat
Host:	Mouse
Isotype:	IgG2a
Clonality:	Monoclonal
Immunogen:	Human recombinant protein fragment corresponding to amino acids 2-191 of human HPCAL4(NP_057341) produced in E.coli.
Formulation:	PBS (pH 7.3) containing 1% BSA, 50% glycerol and 0.02% sodium azide.
Concentration:	1 mg/ml
Purification:	Purified from mouse ascites fluids or tissue culture supernatant by affinity chromatography (protein A/G)
Conjugation:	Unconjugated
Storage:	Store at -20°C as received.
Stability:	Stable for 12 months from date of receipt.
Predicted Protein Size:	22 kDa
Gene Name:	hippocalcin like 4
Database Link:	<a href="#">NP_057341</a> <a href="#">Entrez Gene 51440 Human</a> <a href="#">Q9UM19</a>
Background:	The protein encoded by this gene is highly similar to human hippocalcin protein and hippocalcin like-1 protein. It also has similarity to rat neural visinin-like Ca <sup>2+</sup> -binding protein-type 1 and 2 proteins. This encoded protein may be involved in the calcium-dependent regulation of rhodopsin phosphorylation. The transcript of this gene has multiple polyadenylation sites. Alternatively spliced transcript variants encoding different isoforms have been found for this gene. [provided by RefSeq, Sep 2013]



[View online »](#)

Synonyms: HLP4

### Product images:



HEK293T cells were transfected with the pCMV6-ENTRY control (Cat# [PS100001], Left lane) or pCMV6-ENTRY HPCAL4 (Cat# [RC205253], Right lane) cDNA for 48 hrs and lysed. Equivalent amounts of cell lysates (5 ug per lane) were separated by SDS-PAGE and immunoblotted with anti-HPCAL4 (Cat# TA808692)(1:2000). Positive lysates [LY414097] (100ug) and [LC414097] (20ug) can be purchased separately from OriGene.