

## Product datasheet for **TA808691AM**

### **TAF1B Mouse Monoclonal Antibody (Biotin conjugated) [Clone ID: OTI2A12]**

#### **Product data:**

<b>Product Type:</b>	Primary Antibodies
<b>Clone Name:</b>	OTI2A12
<b>Applications:</b>	WB
<b>Recommended Dilution:</b>	WB 1:2000
<b>Reactivity:</b>	Human
<b>Host:</b>	Mouse
<b>Isotype:</b>	IgG1
<b>Clonality:</b>	Monoclonal
<b>Immunogen:</b>	Human recombinant protein fragment corresponding to amino acids 1-208 of human TAF1B(NP_005671) produced in E.coli.
<b>Formulation:</b>	PBS (pH 7.3) containing 1% BSA, 50% glycerol and 0.02% sodium azide.
<b>Concentration:</b>	0.5 mg/ml
<b>Purification:</b>	Purified from mouse ascites fluids or tissue culture supernatant by affinity chromatography (protein A/G)
<b>Conjugation:</b>	Biotin
<b>Storage:</b>	Store at -20°C as received.
<b>Stability:</b>	Stable for 12 months from date of receipt.
<b>Predicted Protein Size:</b>	68.7 kDa
<b>Gene Name:</b>	TATA-box binding protein associated factor, RNA polymerase I subunit B
<b>Database Link:</b>	<a href="#">NP_005671</a> <a href="#">Entrez Gene 9014 Human</a> <a href="#">Q53T94</a>
<b>Background:</b>	Initiation of transcription by RNA polymerase I requires the formation of a complex composed of the TATA-binding protein (TBP) and three TBP-associated factors (TAFs) specific for RNA polymerase I. This complex, known as SL1, binds to the core promoter of ribosomal RNA genes to position the polymerase properly and acts as a channel for regulatory signals. This gene encodes one of the SL1-specific TAFs. [provided by RefSeq, Jul 2008]

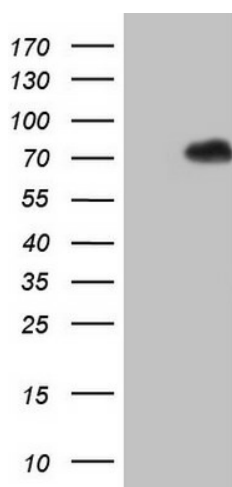


[View online »](#)

Synonyms: MGC:9349; RAF1B; RAFI63; SL1; TAFI63

Protein Families: Transcription Factors

### Product images:



HEK293T cells were transfected with the pCMV6-ENTRY control (Left lane) or pCMV6-ENTRY TAF1B ([RC202142], Right lane) cDNA for 48 hrs and lysed. Equivalent amounts of cell lysates (5 ug per lane) were separated by SDS-PAGE and immunoblotted with anti-TAF1B (1:2000). Positive lysates [LY417139] (100ug) and [LC417139] (20ug) can be purchased separately from OriGene.