

Product datasheet for **TA808670AM**

IGFBP1 Mouse Monoclonal Antibody (Biotin conjugated) [Clone ID: OTI4E12]

Product data:

Product Type:	Primary Antibodies
Clone Name:	OTI4E12
Applications:	WB
Recommended Dilution:	WB 1:2000
Reactivity:	Human
Host:	Mouse
Isotype:	IgG1
Clonality:	Monoclonal
Immunogen:	Human recombinant protein fragment corresponding to amino acids 26-259 of human IGFBP1(NP_000587) produced in E.coli.
Formulation:	PBS (pH 7.3) containing 1% BSA, 50% glycerol and 0.02% sodium azide.
Concentration:	0.5 mg/ml
Purification:	Purified from mouse ascites fluids or tissue culture supernatant by affinity chromatography (protein A/G)
Conjugation:	Biotin
Storage:	Store at -20°C as received.
Stability:	Stable for 12 months from date of receipt.
Predicted Protein Size:	25.2 kDa
Gene Name:	insulin like growth factor binding protein 1
Database Link:	NP_000587 Entrez Gene 3484 Human P08833
Background:	This gene is a member of the insulin-like growth factor binding protein (IGFBP) family and encodes a protein with an IGFBP domain and a thyroglobulin type-I domain. The protein binds both insulin-like growth factors (IGFs) I and II and circulates in the plasma. Binding of this protein prolongs the half-life of the IGFs and alters their interaction with cell surface receptors. [provided by RefSeq, Jul 2008]

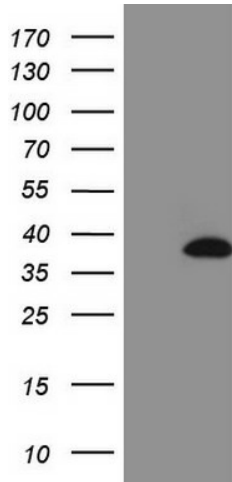


[View online »](#)

Synonyms: AFBP; hIGFBP-1; IBP1; IGF-BP25; PP12

Protein Families: Adult stem cells, Druggable Genome, Embryonic stem cells, ES Cell Differentiation/IPS, Secreted Protein

Product images:



HEK293T cells were transfected with the pCMV6-ENTRY control (Left lane) or pCMV6-ENTRY IGFBP1 ([RC209268], Right lane) cDNA for 48 hrs and lysed. Equivalent amounts of cell lysates (5 ug per lane) were separated by SDS-PAGE and immunoblotted with anti-IGFBP1 (1:2000). Positive lysates [LY400199] (100ug) and [LC400199] (20ug) can be purchased separately from OriGene.