

## Product datasheet for **TA808669**

### BTBD3 Mouse Monoclonal Antibody [Clone ID: OTI13F6]

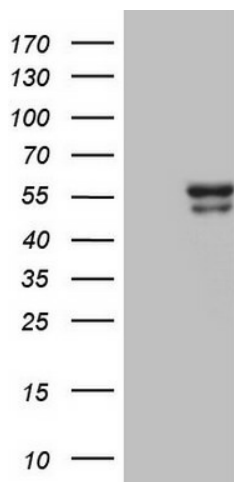
#### Product data:

Product Type:	Primary Antibodies
Clone Name:	OTI13F6
Applications:	WB
Recommended Dilution:	WB 1:2000
Reactivity:	Human, Mouse, Rat
Host:	Mouse
Isotype:	IgG1
Clonality:	Monoclonal
Immunogen:	Full length human recombinant protein of human BTBD3 (NP_852108) produced in E.coli.
Formulation:	PBS (pH 7.3) containing 1% BSA, 50% glycerol and 0.02% sodium azide.
Concentration:	1 mg/ml
Purification:	Purified from mouse ascites fluids or tissue culture supernatant by affinity chromatography (protein A/G)
Conjugation:	Unconjugated
Storage:	Store at -20°C as received.
Stability:	Stable for 12 months from date of receipt.
Predicted Protein Size:	51.3 kDa
Gene Name:	BTB domain containing 3
Database Link:	<a href="#">NP_852108</a> <a href="#">Entrez Gene 228662 Mouse</a> <a href="#">Entrez Gene 311462 Rat</a> <a href="#">Entrez Gene 22903 Human</a> <a href="#">Q9Y2F9</a>
Background:	Acts as a key regulator of dendritic field orientation during development of sensory cortex. Also directs dendrites toward active axon terminals when ectopically expressed. [UniProtKB/Swiss-Prot Function]
Synonyms:	dj742j24.1



[View online »](#)

## Product images:



HEK293T cells were transfected with the pCMV6-ENTRY control (Left lane) or pCMV6-ENTRY BTBD3 ([RC223754], Right lane) cDNA for 48 hrs and lysed. Equivalent amounts of cell lysates (5 ug per lane) were separated by SDS-PAGE and immunoblotted with anti-BTBD3 (1:2000). Positive lysates [LY405759] (100ug) and [LC405759] (20ug) can be purchased separately from OriGene.