

Product datasheet for **TA808667AM**

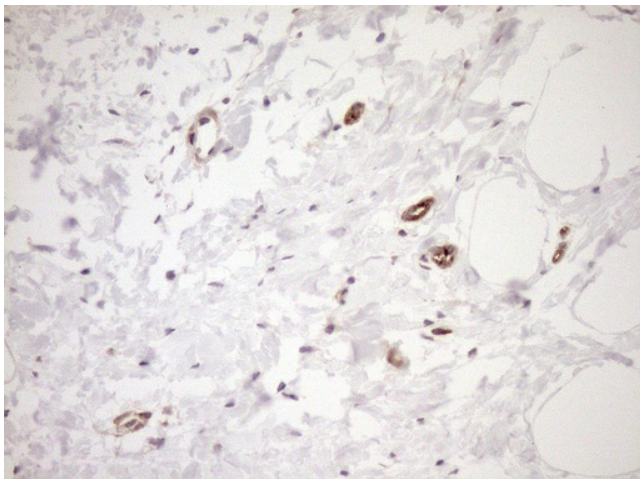
ASPDH Mouse Monoclonal Antibody (Biotin conjugated) [Clone ID: OTI4G8]

Product data:

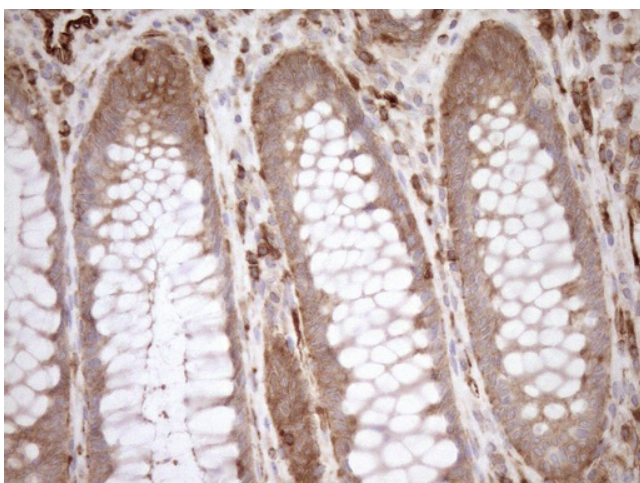
Product Type:	Primary Antibodies
Clone Name:	OTI4G8
Applications:	IHC
Recommended Dilution:	IHC 1:150
Reactivity:	Human, Mouse, Rat
Host:	Mouse
Isotype:	IgG1
Clonality:	Monoclonal
Immunogen:	Full length human recombinant protein of human ASPDH (NP_001019827) produced in E.coli.
Formulation:	PBS (pH 7.3) containing 1% BSA, 50% glycerol and 0.02% sodium azide.
Concentration:	0.5 mg/ml
Purification:	Purified from mouse ascites fluids or tissue culture supernatant by affinity chromatography (protein A/G)
Conjugation:	Biotin
Storage:	Store at -20°C as received.
Stability:	Stable for 12 months from date of receipt.
Predicted Protein Size:	18.5 kDa
Gene Name:	aspartate dehydrogenase domain containing
Database Link:	NP_001019827 Entrez Gene 554235 Human A6ND91
Background:	Specifically catalyzes the NAD or NADP-dependent dehydrogenation of L-aspartate to iminoaspartate. [UniProtKB/Swiss-Prot Function]
Synonyms:	aspartate dehydrogenase; aspartate dehydrogenase domain containing



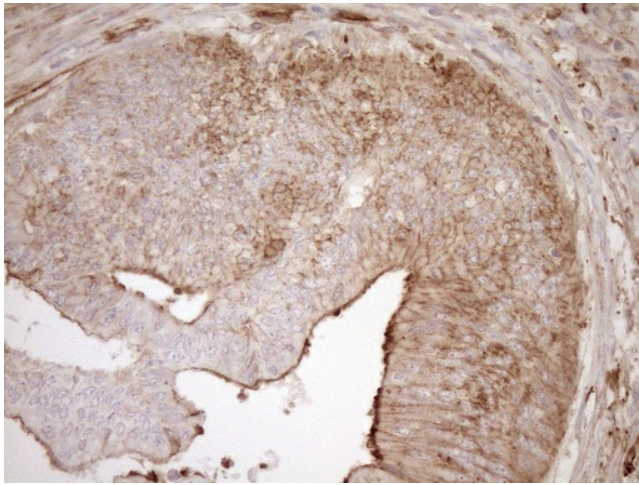
[View online »](#)

Product images:

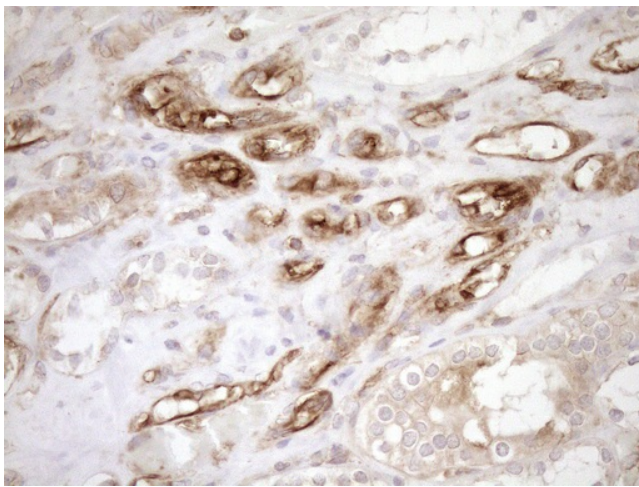
Immunohistochemical staining of paraffin-embedded Adenocarcinoma of Human breast tissue using anti-ASPDH mouse monoclonal antibody. (Heat-induced epitope retrieval by 1mM EDTA in 10mM Tris buffer (pH8.5) at 120°C for 3min, [TA808667]) (1:150)



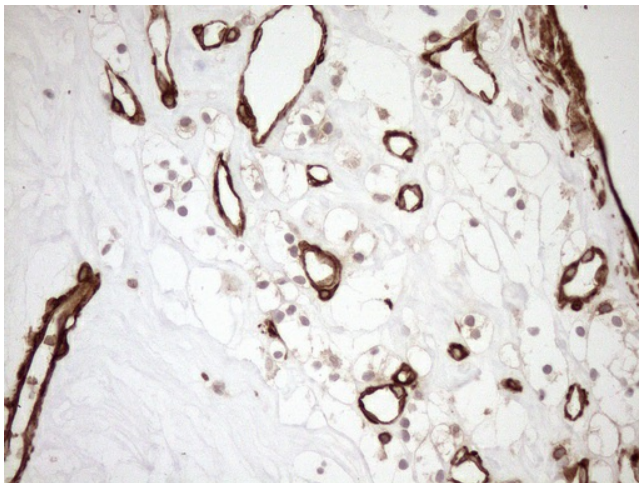
Immunohistochemical staining of paraffin-embedded Human colon tissue within the normal limits using anti-ASPDH mouse monoclonal antibody. (Heat-induced epitope retrieval by 1mM EDTA in 10mM Tris buffer (pH8.5) at 120°C for 3min, [TA808667]) (1:150)



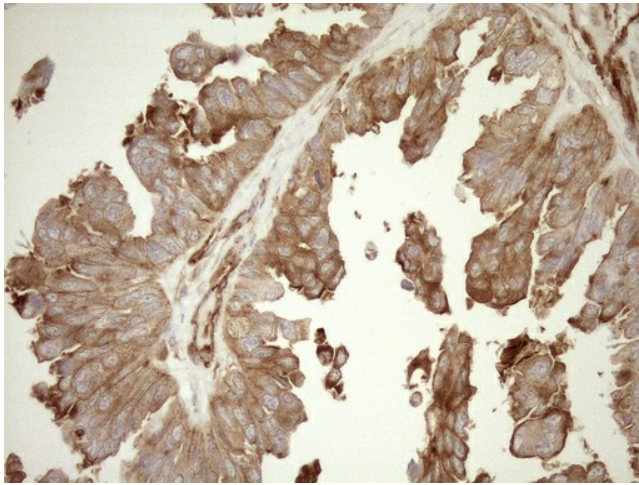
Immunohistochemical staining of paraffin-embedded Adenocarcinoma of Human colon tissue using anti-ASPDH mouse monoclonal antibody. (Heat-induced epitope retrieval by 1mM EDTA in 10mM Tris buffer (pH8.5) at 120°C for 3min, [TA808667]) (1:150)



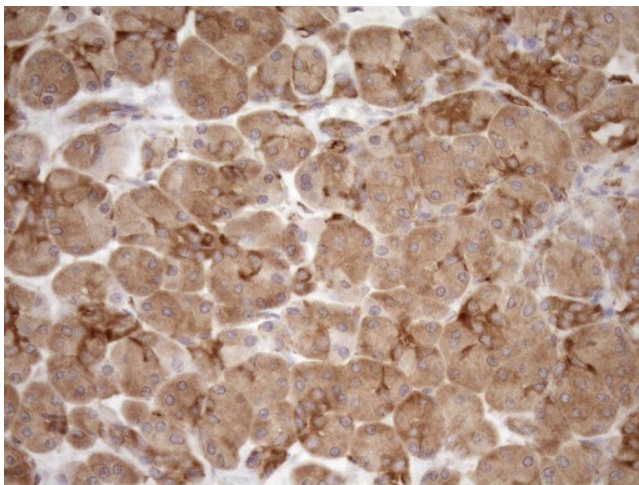
Immunohistochemical staining of paraffin-embedded Human Kidney tissue within the normal limits using anti-ASPDH mouse monoclonal antibody. (Heat-induced epitope retrieval by 1mM EDTA in 10mM Tris buffer (pH8.5) at 120°C for 3min, [TA808667]) (1:150)



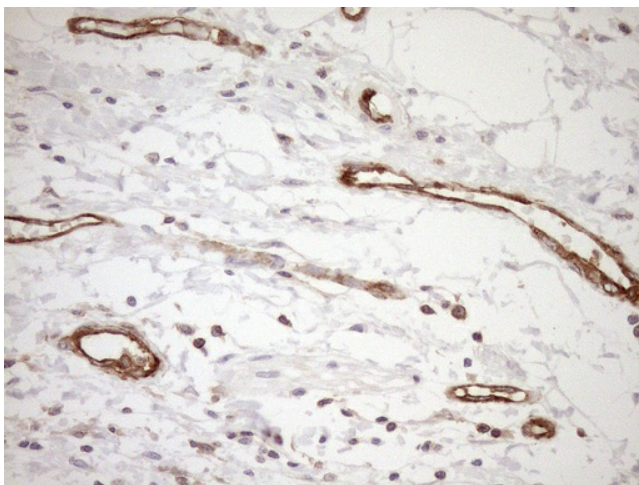
Immunohistochemical staining of paraffin-embedded Carcinoma of Human kidney tissue using anti-ASPDH mouse monoclonal antibody. (Heat-induced epitope retrieval by 1mM EDTA in 10mM Tris buffer (pH8.5) at 120°C for 3min, [TA808667]) (1:150)



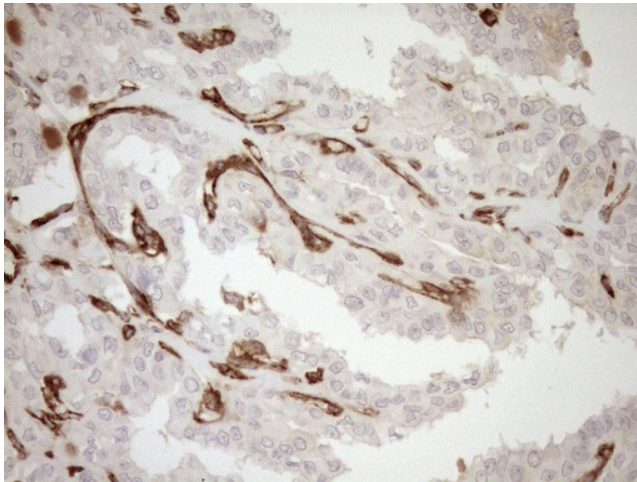
Immunohistochemical staining of paraffin-embedded Adenocarcinoma of Human ovary tissue using anti-ASPDH mouse monoclonal antibody. (Heat-induced epitope retrieval by 1mM EDTA in 10mM Tris buffer (pH8.5) at 120°C for 3min, [TA808667]) (1:150)



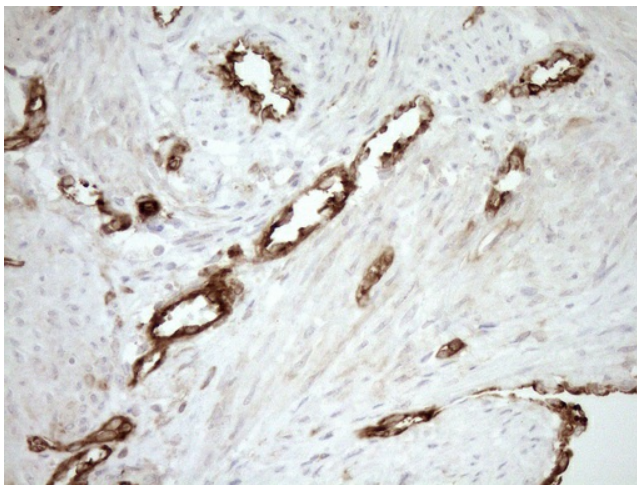
Immunohistochemical staining of paraffin-embedded Human pancreas tissue within the normal limits using anti-ASPDH mouse monoclonal antibody. (Heat-induced epitope retrieval by 1mM EDTA in 10mM Tris buffer (pH8.5) at 120°C for 3min, [TA808667]) (1:150)



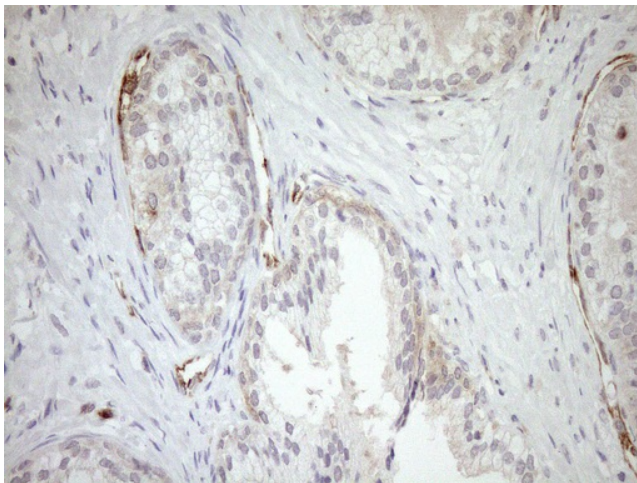
Immunohistochemical staining of paraffin-embedded Carcinoma of Human pancreas tissue using anti-ASPDH mouse monoclonal antibody. (Heat-induced epitope retrieval by 1mM EDTA in 10mM Tris buffer (pH8.5) at 120°C for 3min, [TA808667]) (1:150)



Immunohistochemical staining of paraffin-embedded Carcinoma of Human thyroid tissue using anti-ASPDH mouse monoclonal antibody. (Heat-induced epitope retrieval by 1mM EDTA in 10mM Tris buffer (pH8.5) at 120°C for 3min, [TA808667]) (1:150)



Immunohistochemical staining of paraffin-embedded Human endometrium tissue within the normal limits using anti-ASPDH mouse monoclonal antibody. (Heat-induced epitope retrieval by 1mM EDTA in 10mM Tris buffer (pH8.5) at 120°C for 3min, [TA808667]) (1:150)



Immunohistochemical staining of paraffin-embedded Human prostate tissue within the normal limits using anti-ASPDH mouse monoclonal antibody. (Heat-induced epitope retrieval by 1mM EDTA in 10mM Tris buffer (pH8.5) at 120°C for 3min, [TA808667]) (1:150)