

## Product datasheet for **TA808660BM**

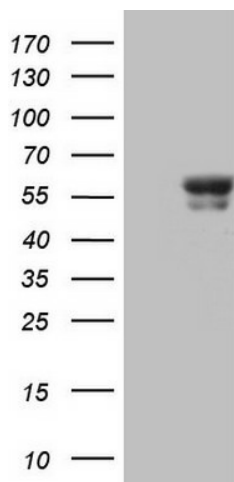
### **BTBD3 Mouse Monoclonal Antibody (HRP conjugated) [Clone ID: OTI1A10]**

#### **Product data:**

Product Type:	Primary Antibodies
Clone Name:	OTI1A10
Applications:	WB
Recommended Dilution:	WB 1:2000
Reactivity:	Human, Mouse, Rat
Host:	Mouse
Isotype:	IgG1
Clonality:	Monoclonal
Immunogen:	Full length human recombinant protein of human BTBD3 (NP_852108) produced in E.coli.
Formulation:	PBS (pH 7.3) containing 1% BSA, 50% glycerol.
Concentration:	0.5 mg/ml
Purification:	Purified from mouse ascites fluids or tissue culture supernatant by affinity chromatography (protein A/G)
Conjugation:	HRP
Storage:	Store at -20°C as received.
Stability:	Stable for 12 months from date of receipt.
Gene Name:	BTB domain containing 3
Database Link:	<a href="#">NP_852108</a> <a href="#">Entrez Gene 228662 Mouse</a> <a href="#">Entrez Gene 311462 Rat</a> <a href="#">Entrez Gene 22903 Human</a> <a href="#">Q9Y2F9</a>
Background:	Acts as a key regulator of dendritic field orientation during development of sensory cortex. Also directs dendrites toward active axon terminals when ectopically expressed. [UniProtKB/Swiss-Prot Function]
Synonyms:	dj742j24.1


[View online »](#)

## Product images:



HEK293T cells were transfected with the pCMV6-ENTRY control (Cat# [PS100001], Left lane) or pCMV6-ENTRY BTBD3 (Cat# [RC223754], Right lane) cDNA for 48 hrs and lysed. Equivalent amounts of cell lysates (5 ug per lane) were separated by SDS-PAGE and immunoblotted with anti-BTBD3 (Cat# [TA808660])(1:2000). Positive lysates [LY405759] (100ug) and [LC405759] (20ug) can be purchased separately from OriGene.