

## Product datasheet for **TA808640AM**

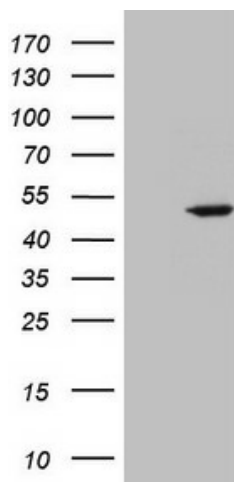
### STOML2 Mouse Monoclonal Antibody (Biotin conjugated) [Clone ID: OTI1A1]

#### Product data:

Product Type:	Primary Antibodies
Clone Name:	OTI1A1
Applications:	WB
Recommended Dilution:	WB 1:500
Reactivity:	Human, Mouse, Rat
Host:	Mouse
Isotype:	IgG2b
Clonality:	Monoclonal
Immunogen:	Full length human recombinant protein of human STOML2 (NP_038470) produced in E.coli.
Formulation:	PBS (pH 7.3) containing 1% BSA, 50% glycerol and 0.02% sodium azide.
Concentration:	0.5 mg/ml
Purification:	Purified from mouse ascites fluids or tissue culture supernatant by affinity chromatography (protein A/G)
Conjugation:	Biotin
Storage:	Store at -20°C as received.
Stability:	Stable for 12 months from date of receipt.
Predicted Protein Size:	38.4 kDa
Gene Name:	stomatin like 2
Database Link:	<a href="#">NP_038470</a> <a href="#">Entrez Gene 30968 Human</a> <a href="#">Q9UJZ1</a>
Synonyms:	HSPC108; SLP-2
Protein Families:	Druggable Genome



[View online »](#)

**Product images:**

HEK293T cells were transfected with the pCMV6-ENTRY control (Left lane) or pCMV6-ENTRY STOML2 ([RC204046], Right lane) cDNA for 48 hrs and lysed. Equivalent amounts of cell lysates (5 ug per lane) were separated by SDS-PAGE and immunoblotted with anti-STOML2 (1:500). Positive lysates [LY415542] (100ug) and [LC415542] (20ug) can be purchased separately from OriGene.