

Product datasheet for **TA808639**

Estrogen Related Receptor alpha (ESRR) Mouse Monoclonal Antibody [Clone ID: OTI2C10]

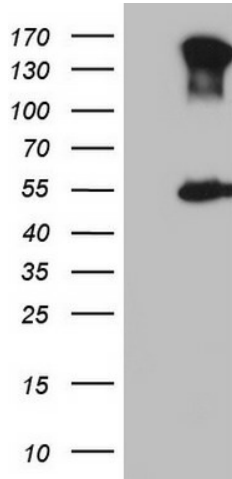
Product data:

Product Type:	Primary Antibodies
Clone Name:	OTI2C10
Applications:	WB
Recommended Dilution:	WB 1:2000
Reactivity:	Human
Host:	Mouse
Isotype:	IgG1
Clonality:	Monoclonal
Immunogen:	Human recombinant protein fragment corresponding to amino acids 1-205 of human ESRR(NP_004442) produced in E.coli.
Formulation:	PBS (pH 7.3) containing 1% BSA, 50% glycerol and 0.02% sodium azide.
Concentration:	1 mg/ml
Purification:	Purified from mouse ascites fluids or tissue culture supernatant by affinity chromatography (protein A/G)
Conjugation:	Unconjugated
Storage:	Store at -20°C as received.
Stability:	Stable for 12 months from date of receipt.
Predicted Protein Size:	46 kDa
Gene Name:	estrogen related receptor alpha
Database Link:	NP_004442 Entrez Gene 2101 Human P11474
Synonyms:	ERR1; ERRa; ERRalpha; ESRL1; NR3B1
Protein Families:	Druggable Genome, Nuclear Hormone Receptor, Transcription Factors



[View online »](#)

Product images:



HEK293T cells were transfected with the pCMV6-ENTRY control (Left lane) or pCMV6-ENTRY ESRRA ([RC209028], Right lane) cDNA for 48 hrs and lysed. Equivalent amounts of cell lysates (5 ug per lane) were separated by SDS-PAGE and immunoblotted with anti-ESRRA (1:2000). Positive lysates [LY417978] (100ug) and [LC417978] (20ug) can be purchased separately from OriGene.