

Product datasheet for **TA808636M**

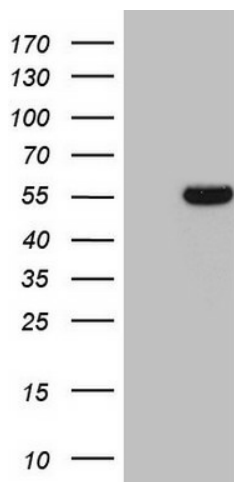
Estrogen Related Receptor alpha (ESRR) Mouse Monoclonal Antibody [Clone ID: OTI3E3]

Product data:

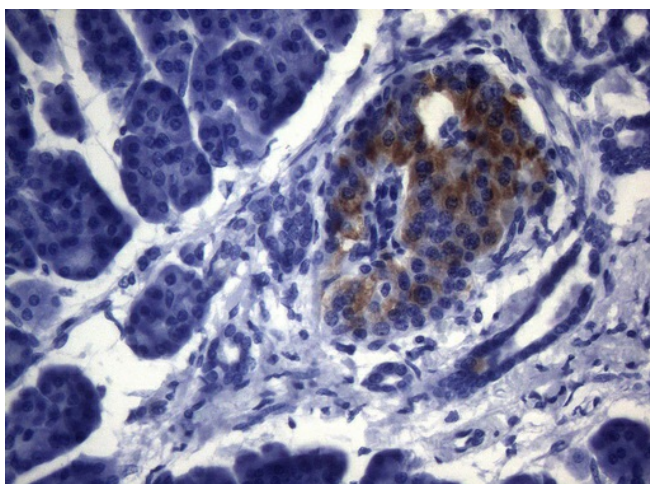
Product Type:	Primary Antibodies
Clone Name:	OTI3E3
Applications:	IHC, WB
Recommended Dilution:	WB 1:2000, IHC 1:150
Reactivity:	Human
Host:	Mouse
Isotype:	IgG2b
Clonality:	Monoclonal
Immunogen:	Human recombinant protein fragment corresponding to amino acids 1-205 of human ESRR(NP_004442) produced in E.coli.
Formulation:	PBS (pH 7.3) containing 1% BSA, 50% glycerol and 0.02% sodium azide.
Concentration:	1 mg/ml
Purification:	Purified from mouse ascites fluids or tissue culture supernatant by affinity chromatography (protein A/G)
Conjugation:	Unconjugated
Storage:	Store at -20°C as received.
Stability:	Stable for 12 months from date of receipt.
Gene Name:	estrogen related receptor alpha
Database Link:	NP_004442 Entrez Gene 2101 Human P11474
Synonyms:	ERR1; ERRa; ERRalpha; ESRL1; NR3B1
Protein Families:	Druggable Genome, Nuclear Hormone Receptor, Transcription Factors

[View online »](#)

Product images:



HEK293T cells were transfected with the pCMV6-ENTRY control (Left lane) or pCMV6-ENTRY ESRRA ([RC209028], Right lane) cDNA for 48 hrs and lysed. Equivalent amounts of cell lysates (5 ug per lane) were separated by SDS-PAGE and immunoblotted with anti-ESRRA (1:2000). Positive lysates [LY417978] (100ug) and [LC417978] (20ug) can be purchased separately from OriGene.



Immunohistochemical staining of paraffin-embedded Human pancreas tissue within the normal limits using anti-ESRRA mouse monoclonal antibody. Heat-induced epitope retrieval by EDTA solution buffer pH 8.0 at 120°C for 3 min.