

## Product datasheet for **TA808616AM**

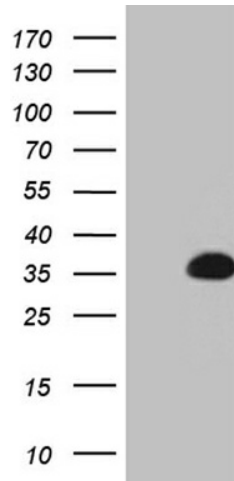
### **C7orf36 (YAE1D1) Mouse Monoclonal Antibody (Biotin conjugated) [Clone ID: OTI1E7]**

#### **Product data:**

Product Type:	Primary Antibodies
Clone Name:	OTI1E7
Applications:	WB
Recommended Dilution:	WB 1:500
Reactivity:	Human
Host:	Mouse
Isotype:	IgG2a
Clonality:	Monoclonal
Immunogen:	Full length human recombinant protein of human YAE1D1(NP_064577) produced in E.coli.
Formulation:	PBS (pH 7.3) containing 1% BSA, 50% glycerol and 0.02% sodium azide.
Concentration:	0.5 mg/ml
Purification:	Purified from mouse ascites fluids or tissue culture supernatant by affinity chromatography (protein A/G)
Conjugation:	Biotin
Storage:	Store at -20°C as received.
Stability:	Stable for 12 months from date of receipt.
Predicted Protein Size:	25.1 kDa
Gene Name:	Yae1 domain containing 1
Database Link:	<a href="#">NP_064577</a> <a href="#">Entrez Gene 57002 Human</a> <a href="#">Q9NRH1</a>
Background:	YAE1D1 (Yae1 domain containing 1) is a protein-coding gene.
Synonyms:	C7orf36; GK003

[View online »](#)

## Product images:



HEK293T cells were transfected with the pCMV6-ENTRY control (Cat# [PS100001], Left lane) or pCMV6-ENTRY YAE1D1 (Cat# [RC205608], Right lane) cDNA for 48 hrs and lysed. Equivalent amounts of cell lysates (5 ug per lane) were separated by SDS-PAGE and immunoblotted with anti-YAE1D1 (Cat# [TA808616])(1:500). Positive lysates [LY412614] (100ug) and [LC412614] (20ug) can be purchased separately from OriGene.