

## Product datasheet for **TA808613BM**

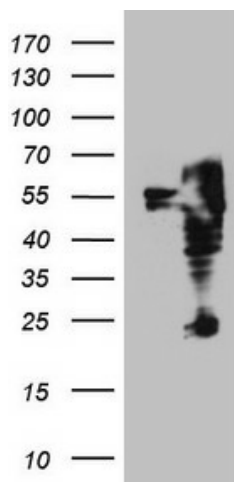
### ITPK1 Mouse Monoclonal Antibody (HRP conjugated) [Clone ID: OT11F5]

#### Product data:

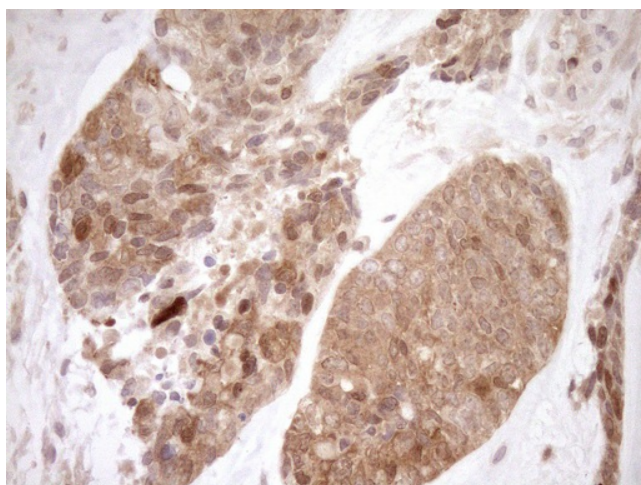
Product Type:	Primary Antibodies
Clone Name:	OT11F5
Applications:	IHC, WB
Recommended Dilution:	WB 1:2000, IHC 1:150
Reactivity:	Human, Mouse, Rat
Host:	Mouse
Isotype:	IgG1
Clonality:	Monoclonal
Immunogen:	Human recombinant protein fragment corresponding to amino acids 309-391 of human ITPK1(NP_001136065) produced in E.coli.
Formulation:	PBS (pH 7.3) containing 1% BSA, 50% glycerol.
Concentration:	0.5 mg/ml
Purification:	Purified from mouse ascites fluids or tissue culture supernatant by affinity chromatography (protein A/G)
Conjugation:	HRP
Storage:	Store at -20°C as received.
Stability:	Stable for 12 months from date of receipt.
Predicted Protein Size:	45.4 kDa
Gene Name:	inositol-tetrakisphosphate 1-kinase
Database Link:	<a href="#">NP_001136065</a> <a href="#">Entrez Gene 217837 Mouse</a> <a href="#">Entrez Gene 500709 Rat</a> <a href="#">Entrez Gene 3705 Human</a> <a href="#">Q13572</a>
Synonyms:	ITRPK1
Protein Families:	Druggable Genome
Protein Pathways:	Inositol phosphate metabolism, Metabolic pathways, Phosphatidylinositol signaling system



[View online »](#)

**Product images:**

HEK293T cells were transfected with the pCMV6-ENTRY control (Cat# [PS100001], Left lane) or pCMV6-ENTRY ITPK1 (Cat# [RC227205], Right lane) cDNA for 48 hrs and lysed. Equivalent amounts of cell lysates (5 ug per lane) were separated by SDS-PAGE and immunoblotted with anti-ITPK1 (1:2000) (Cat# [TA808613]). Positive lysates [LY428194] (100ug) and [LC428194] (20ug) can be purchased separately from OriGene.



Immunohistochemical staining of paraffin-embedded Adenocarcinoma of Human endometrium tissue using anti-ITPK1 mouse monoclonal antibody. (Heat-induced epitope retrieval by 1mM EDTA in 10mM Tris buffer (pH8.5) at 120°C for 3min, [TA808613]) (1:150)