

Product datasheet for **TA808605BM**

VAMP5 Mouse Monoclonal Antibody (HRP conjugated) [Clone ID: OTI7F2]

Product data:

Product Type:	Primary Antibodies
Clone Name:	OTI7F2
Applications:	IHC, WB
Recommended Dilution:	WB 1:500, IHC 1:500
Reactivity:	Human
Host:	Mouse
Isotype:	IgG1
Clonality:	Monoclonal
Immunogen:	Full length human recombinant protein of human VAMP5 (NP_006625) produced in E.coli.
Formulation:	PBS (pH 7.3) containing 1% BSA, 50% glycerol.
Concentration:	0.5 mg/ml
Purification:	Purified from mouse ascites fluids or tissue culture supernatant by affinity chromatography (protein A/G)
Conjugation:	HRP
Storage:	Store at -20°C as received.
Stability:	Stable for 12 months from date of receipt.
Predicted Protein Size:	12.6 kDa
Gene Name:	vesicle associated membrane protein 5
Database Link:	NP_006625 Entrez Gene 10791 Human O95183
Background:	Synaptobrevins/VAMPs, syntaxins, and the 25-kD synaptosomal-associated protein are the main components of a protein complex involved in the docking and/or fusion of vesicles and cell membranes. The VAMP5 gene is a member of the vesicle-associated membrane protein (VAMP)/synaptobrevin family and the SNARE superfamily. This VAMP family member may participate in vesicle trafficking events that are associated with myogenesis. [provided by RefSeq, Jul 2008]



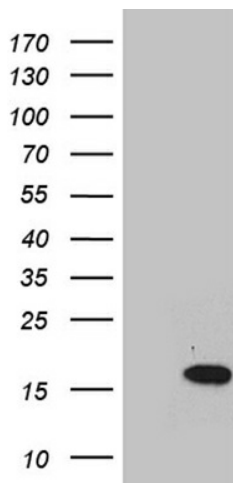
[View online »](#)

Synonyms: MYOBREVIN; myobrevin; vesicle-associated membrane protein 5; vesicle-associated membrane protein 5 (myobrevin)

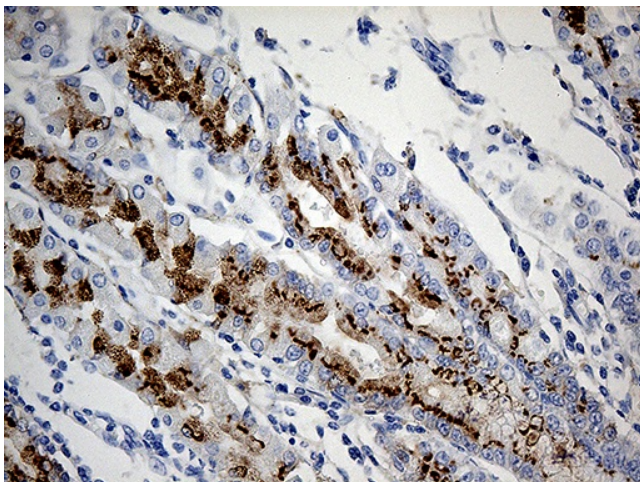
Protein Families: Transmembrane

Protein Pathways: SNARE interactions in vesicular transport

Product images:



HEK293T cells were transfected with the pCMV6-ENTRY control (Cat# [PS100001], Left lane) or pCMV6-ENTRY VAMP5 (Cat# [RC204973], Right lane) cDNA for 48 hrs and lysed. Equivalent amounts of cell lysates (5 ug per lane) were separated by SDS-PAGE and immunoblotted with anti-VAMP5 (Cat# [TA808605]). Positive lysates [LY416522] (100ug) and [LC416522] (20ug) can be purchased separately from OriGene.



Immunohistochemical staining of paraffin-embedded Human gastric tissue within the normal limits using anti-VAMP5 mouse monoclonal antibody. (Heat-induced epitope retrieval by 1mM EDTA in 10mM Tris buffer (pH8.5) at 120°C for 3min, [TA808605]) (1:500)