

## Product datasheet for **TA808604BM**

### FOXO4 Mouse Monoclonal Antibody (HRP conjugated) [Clone ID: OTI10F12]

#### Product data:

Product Type:	Primary Antibodies
Clone Name:	OTI10F12
Applications:	WB
Recommended Dilution:	WB 1:2000
Reactivity:	Human, Mouse, Rat
Host:	Mouse
Isotype:	IgG1
Clonality:	Monoclonal
Immunogen:	Human recombinant protein fragment corresponding to amino acids 206-505 of human FOXO4 (NP_005929) produced in E.coli.
Formulation:	PBS (pH 7.3) containing 1% BSA, 50% glycerol.
Concentration:	0.5 mg/ml
Purification:	Purified from mouse ascites fluids or tissue culture supernatant by affinity chromatography (protein A/G)
Conjugation:	HRP
Storage:	Store at -20°C as received.
Stability:	Stable for 12 months from date of receipt.
Predicted Protein Size:	53.5 kDa
Gene Name:	forkhead box O4
Database Link:	<a href="#">NP_005929</a> <a href="#">Entrez Gene 54601 Mouse</a> <a href="#">Entrez Gene 302415 Rat</a> <a href="#">Entrez Gene 4303 Human</a> <a href="#">P98177</a>



[View online »](#)

**Background:**

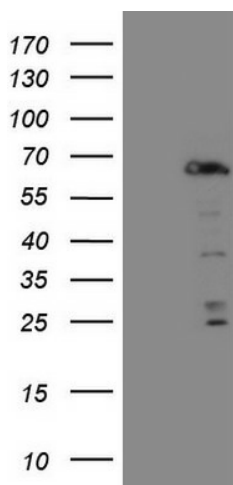
This gene encodes a member of the O class of winged helix/forkhead transcription factor family. Proteins encoded by this class are regulated by factors involved in growth and differentiation indicating they play a role in these processes. A translocation involving this gene on chromosome X and the homolog of the Drosophila trithorax gene, encoding a DNA binding protein, located on chromosome 11 is associated with leukemia. Multiple transcript variants encoding different isoforms have been found for this gene. [provided by RefSeq, Jan 2010]

**Synonyms:**

AFX; AFX1; MLLT7

**Protein Families:**

Transcription Factors

**Product images:**

HEK293T cells were transfected with the pCMV6-ENTRY control (Left lane) or pCMV6-ENTRY FOXO4 ([RC213185], Right lane) cDNA for 48 hrs and lysed. Equivalent amounts of cell lysates (5 ug per lane) were separated by SDS-PAGE and immunoblotted with anti-FOXO4 (1:2000). Positive lysates [LY401798] (100ug) and [LC401798] (20ug) can be purchased separately from OriGene.