

Product datasheet for **TA808594AM**

ICOS Ligand (ICOSLG) Mouse Monoclonal Antibody (Biotin conjugated) [Clone ID: OTI2G10]

Product data:

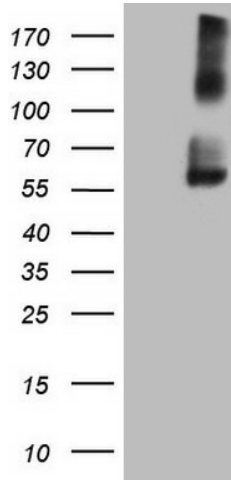
Product Type:	Primary Antibodies
Clone Name:	OTI2G10
Applications:	IHC, WB
Recommended Dilution:	WB 1:2000, IHC 1:150
Reactivity:	Human
Host:	Mouse
Isotype:	IgG1
Clonality:	Monoclonal
Immunogen:	Full length human recombinant protein of human ICOSLG (NP_056074) produced in HEK293T cell.
Formulation:	PBS (pH 7.3) containing 1% BSA, 50% glycerol and 0.02% sodium azide.
Concentration:	0.5 mg/ml
Purification:	Purified from mouse ascites fluids or tissue culture supernatant by affinity chromatography (protein A/G)
Conjugation:	Biotin
Storage:	Store at -20°C as received.
Stability:	Stable for 12 months from date of receipt.
Predicted Protein Size:	33.2 kDa
Gene Name:	inducible T-cell costimulator ligand
Database Link:	NP_056074 Entrez Gene 23308 Human O75144
Background:	Ligand for the T-cell-specific cell surface receptor ICOS. Acts as a costimulatory signal for T-cell proliferation and cytokine secretion; induces also B-cell proliferation and differentiation into plasma cells. Could play an important role in mediating local tissue responses to inflammatory conditions, as well as in modulating the secondary immune response by co-stimulating memory T-cell function. [UniProtKB/Swiss-Prot Function]



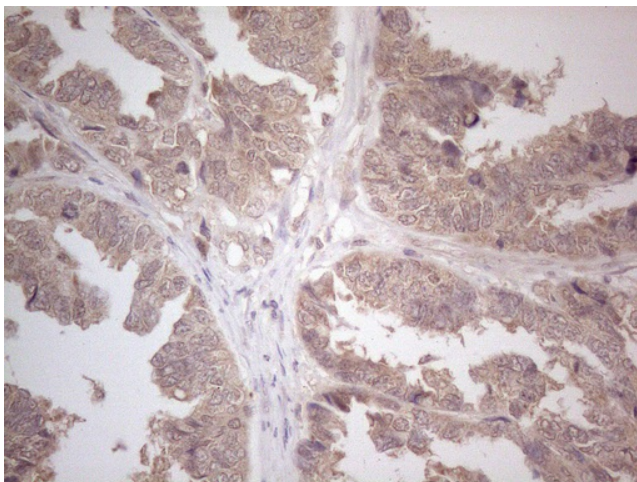
[View online »](#)

Synonyms: B7-H2; B7H2; B7RP-1; B7RP1; CD275; GL50; ICOS-L; ICOSL; LICOS
Protein Families: Transmembrane
Protein Pathways: Cell adhesion molecules (CAMs)

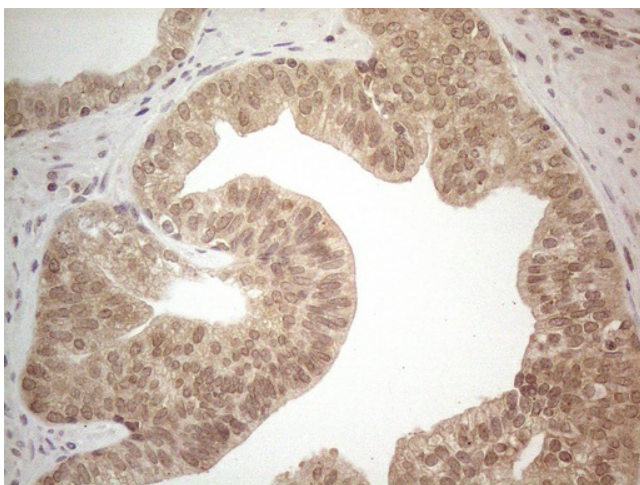
Product images:



HEK293T cells were transfected with the pCMV6-ENTRY control (Left lane) or pCMV6-ENTRY ICOSLG ([RC208975], Right lane) cDNA for 48 hrs and lysed. Equivalent amounts of cell lysates (5 ug per lane) were separated by SDS-PAGE and immunoblotted with anti-ICOSLG (1:2000). Positive lysates [LY402420] (100ug) and [LC402420] (20ug) can be purchased separately from OriGene.



Immunohistochemical staining of paraffin-embedded Adenocarcinoma of Human ovary tissue using anti-ICOSLG mouse monoclonal antibody. (Heat-induced epitope retrieval by 1mM EDTA in 10mM Tris buffer (pH8.5) at 120°C for 3min, [TA808594]) (1:150)



Immunohistochemical staining of paraffin-embedded Carcinoma of Human prostate tissue using anti-ICOSLG mouse monoclonal antibody. (Heat-induced epitope retrieval by 1mM EDTA in 10mM Tris buffer (pH8.5) at 120°C for 3min, [TA808594]) (1:150)