

Product datasheet for **TA808593AM**

FOXO4 Mouse Monoclonal Antibody (Biotin conjugated) [Clone ID: OT18A8]

Product data:

Product Type:	Primary Antibodies
Clone Name:	OT18A8
Applications:	IHC, WB
Recommended Dilution:	WB 1:2000, IHC 1:150
Reactivity:	Human, Mouse, Rat
Host:	Mouse
Isotype:	IgG1
Clonality:	Monoclonal
Immunogen:	Human recombinant protein fragment corresponding to amino acids 206-505 of human FOXO4 (NP_005929) produced in E.coli.
Formulation:	PBS (pH 7.3) containing 1% BSA, 50% glycerol and 0.02% sodium azide.
Concentration:	0.5 mg/ml
Purification:	Purified from mouse ascites fluids or tissue culture supernatant by affinity chromatography (protein A/G)
Conjugation:	Biotin
Storage:	Store at -20°C as received.
Stability:	Stable for 12 months from date of receipt.
Predicted Protein Size:	53.5 kDa
Gene Name:	forkhead box O4
Database Link:	NP_005929 Entrez Gene 54601 Mouse Entrez Gene 302415 Rat Entrez Gene 4303 Human P98177



[View online »](#)

Background:

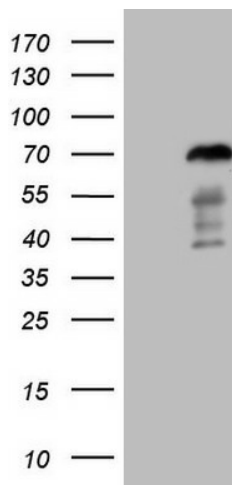
This gene encodes a member of the O class of winged helix/forkhead transcription factor family. Proteins encoded by this class are regulated by factors involved in growth and differentiation indicating they play a role in these processes. A translocation involving this gene on chromosome X and the homolog of the Drosophila trithorax gene, encoding a DNA binding protein, located on chromosome 11 is associated with leukemia. Multiple transcript variants encoding different isoforms have been found for this gene. [provided by RefSeq, Jan 2010]

Synonyms:

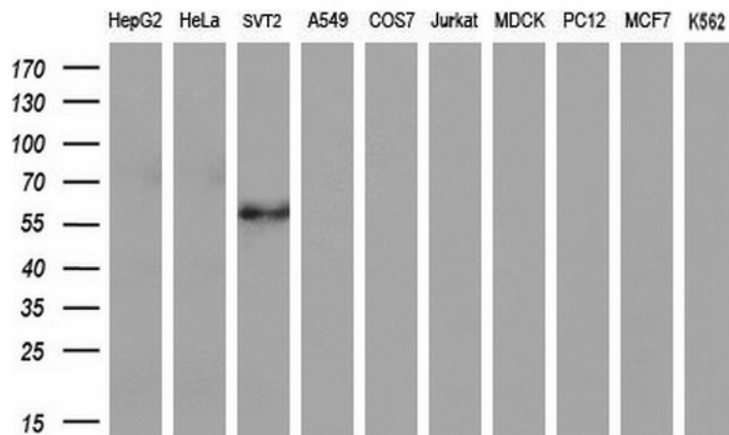
AFX; AFX1; MLLT7

Protein Families:

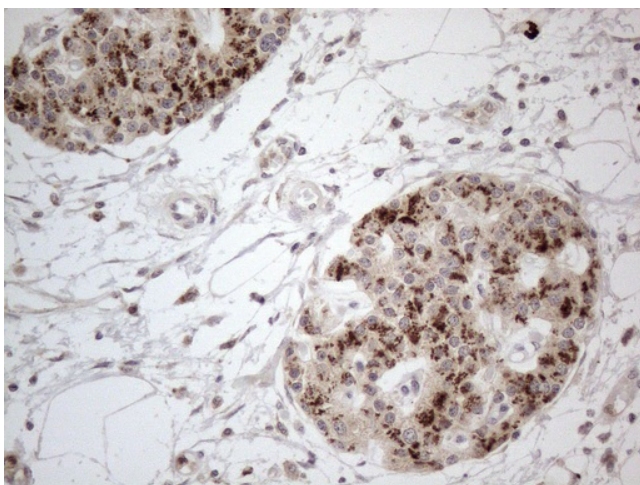
Transcription Factors

Product images:


HEK293T cells were transfected with the pCMV6-ENTRY control (Left lane) or pCMV6-ENTRY FOXO4 ([RC213185], Right lane) cDNA for 48 hrs and lysed. Equivalent amounts of cell lysates (5 ug per lane) were separated by SDS-PAGE and immunoblotted with anti-FOXO4 (1:2000). Positive lysates [LY401798] (100ug) and [LC401798] (20ug) can be purchased separately from OriGene.



Western blot analysis of extracts (10ug) from 10 different cell lines by using anti-FOXO4 monoclonal antibody (1:200).



Immunohistochemical staining of paraffin-embedded Carcinoma of Human pancreas tissue using anti-FOXO4 mouse monoclonal antibody. (Heat-induced epitope retrieval by 1mM EDTA in 10mM Tris buffer (pH8.5) at 120°C for 3min, [TA808593]) (1:150)