

Product datasheet for **TA808591**

EXOSC1 Mouse Monoclonal Antibody [Clone ID: OTI4C7]

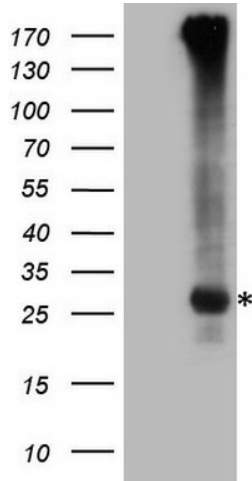
Product data:

Product Type:	Primary Antibodies
Clone Name:	OTI4C7
Applications:	IHC, WB
Recommended Dilution:	WB 1:2000, IHC 1:150
Reactivity:	Human, Mouse, Rat
Host:	Mouse
Isotype:	IgG1
Clonality:	Monoclonal
Immunogen:	Full length human recombinant protein of human EXOSC1 (NP_057130) produced in E.coli.
Formulation:	PBS (PH 7.3) containing 1% BSA, 50% glycerol and 0.02% sodium azide.
Concentration:	1 mg/ml
Purification:	Purified from mouse ascites fluids or tissue culture supernatant by affinity chromatography (protein A/G)
Storage:	Store at -20°C as received.
Stability:	Stable for 12 months from date of receipt.
Predicted Protein Size:	21.3 kDa
Gene Name:	exosome component 1
Database Link:	NP_057130 Entrez Gene 51013 Human
Background:	This gene encodes a core component of the exosome. The mammalian exosome is required for rapid degradation of AU rich element-containing RNAs but not for poly(A) shortening. The association of this protein with the exosome is mediated by protein-protein interactions with ribosomal RNA-processing protein 42 and ribosomal RNA-processing protein 46. [provided by RefSeq, Jul 2008]
Synonyms:	CGI-108; CSL4; Csl4p; hCsl4p; p13; SKI4; Ski4p
Protein Pathways:	RNA degradation

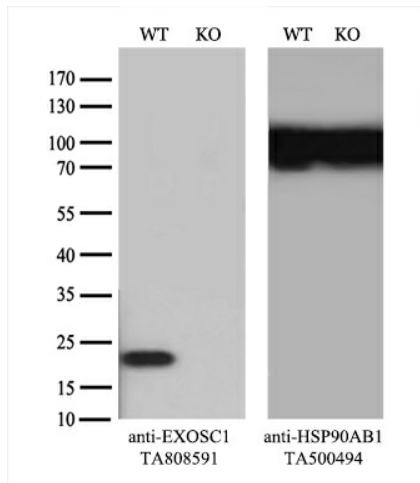


[View online »](#)

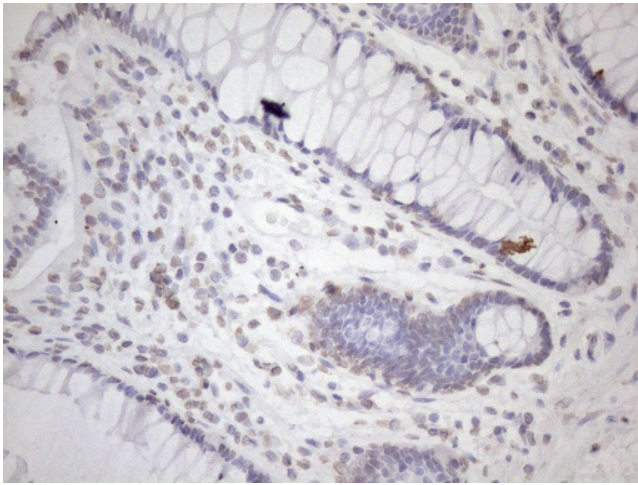
Product images:



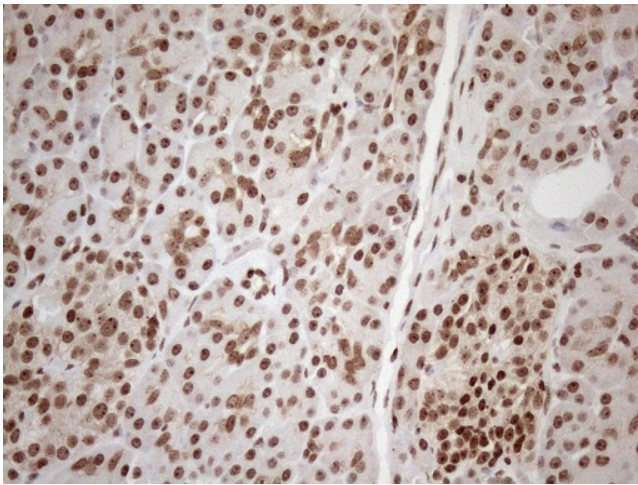
HEK293T cells were transfected with the pCMV6-ENTRY control (Left lane) or pCMV6-ENTRY EXOSC1 ([RC206007], Right lane) cDNA for 48 hrs and lysed. Equivalent amounts of cell lysates (5 ug per lane) were separated by SDS-PAGE and immunoblotted with anti-EXOSC1 (1:2000). Positive lysates [LY414227] (100ug) and [LC414227] (20ug) can be purchased separately from OriGene.



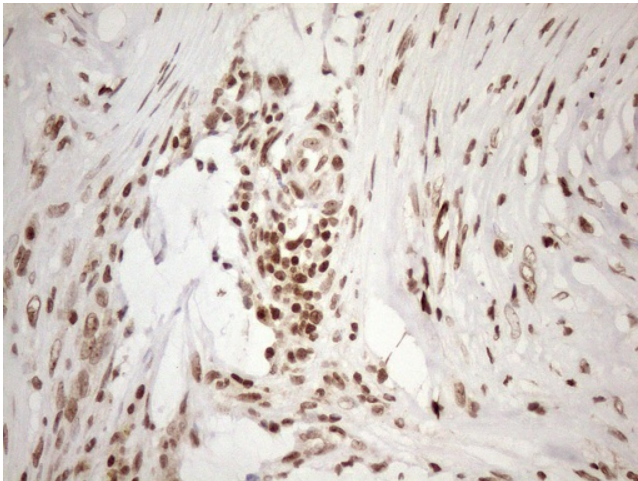
Equivalent amounts of cell lysates (10 ug per lane) of wild-type HeLa cells (WT, Cat# LC810HELA) and EXOSC1-Knockout HeLa cells (KO, Cat# [LC833502]) were separated by SDS-PAGE and immunoblotted with anti-EXOSC1 monoclonal antibody TA808591 (1:500). Then the blotted membrane was stripped and reprobed with anti-HSP90 antibody as a loading control.



Immunohistochemical staining of paraffin-embedded Human colon tissue within the normal limits using anti-EXOSC1 mouse monoclonal antibody. (Heat-induced epitope retrieval by 1mM EDTA in 10mM Tris buffer (pH8.5) at 120°C for 3min, TA808591) (1:150)



Immunohistochemical staining of paraffin-embedded Human pancreas tissue within the normal limits using anti-EXOSC1 mouse monoclonal antibody. (Heat-induced epitope retrieval by 1mM EDTA in 10mM Tris buffer (pH8.5) at 120°C for 3min, TA808591) (1:150)



Immunohistochemical staining of paraffin-embedded Carcinoma of Human pancreas tissue using anti-EXOSC1 mouse monoclonal antibody. (Heat-induced epitope retrieval by 1mM EDTA in 10mM Tris buffer (pH8.5) at 120°C for 3min, TA808591) (1:150)