

## Product datasheet for **TA808586AM**

### CENPQ Mouse Monoclonal Antibody (Biotin conjugated) [Clone ID: OTI1C5]

#### Product data:

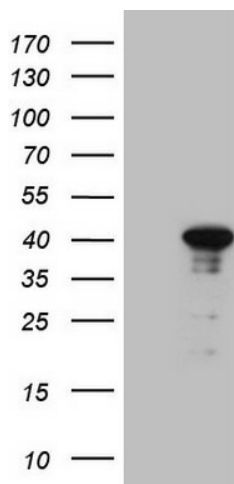
Product Type:	Primary Antibodies
Clone Name:	OTI1C5
Applications:	WB
Recommended Dilution:	WB 1:2000
Reactivity:	Human
Host:	Mouse
Isotype:	IgG1
Clonality:	Monoclonal
Immunogen:	Full length human recombinant protein of human CENPQ (NP_060602) produced in E.coli.
Formulation:	PBS (pH 7.3) containing 1% BSA, 50% glycerol and 0.02% sodium azide.
Concentration:	0.5 mg/ml
Purification:	Purified from mouse ascites fluids or tissue culture supernatant by affinity chromatography (protein A/G)
Conjugation:	Biotin
Storage:	Store at -20°C as received.
Stability:	Stable for 12 months from date of receipt.
Predicted Protein Size:	30.4 kDa
Gene Name:	centromere protein Q
Database Link:	<a href="#">NP_060602</a> <a href="#">Entrez Gene 55166 Human</a> <a href="#">Q7L2Z9</a>
Background:	CENPQ is a subunit of a CENPH (MIM 605607)-CENPI (MIM 300065)-associated centromeric complex that targets CENPA (MIM 117139) to centromeres and is required for proper kinetochore function and mitotic progression (Okada et al., 2006 [PubMed 16622420]). [supplied by OMIM, Mar 2008]. ##Evidence-Data-START## Transcript exon combination :: AK293016.1, BC016279.1 [ECO:0000332] RNAseq introns :: single sample supports all introns ERS025082, ERS025083 [ECO:0000348] ##Evidence-Data-END## COMPLETENESS: complete on the 3' end.



[View online »](#)

Synonyms: C6orf139; CENP-Q

### Product images:



HEK293T cells were transfected with the pCMV6-ENTRY control (Cat# [PS100001], Left lane) or pCMV6-ENTRY CENPQ (Cat# [RC201897], Right lane) cDNA for 48 hrs and lysed. Equivalent amounts of cell lysates (5 ug per lane) were separated by SDS-PAGE and immunoblotted with anti-CENPQ (Cat# [TA808586])(1:2000). Positive lysates [LY413285] (100ug) and [LC413285] (20ug) can be purchased separately from OriGene.