

Product datasheet for **TA808580S**

RBMS1 Mouse Monoclonal Antibody [Clone ID: OTI2H1]

Product data:

Product Type:	Primary Antibodies
Clone Name:	OTI2H1
Applications:	IHC, WB
Recommended Dilution:	WB 1:2000, IHC 1:150
Reactivity:	Human, Mouse, Rat
Host:	Mouse
Isotype:	IgG1
Clonality:	Monoclonal
Immunogen:	Full length human recombinant protein of human RBMS1(NP_058520) produced in E.coli.
Formulation:	PBS (pH 7.3) containing 1% BSA, 50% glycerol and 0.02% sodium azide.
Concentration:	1 mg/ml
Purification:	Purified from mouse ascites fluids or tissue culture supernatant by affinity chromatography (protein A/G)
Conjugation:	Unconjugated
Storage:	Store at -20°C as received.
Stability:	Stable for 12 months from date of receipt.
Predicted Protein Size:	44.3 kDa
Gene Name:	RNA binding motif single stranded interacting protein 1
Database Link:	NP_058520 Entrez Gene 56878 Mouse Entrez Gene 362138 Rat Entrez Gene 5937 Human P29558



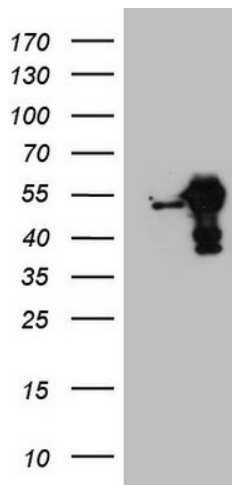
[View online »](#)

Background:

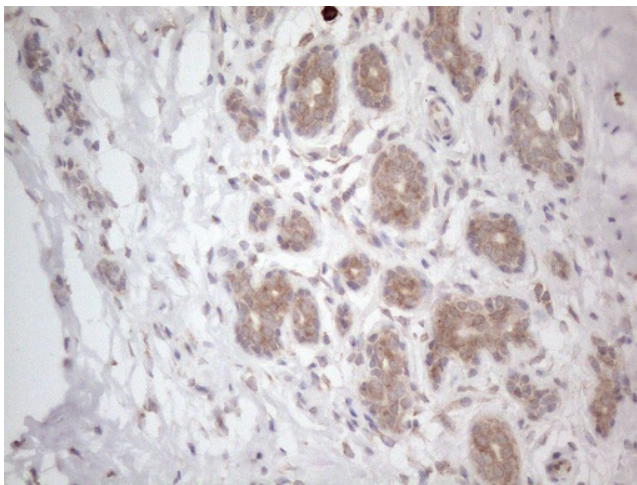
This gene encodes a member of a small family of proteins which bind single stranded DNA/RNA. These proteins are characterized by the presence of two sets of ribonucleoprotein consensus sequence (RNP-CS) that contain conserved motifs, RNP1 and RNP2, originally described in RNA binding proteins, and required for DNA binding. These proteins have been implicated in such diverse functions as DNA replication, gene transcription, cell cycle progression and apoptosis. Several transcript variants, resulting from alternative splicing and encoding different isoforms, have been described. A pseudogene for this locus is found on chromosome 12. [provided by RefSeq, Feb 2009]

Synonyms:

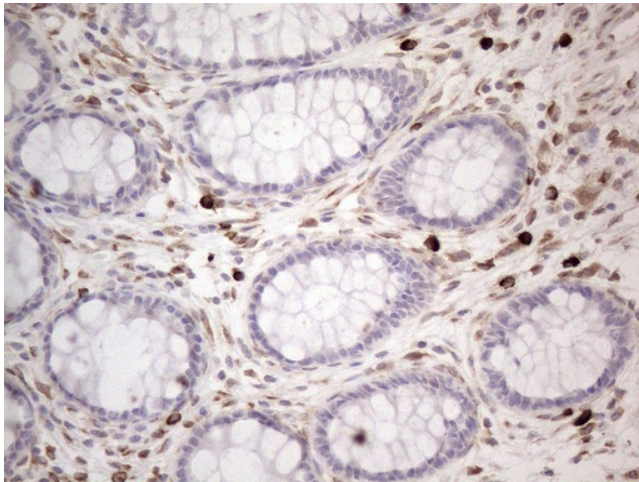
C2orf12; HCC-4; MSSP; MSSP-1; MSSP-2; MSSP-3; SCR2; YC1

Product images:

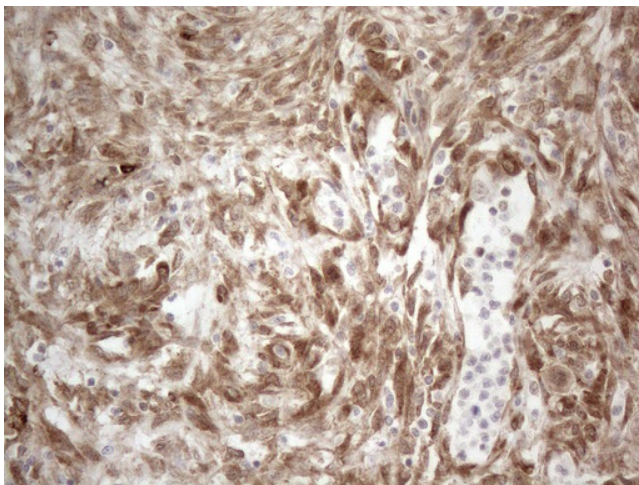
HEK293T cells were transfected with the pCMV6-ENTRY control (Cat# [PS100001], Left lane) or pCMV6-ENTRY RBMS1 (Cat# [RC203437], Right lane) cDNA for 48 hrs and lysed. Equivalent amounts of cell lysates (5 ug per lane) were separated by SDS-PAGE and immunoblotted with anti-RBMS1 (Cat# [TA808580])(1:2000). Positive lysates [LY413821] (100ug) and [LC413821] (20ug) can be purchased separately from OriGene.



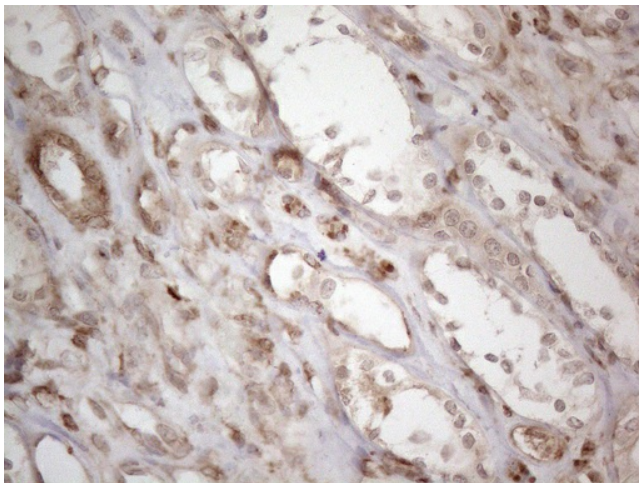
Immunohistochemical staining of paraffin-embedded Human breast tissue within the normal limits using anti-RBMS1 mouse monoclonal antibody. (Heat-induced epitope retrieval by 1mM EDTA in 10mM Tris buffer (pH8.5) at 120°C for 3min, [TA808580]) (1:150)



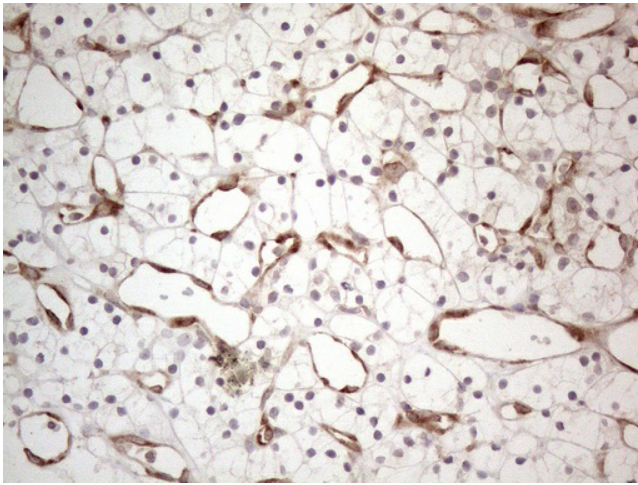
Immunohistochemical staining of paraffin-embedded Human colon tissue within the normal limits using anti-RBMS1 mouse monoclonal antibody. (Heat-induced epitope retrieval by 1mM EDTA in 10mM Tris buffer (pH8.5) at 120°C for 3min, [TA808580]) (1:150)



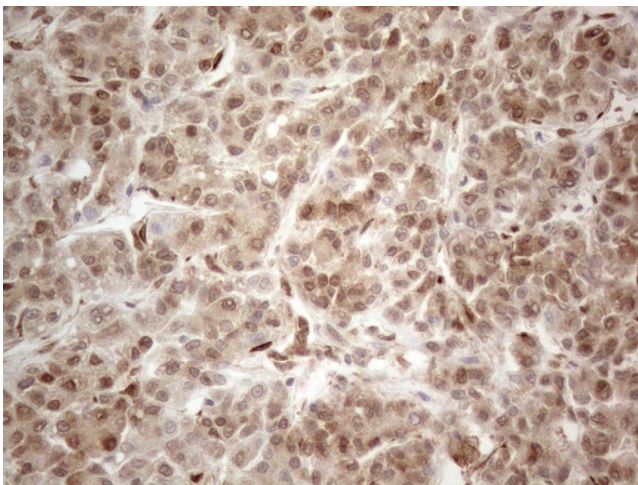
Immunohistochemical staining of paraffin-embedded Adenocarcinoma of Human colon tissue using anti-RBMS1 mouse monoclonal antibody. (Heat-induced epitope retrieval by 1mM EDTA in 10mM Tris buffer (pH8.5) at 120°C for 3min, [TA808580]) (1:150)



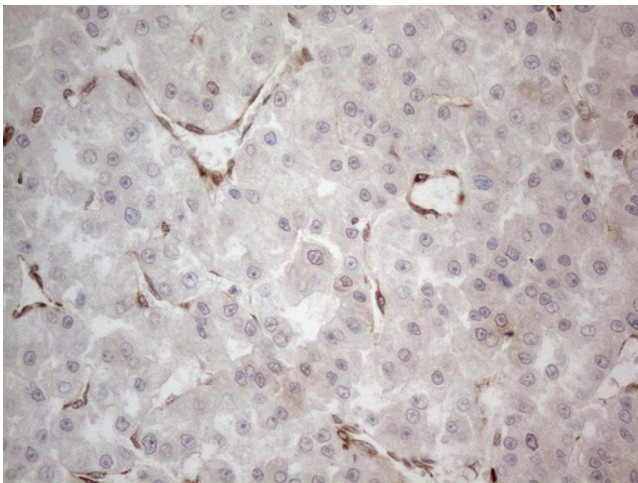
Immunohistochemical staining of paraffin-embedded Human Kidney tissue within the normal limits using anti-RBMS1 mouse monoclonal antibody. (Heat-induced epitope retrieval by 1mM EDTA in 10mM Tris buffer (pH8.5) at 120°C for 3min, [TA808580]) (1:150)



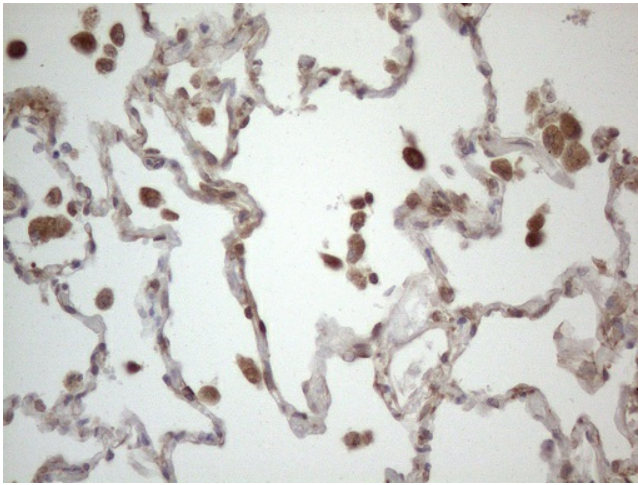
Immunohistochemical staining of paraffin-embedded Carcinoma of Human kidney tissue using anti-RBMS1 mouse monoclonal antibody. (Heat-induced epitope retrieval by 1mM EDTA in 10mM Tris buffer (pH8.5) at 120°C for 3min, [TA808580]) (1:150)



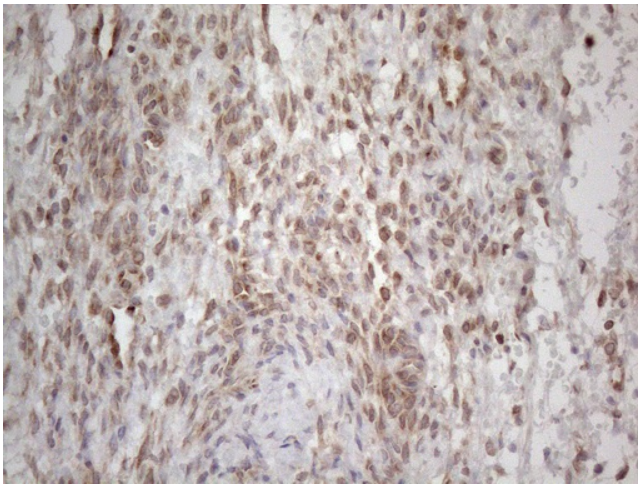
Immunohistochemical staining of paraffin-embedded Human liver tissue within the normal limits using anti-RBMS1 mouse monoclonal antibody. (Heat-induced epitope retrieval by 1mM EDTA in 10mM Tris buffer (pH8.5) at 120°C for 3min, [TA808580]) (1:150)



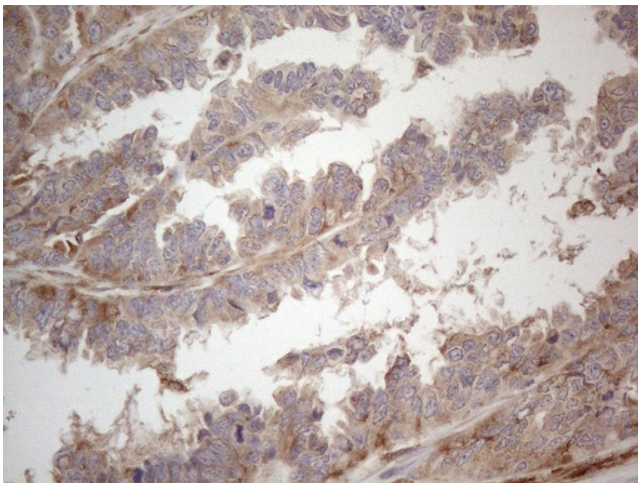
Immunohistochemical staining of paraffin-embedded Carcinoma of Human liver tissue using anti-RBMS1 mouse monoclonal antibody. (Heat-induced epitope retrieval by 1mM EDTA in 10mM Tris buffer (pH8.5) at 120°C for 3min, [TA808580]) (1:150)



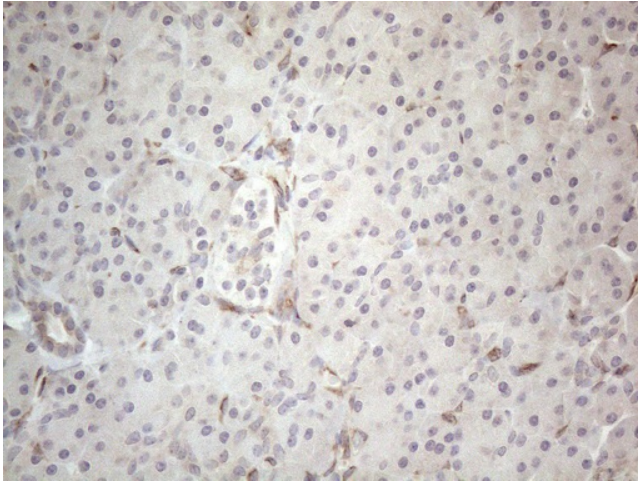
Immunohistochemical staining of paraffin-embedded Human lung tissue within the normal limits using anti-RBMS1 mouse monoclonal antibody. (Heat-induced epitope retrieval by 1mM EDTA in 10mM Tris buffer (pH8.5) at 120°C for 3min, [TA808580]) (1:150)



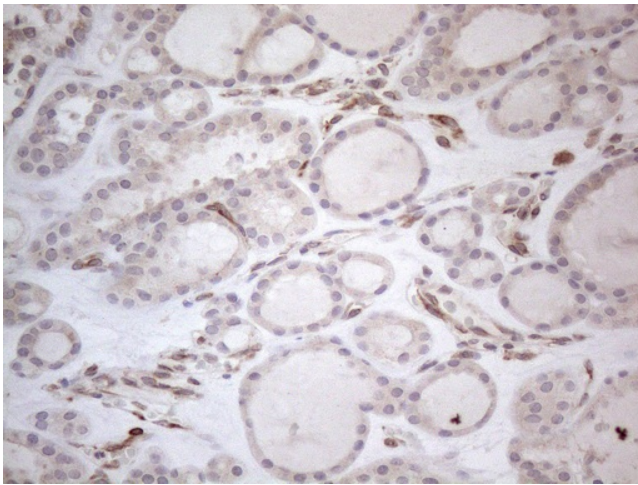
Immunohistochemical staining of paraffin-embedded Human Ovary tissue within the normal limits using anti-RBMS1 mouse monoclonal antibody. (Heat-induced epitope retrieval by 1mM EDTA in 10mM Tris buffer (pH8.5) at 120°C for 3min, [TA808580]) (1:150)



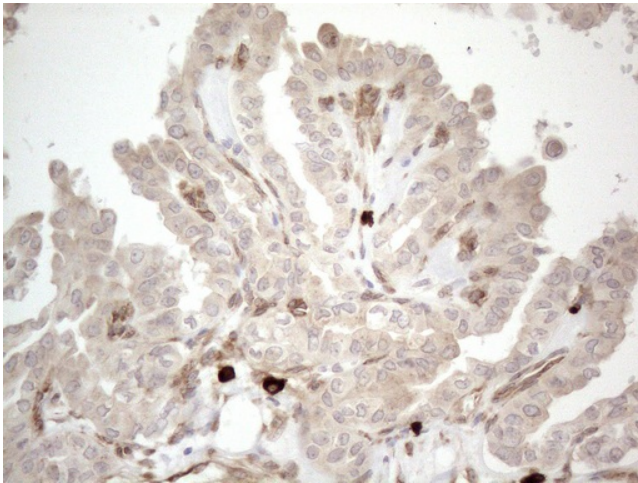
Immunohistochemical staining of paraffin-embedded Adenocarcinoma of Human ovary tissue using anti-RBMS1 mouse monoclonal antibody. (Heat-induced epitope retrieval by 1mM EDTA in 10mM Tris buffer (pH8.5) at 120°C for 3min, [TA808580]) (1:150)



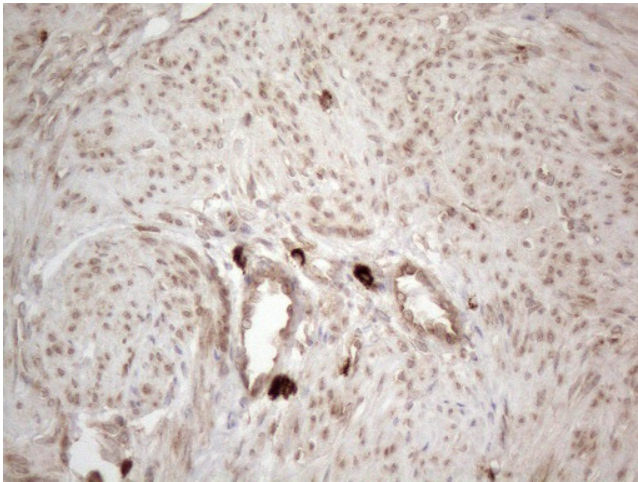
Immunohistochemical staining of paraffin-embedded Human pancreas tissue within the normal limits using anti-RBMS1 mouse monoclonal antibody. (Heat-induced epitope retrieval by 1mM EDTA in 10mM Tris buffer (pH8.5) at 120°C for 3min, [TA808580]) (1:150)



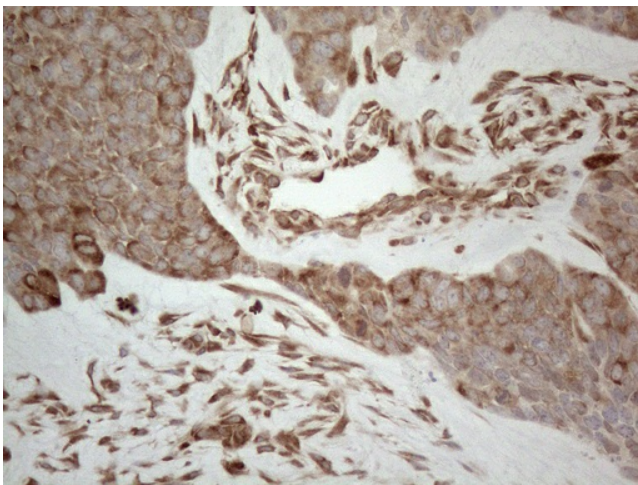
Immunohistochemical staining of paraffin-embedded Human thyroid tissue within the normal limits using anti-RBMS1 mouse monoclonal antibody. (Heat-induced epitope retrieval by 1mM EDTA in 10mM Tris buffer (pH8.5) at 120°C for 3min, [TA808580]) (1:150)



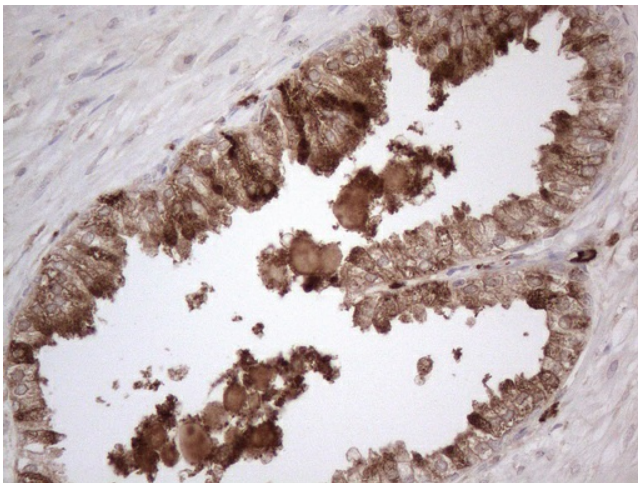
Immunohistochemical staining of paraffin-embedded Carcinoma of Human thyroid tissue using anti-RBMS1 mouse monoclonal antibody. (Heat-induced epitope retrieval by 1mM EDTA in 10mM Tris buffer (pH8.5) at 120°C for 3min, [TA808580]) (1:150)



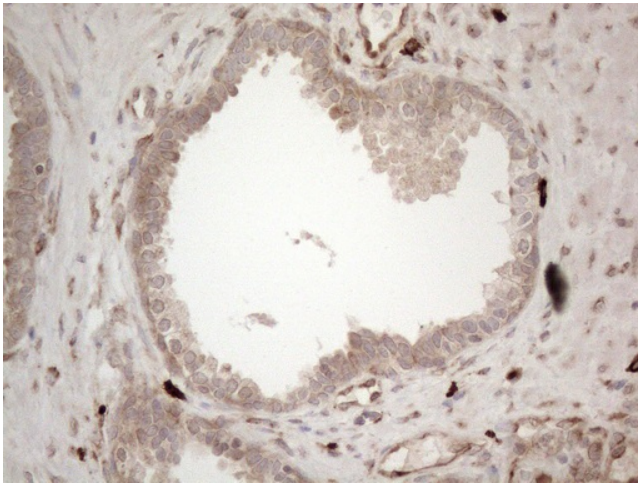
Immunohistochemical staining of paraffin-embedded Human endometrium tissue within the normal limits using anti-RBMS1 mouse monoclonal antibody. (Heat-induced epitope retrieval by 1mM EDTA in 10mM Tris buffer (pH8.5) at 120°C for 3min, [TA808580]) (1:150)



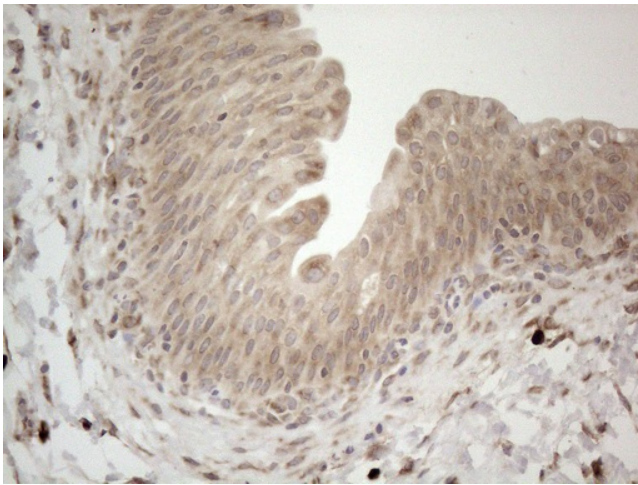
Immunohistochemical staining of paraffin-embedded Adenocarcinoma of Human endometrium tissue using anti-RBMS1 mouse monoclonal antibody. (Heat-induced epitope retrieval by 1mM EDTA in 10mM Tris buffer (pH8.5) at 120°C for 3min, [TA808580]) (1:150)



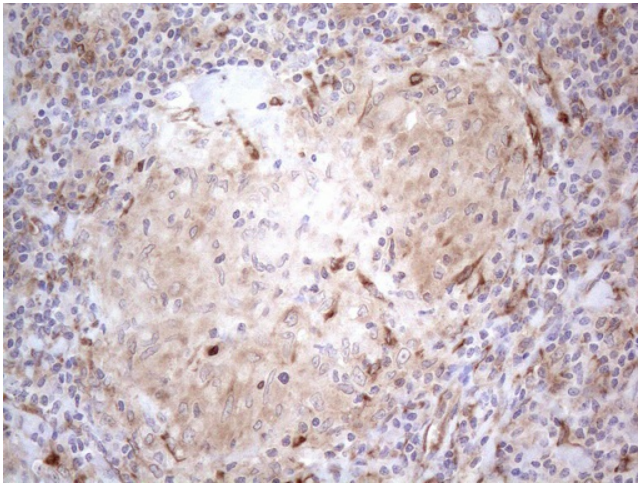
Immunohistochemical staining of paraffin-embedded Human prostate tissue within the normal limits using anti-RBMS1 mouse monoclonal antibody. (Heat-induced epitope retrieval by 1mM EDTA in 10mM Tris buffer (pH8.5) at 120°C for 3min, [TA808580]) (1:150)



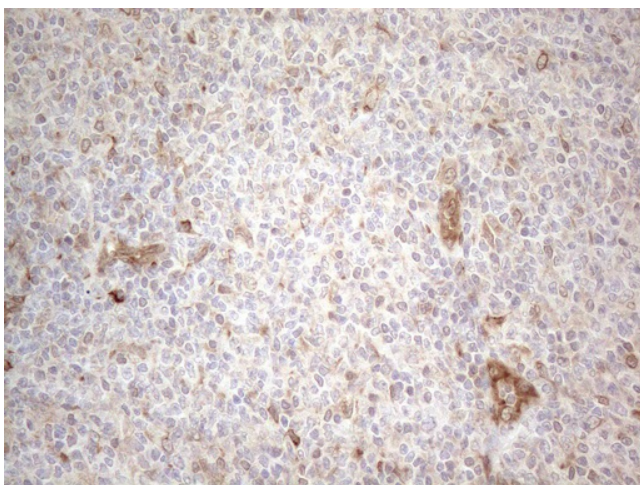
Immunohistochemical staining of paraffin-embedded Carcinoma of Human prostate tissue using anti-RBMS1 mouse monoclonal antibody. (Heat-induced epitope retrieval by 1mM EDTA in 10mM Tris buffer (pH8.5) at 120°C for 3min, [TA808580]) (1:150)



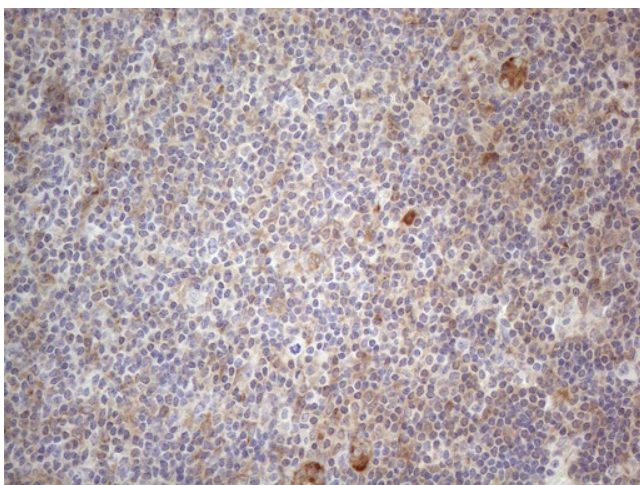
Immunohistochemical staining of paraffin-embedded Human bladder tissue within the normal limits using anti-RBMS1 mouse monoclonal antibody. (Heat-induced epitope retrieval by 1mM EDTA in 10mM Tris buffer (pH8.5) at 120°C for 3min, [TA808580]) (1:150)



Immunohistochemical staining of paraffin-embedded Human lymph node tissue within the normal limits using anti-RBMS1 mouse monoclonal antibody. (Heat-induced epitope retrieval by 1mM EDTA in 10mM Tris buffer (pH8.5) at 120°C for 3min, [TA808580]) (1:150)



Immunohistochemical staining of paraffin-embedded Human lymphoma tissue using anti-RBMS1 mouse monoclonal antibody. (Heat-induced epitope retrieval by 1mM EDTA in 10mM Tris buffer (pH8.5) at 120°C for 3min, [TA808580]) (1:150)



Immunohistochemical staining of paraffin-embedded Human tonsil within the normal limits using anti-RBMS1 mouse monoclonal antibody. (Heat-induced epitope retrieval by 1mM EDTA in 10mM Tris buffer (pH8.5) at 120°C for 3min, [TA808580]) (1:150)