

Product datasheet for **TA808577AM**

ERCC8 Mouse Monoclonal Antibody (Biotin conjugated) [Clone ID: OTI1G2]

Product data:

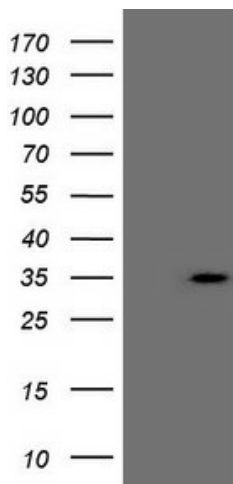
Product Type:	Primary Antibodies
Clone Name:	OTI1G2
Applications:	IHC, WB
Recommended Dilution:	WB 1:500, IHC 1:150
Reactivity:	Human, Mouse, Rat
Host:	Mouse
Isotype:	IgG1
Clonality:	Monoclonal
Immunogen:	Full length human recombinant protein of human ERCC8(NP_001007235) produced in E.coli.
Formulation:	PBS (pH 7.3) containing 1% BSA, 50% glycerol and 0.02% sodium azide.
Concentration:	0.5 mg/ml
Purification:	Purified from mouse ascites fluids or tissue culture supernatant by affinity chromatography (protein A/G)
Conjugation:	Biotin
Storage:	Store at -20°C as received.
Stability:	Stable for 12 months from date of receipt.
Predicted Protein Size:	43.9 kDa
Gene Name:	ERCC excision repair 8, CSA ubiquitin ligase complex subunit
Database Link:	NP_001007235 Entrez Gene 71991 Mouse Entrez Gene 310071 Rat Entrez Gene 1161 Human Q13216
Background:	This gene encodes a WD repeat protein, which interacts with Cockayne syndrome type B (CSB) protein and with p44 protein, a subunit of the RNA polymerase II transcription factor IIH. Mutations in this gene have been identified in patients with hereditary disease Cockayne syndrome (CS). CS cells are abnormally sensitive to ultraviolet radiation and are defective in the repair of transcriptionally active genes. Several transcript variants encoding different isoforms have been found for this gene. [provided by RefSeq, Mar 2014]



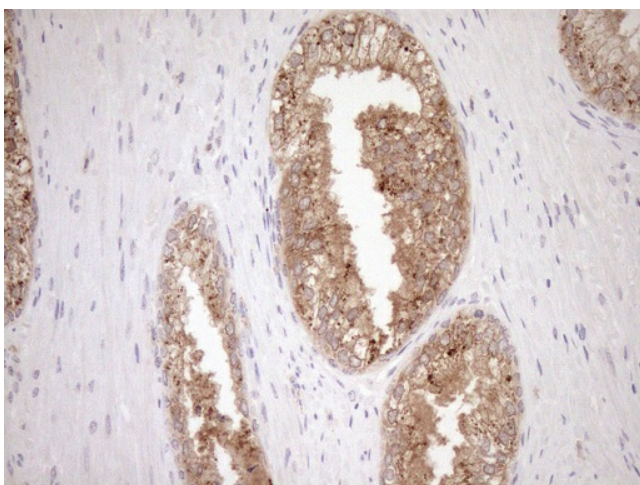
[View online »](#)

Synonyms: CKN1; CSA; UVSS2
Protein Families: Druggable Genome, Transcription Factors
Protein Pathways: Nucleotide excision repair, Ubiquitin mediated proteolysis

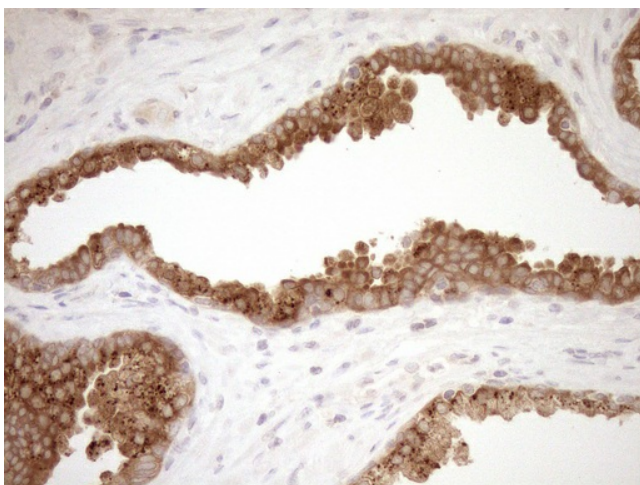
Product images:



HEK293T cells were transfected with the pCMV6-ENTRY control (Left lane) or pCMV6-ENTRY ERCC8 ([RC203124], Right lane) cDNA for 48 hrs and lysed. Equivalent amounts of cell lysates (5 ug per lane) were separated by SDS-PAGE and immunoblotted with anti-ERCC8 (1:500). Positive lysates [LY423459] (100ug) and [LC423459] (20ug) can be purchased separately from OriGene.



Immunohistochemical staining of paraffin-embedded Human prostate tissue within the normal limits using anti-ERCC8 mouse monoclonal antibody. (Heat-induced epitope retrieval by 1mM EDTA in 10mM Tris buffer (pH8.5) at 120°C for 3min, [TA808577]) (1:150)



Immunohistochemical staining of paraffin-embedded Carcinoma of Human prostate tissue using anti-ERCC8 mouse monoclonal antibody. (Heat-induced epitope retrieval by 1mM EDTA in 10mM Tris buffer (pH8.5) at 120°C for 3min, [TA808577]) (1:150)