

## Product datasheet for **TA808575AM**

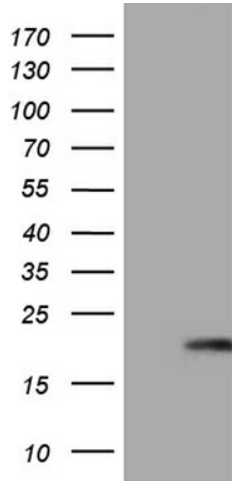
### MCEE Mouse Monoclonal Antibody (Biotin conjugated) [Clone ID: OTI13B9]

#### Product data:

Product Type:	Primary Antibodies
Clone Name:	OTI13B9
Applications:	WB
Recommended Dilution:	WB 1:500
Reactivity:	Human
Host:	Mouse
Isotype:	IgG2a
Clonality:	Monoclonal
Immunogen:	Full length human recombinant protein of human MCEE (NP_115990) produced in E.coli.
Formulation:	PBS (pH 7.3) containing 1% BSA, 50% glycerol and 0.02% sodium azide.
Concentration:	0.5 mg/ml
Purification:	Purified from mouse ascites fluids or tissue culture supernatant by affinity chromatography (protein A/G)
Conjugation:	Biotin
Storage:	Store at -20°C as received.
Stability:	Stable for 12 months from date of receipt.
Predicted Protein Size:	18.6 kDa
Gene Name:	methylmalonyl-CoA epimerase
Database Link:	<a href="#">NP_115990</a> <a href="#">Entrez Gene 84693 Human</a> <a href="#">Q96PE7</a>
Background:	The product of this gene catalyzes the interconversion of D- and L-methylmalonyl-CoA during the degradation of branched chain amino acids, odd chain-length fatty acids, and other metabolites. Mutations in this gene result in methylmalonyl-CoA epimerase deficiency, which is presented as mild to moderate methylmalonic aciduria. [provided by RefSeq, Jul 2008]
Synonyms:	GLOD2
Protein Pathways:	Metabolic pathways, Propanoate metabolism, Valine, leucine and isoleucine degradation



[View online »](#)

**Product images:**

HEK293T cells were transfected with the pCMV6-ENTRY control (Left lane) or pCMV6-ENTRY MCEE ([RC205018], Right lane) cDNA for 48 hrs and lysed. Equivalent amounts of cell lysates (5 ug per lane) were separated by SDS-PAGE and immunoblotted with anti-MCEE (1:500). Positive lysates [LY403176] (100ug) and [LC403176] (20ug) can be purchased separately from OriGene.