

Product datasheet for **TA808574**

Amelotin (AMTN) Mouse Monoclonal Antibody [Clone ID: OTI1D6]

Product data:

Product Type:	Primary Antibodies
Clone Name:	OTI1D6
Applications:	IHC, WB
Recommended Dilution:	WB 1:2000, IHC 1:150
Reactivity:	Human
Host:	Mouse
Isotype:	IgG2b
Clonality:	Monoclonal
Immunogen:	Full length human recombinant protein of human AMTN (NP_997722) produced in E.coli.
Formulation:	PBS (pH 7.3) containing 1% BSA, 50% glycerol and 0.02% sodium azide.
Concentration:	1 mg/ml
Purification:	Purified from mouse ascites fluids or tissue culture supernatant by affinity chromatography (protein A/G)
Conjugation:	Unconjugated
Storage:	Store at -20°C as received.
Stability:	Stable for 12 months from date of receipt.
Predicted Protein Size:	21.4 kDa
Gene Name:	amelotin
Database Link:	NP_997722 Entrez Gene 401138 Human Q6UX39



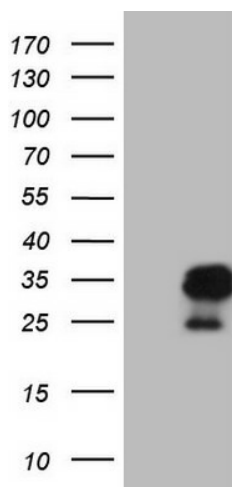
[View online »](#)

Background:

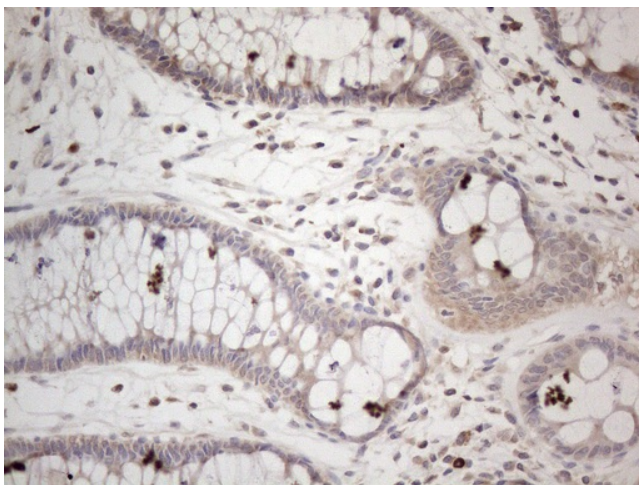
The mineralized portions of teeth, the dentin and enamel, are formed by mesenchyme-derived odontoblasts and epithelium-derived ameloblasts, respectively. As ameloblasts differentiate, they deposit specific proteins necessary for enamel formation, including amelogenin (AMELX; MIM 300391), enamelin (ENAM; MIM 606585), and ameloblastin (AMBN; MIM 601259), in the organic enamel matrix. Amelotin is specifically expressed in maturation-stage ameloblasts (Iwasaki et al., 2005 [PubMed 16304441]). [supplied by OMIM, Mar 2008]. Transcript Variant: This variant (2) uses an alternate in-frame splice junction at the 5' end of an exon compared to variant 1. The resulting isoform (2) has the same N- and C-termini but is 1 aa shorter compared to isoform 1. ##Evidence-Data-START## Transcript exon combination :: BC121812.1 [ECO:0000332] ##Evidence-Data-END## COMPLETENESS: complete on the 3' end.

Synonyms:

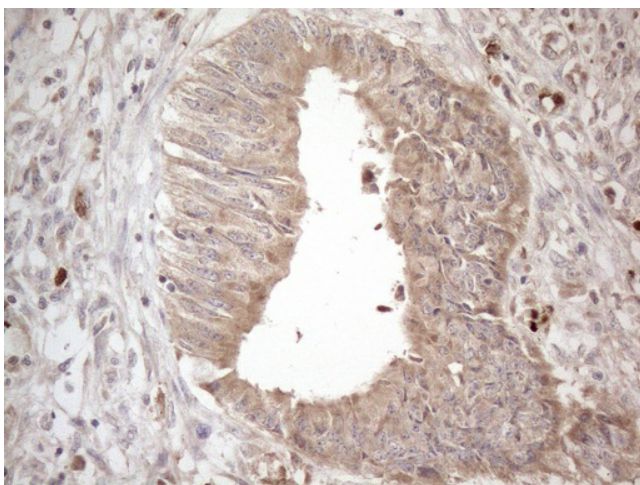
UNQ689

Product images:

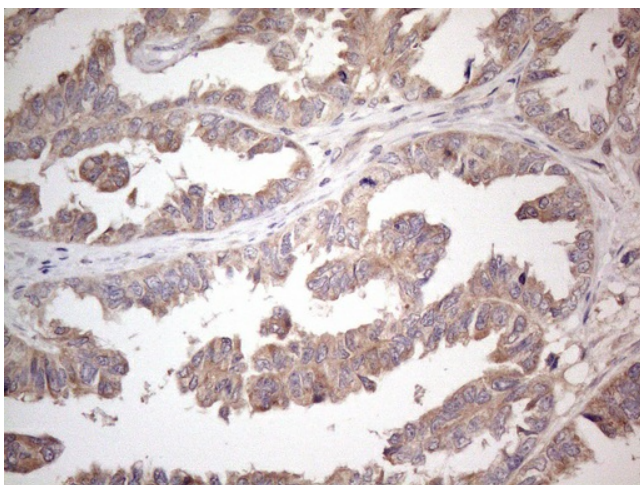
HEK293T cells were transfected with the pCMV6-ENTRY control (Left lane) or pCMV6-ENTRY AMTN ([RC221473], Right lane) cDNA for 48 hrs and lysed. Equivalent amounts of cell lysates (5 ug per lane) were separated by SDS-PAGE and immunoblotted with anti-AMTN (1:2000). Positive lysates [LY403899] (100ug) and [LC403899] (20ug) can be purchased separately from OriGene.



Immunohistochemical staining of paraffin-embedded Human colon tissue within the normal limits using anti-AMTN mouse monoclonal antibody. (Heat-induced epitope retrieval by 1mM EDTA in 10mM Tris buffer (pH8.5) at 120°C for 3min, TA808574) (1:150)



Immunohistochemical staining of paraffin-embedded Adenocarcinoma of Human colon tissue using anti-AMTN mouse monoclonal antibody. (Heat-induced epitope retrieval by 1mM EDTA in 10mM Tris buffer (pH8.5) at 120°C for 3min, TA808574) (1:150)



Immunohistochemical staining of paraffin-embedded Adenocarcinoma of Human ovary tissue using anti-AMTN mouse monoclonal antibody. (Heat-induced epitope retrieval by 1mM EDTA in 10mM Tris buffer (pH8.5) at 120°C for 3min, TA808574) (1:150)