

## Product datasheet for **TA808571BM**

### **TFIIB (GTF2B) Mouse Monoclonal Antibody (HRP conjugated) [Clone ID: OTI2A7]**

#### **Product data:**

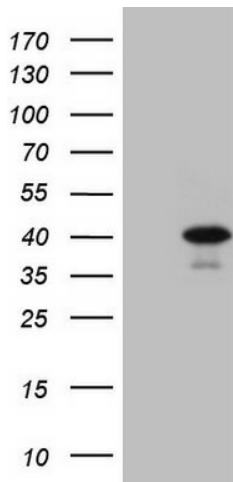
<b>Product Type:</b>	Primary Antibodies
<b>Clone Name:</b>	OTI2A7
<b>Applications:</b>	WB
<b>Recommended Dilution:</b>	WB 1:2000
<b>Reactivity:</b>	Human, Mouse, Rat
<b>Host:</b>	Mouse
<b>Isotype:</b>	IgG1
<b>Clonality:</b>	Monoclonal
<b>Immunogen:</b>	Human recombinant protein fragment corresponding to amino acids 43-316 of human GTF2B(NP_001505) produced in E.coli.
<b>Formulation:</b>	PBS (pH 7.3) containing 1% BSA, 50% glycerol.
<b>Concentration:</b>	0.5 mg/ml
<b>Purification:</b>	Purified from mouse ascites fluids or tissue culture supernatant by affinity chromatography (protein A/G)
<b>Conjugation:</b>	HRP
<b>Storage:</b>	Store at -20°C as received.
<b>Stability:</b>	Stable for 12 months from date of receipt.
<b>Predicted Protein Size:</b>	34.7 kDa
<b>Gene Name:</b>	general transcription factor IIB
<b>Database Link:</b>	<a href="#">NP_001505</a> <a href="#">Entrez Gene 81673 Rat</a> <a href="#">Entrez Gene 229906 Mouse</a> <a href="#">Entrez Gene 2959 Human</a> <a href="#">Q00403</a>
<b>Background:</b>	This gene encodes the general transcription factor IIB, one of the ubiquitous factors required for transcription initiation by RNA polymerase II. The protein localizes to the nucleus where it forms a complex (the DAB complex) with transcription factors IID and IIA. Transcription factor IIB serves as a bridge between IID, the factor which initially recognizes the promoter sequence, and RNA polymerase II. [provided by RefSeq, Jul 2008]



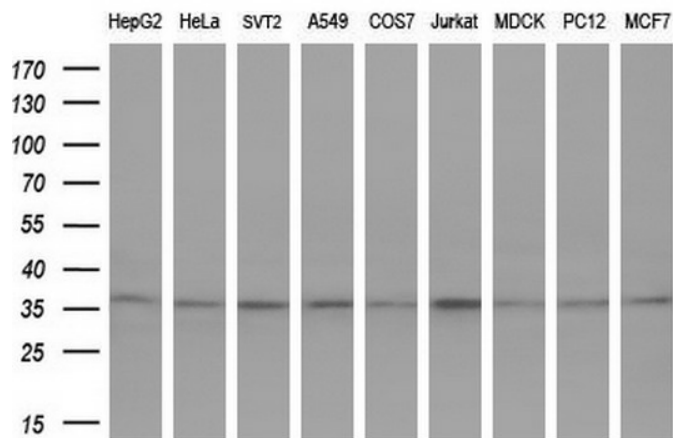
[View online »](#)

**Synonyms:** TF2B; TFIIB  
**Protein Families:** Druggable Genome, Transcription Factors  
**Protein Pathways:** Basal transcription factors

**Product images:**



HEK293T cells were transfected with the pCMV6-ENTRY control (Left lane) or pCMV6-ENTRY GTF2B ([RC204607], Right lane) cDNA for 48 hrs and lysed. Equivalent amounts of cell lysates (5 ug per lane) were separated by SDS-PAGE and immunoblotted with anti-GTF2B (1:2000). Positive lysates [LY400582] (100ug) and [LC400582] (20ug) can be purchased separately from OriGene.



Western blot analysis of extracts (10ug) from 9 different cell lines by using anti-GTF2B monoclonal antibody (HepG2: human; HeLa: human; SVT2: mouse; A549: human; COS7: monkey; Jurkat: human; MDCK: canine; PC12: rat; MCF7: human) (1:2000).