

Product datasheet for **TA808558AM**

ATF3 Mouse Monoclonal Antibody (Biotin conjugated) [Clone ID: OTI5G9]

Product data:

| | |
|-------------------------|---|
| Product Type: | Primary Antibodies |
| Clone Name: | OTI5G9 |
| Applications: | WB |
| Recommended Dilution: | WB 1:2000 |
| Reactivity: | Human |
| Host: | Mouse |
| Isotype: | IgG2b |
| Clonality: | Monoclonal |
| Immunogen: | Full length human recombinant protein of human ATF3(NP_001025458) produced in E.coli. |
| Formulation: | PBS (pH 7.3) containing 1% BSA, 50% glycerol and 0.02% sodium azide. |
| Concentration: | 0.5 mg/ml |
| Purification: | Purified from mouse ascites fluids or tissue culture supernatant by affinity chromatography (protein A/G) |
| Conjugation: | Biotin |
| Storage: | Store at -20°C as received. |
| Stability: | Stable for 12 months from date of receipt. |
| Predicted Protein Size: | 20.4 kDa |
| Gene Name: | activating transcription factor 3 |
| Database Link: | NP_001025458 Entrez Gene 467 Human P18847 |
| Background: | This gene encodes a member of the mammalian activation transcription factor/cAMP responsive element-binding (CREB) protein family of transcription factors. This gene is induced by a variety of signals, including many of those encountered by cancer cells, and is involved in the complex process of cellular stress response. Multiple transcript variants encoding different isoforms have been found for this gene. It is possible that alternative splicing of this gene may be physiologically important in the regulation of target genes. [provided by RefSeq, Apr 2011] |

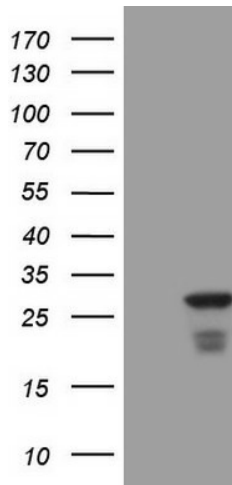


[View online »](#)

Synonyms: FLJ41705

Protein Families: Transcription Factors

Product images:



HEK293T cells were transfected with the pCMV6-ENTRY control (Cat# [PS100001], Left lane) or pCMV6-ENTRY ATF3 (Cat# [RC202897], Right lane) cDNA for 48 hrs and lysed. Equivalent amounts of cell lysates (5 ug per lane) were separated by SDS-PAGE and immunoblotted with anti-ATF3 (Cat# [TA808558])(1:2000). Positive lysates [LY422248] (100ug) and [LC422248] (20ug) can be purchased separately from OriGene.

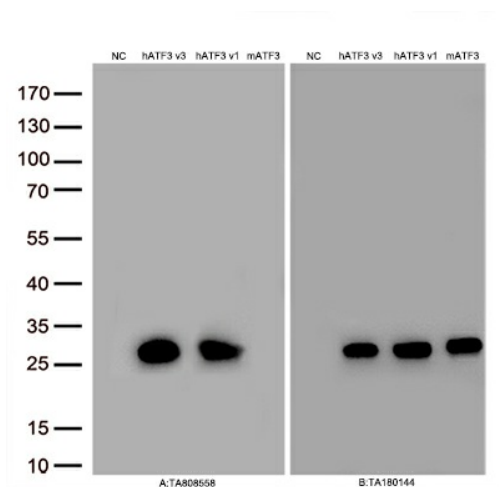


Figure A, Western blot analysis of overexpressed lysates(15ug per lane) from HEK293T cells transfected with empty plasmid ([PS100001], NC) , human ATF3 v3 plasmid ([RC202897], hATF3 v3), human ATF3 v1 plasmid ([RC218939], hATF3 v1), mouse ATF3 plasmid ([MR201634], mATF3) using anti-ATF3 antibody [TA808558] (1:500). Figure B, Western blot analysis of the same samples as figure A with anti-DDK antibody ([TA180144], 1:1000)