

Product datasheet for **TA808558**

ATF3 Mouse Monoclonal Antibody [Clone ID: OTI5G9]

Product data:

Product Type:	Primary Antibodies
Clone Name:	OTI5G9
Applications:	WB
Recommended Dilution:	WB 1:2000
Reactivity:	Human
Host:	Mouse
Isotype:	IgG2b
Clonality:	Monoclonal
Immunogen:	Full length human recombinant protein of human ATF3(NP_001025458) produced in E.coli.
Formulation:	PBS (pH 7.3) containing 1% BSA, 50% glycerol and 0.02% sodium azide.
Concentration:	1 mg/ml
Purification:	Purified from mouse ascites fluids or tissue culture supernatant by affinity chromatography (protein A/G)
Conjugation:	Unconjugated
Storage:	Store at -20°C as received.
Stability:	Stable for 12 months from date of receipt.
Predicted Protein Size:	20.4 kDa
Gene Name:	activating transcription factor 3
Database Link:	NP_001025458 Entrez Gene 467 Human P18847
Background:	This gene encodes a member of the mammalian activation transcription factor/cAMP responsive element-binding (CREB) protein family of transcription factors. This gene is induced by a variety of signals, including many of those encountered by cancer cells, and is involved in the complex process of cellular stress response. Multiple transcript variants encoding different isoforms have been found for this gene. It is possible that alternative splicing of this gene may be physiologically important in the regulation of target genes. [provided by RefSeq, Apr 2011]



[View online »](#)

Synonyms: FLJ41705

Protein Families: Transcription Factors

Product images:

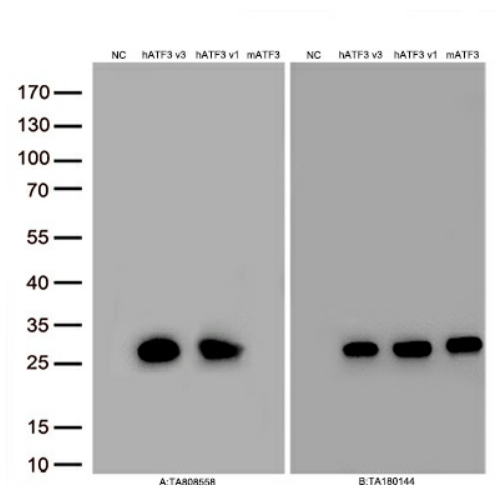
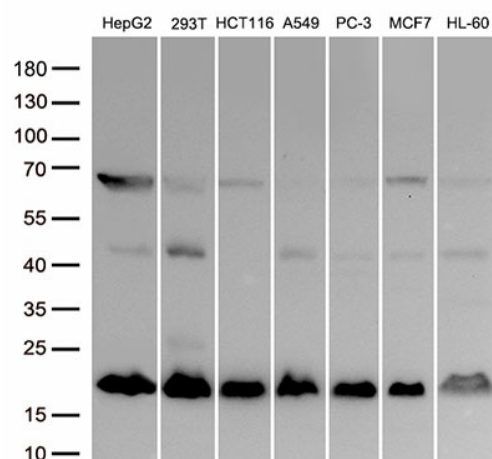


Figure A, Western blot analysis of overexpressed lysates(15ug per lane) from HEK293T cells transfected with empty plasmid ([PS100001], NC), human ATF3 v3 plasmid ([RC202897], hATF3 v3), human ATF3 v1 plasmid ([RC218939], hATF3 v1), mouse ATF3 plasmid ([MR201634], mATF3) using anti-ATF3 antibody TA808558 (1:500). Figure B, Western blot analysis of the same samples as figure A with anti-DDK antibody ([TA180144], 1:1000)



Western blot analysis of extracts (50ug per lane) from 7 cell lines lysates by using anti-ATF3 antibody. (TA808558,1:500).