

Product datasheet for **TA808549AM**

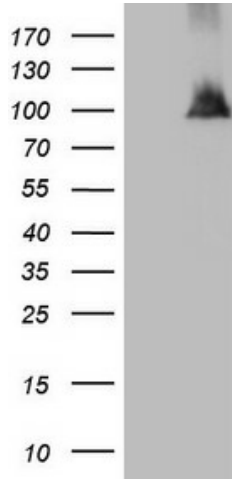
NAP1L3 Mouse Monoclonal Antibody (Biotin conjugated) [Clone ID: OTI3G3]

Product data:

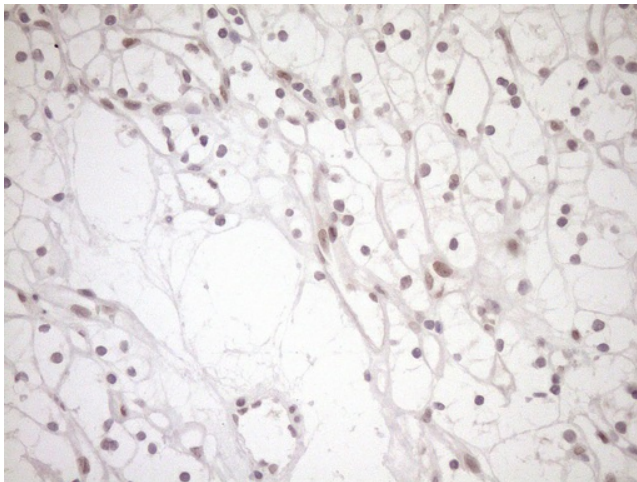
Product Type:	Primary Antibodies
Clone Name:	OTI3G3
Applications:	IHC, WB
Recommended Dilution:	WB 1:2000, IHC 1:150
Reactivity:	Human
Host:	Mouse
Isotype:	IgG1
Clonality:	Monoclonal
Immunogen:	Human recombinant protein fragment corresponding to amino acids 1-315 of human NAP1L3(NP_004529) produced in E.coli.
Formulation:	PBS (pH 7.3) containing 1% BSA, 50% glycerol and 0.02% sodium azide.
Concentration:	0.5 mg/ml
Purification:	Purified from mouse ascites fluids or tissue culture supernatant by affinity chromatography (protein A/G)
Conjugation:	Biotin
Storage:	Store at -20°C as received.
Stability:	Stable for 12 months from date of receipt.
Predicted Protein Size:	57.4 kDa
Gene Name:	nucleosome assembly protein 1 like 3
Database Link:	NP_004529 Entrez Gene 4675 Human Q99457
Background:	This gene is intronless and encodes a member of the nucleosome assembly protein (NAP) family. This gene is linked closely to a region of genes responsible for several X-linked mental retardation syndromes. [provided by RefSeq, Dec 2010]
Synonyms:	MB20; NPL3



[View online »](#)

Product images:

HEK293T cells were transfected with the pCMV6-ENTRY control (Cat# [PS100001], Left lane) or pCMV6-ENTRY NAP1L3 (Cat# [RC205297], Right lane) cDNA for 48 hrs and lysed. Equivalent amounts of cell lysates (5 ug per lane) were separated by SDS-PAGE and immunoblotted with anti-NAP1L3 (Cat# [TA808549])(1:2000). Positive lysates [LY417930] (100ug) and [LC417930] (20ug) can be purchased separately from OriGene.



Immunohistochemical staining of paraffin-embedded Carcinoma of Human kidney tissue using anti-NAP1L3 mouse monoclonal antibody. (Heat-induced epitope retrieval by 1mM EDTA in 10mM Tris buffer (pH8.5) at 120°C for 3min, [TA808549]) (1:150)