

Product datasheet for **TA808547**

TFIIB (GTF2B) Mouse Monoclonal Antibody [Clone ID: OTI1H10]

Product data:

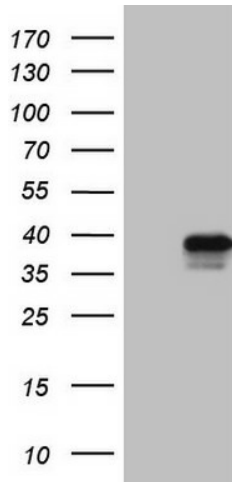
Product Type:	Primary Antibodies
Clone Name:	OTI1H10
Applications:	WB
Recommended Dilution:	WB 1:2000
Reactivity:	Human, Mouse, Rat
Host:	Mouse
Isotype:	IgG1
Clonality:	Monoclonal
Immunogen:	Human recombinant protein fragment corresponding to amino acids 43-316 of human GTF2B(NP_001505) produced in E.coli.
Formulation:	PBS (pH 7.3) containing 1% BSA, 50% glycerol and 0.02% sodium azide.
Concentration:	1 mg/ml
Purification:	Purified from mouse ascites fluids or tissue culture supernatant by affinity chromatography (protein A/G)
Conjugation:	Unconjugated
Storage:	Store at -20°C as received.
Stability:	Stable for 12 months from date of receipt.
Predicted Protein Size:	34.7 kDa
Gene Name:	general transcription factor IIB
Database Link:	NP_001505 Entrez Gene 81673 Rat Entrez Gene 229906 Mouse Entrez Gene 2959 Human Q00403
Background:	This gene encodes the general transcription factor IIB, one of the ubiquitous factors required for transcription initiation by RNA polymerase II. The protein localizes to the nucleus where it forms a complex (the DAB complex) with transcription factors IID and IIA. Transcription factor IIB serves as a bridge between IID, the factor which initially recognizes the promoter sequence, and RNA polymerase II. [provided by RefSeq, Jul 2008]



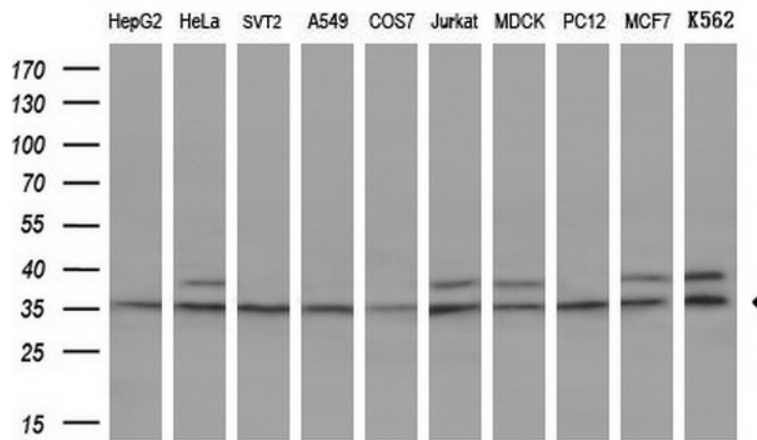
[View online »](#)

Synonyms: TF2B; TFIIB
Protein Families: Druggable Genome, Transcription Factors
Protein Pathways: Basal transcription factors

Product images:



HEK293T cells were transfected with the pCMV6-ENTRY control (Left lane) or pCMV6-ENTRY GTF2B ([RC204607], Right lane) cDNA for 48 hrs and lysed. Equivalent amounts of cell lysates (5 ug per lane) were separated by SDS-PAGE and immunoblotted with anti-GTF2B (1:2000). Positive lysates [LY400582] (100ug) and [LC400582] (20ug) can be purchased separately from OriGene.



Western blot analysis of extracts (10ug) from 10 different cell lines by using anti-GTF2B monoclonal antibody (1:200).