

Product datasheet for **TA808534S**

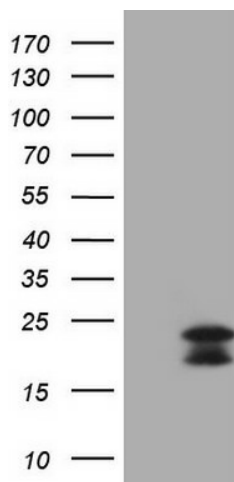
MCEE Mouse Monoclonal Antibody [Clone ID: OTI6A1]

Product data:

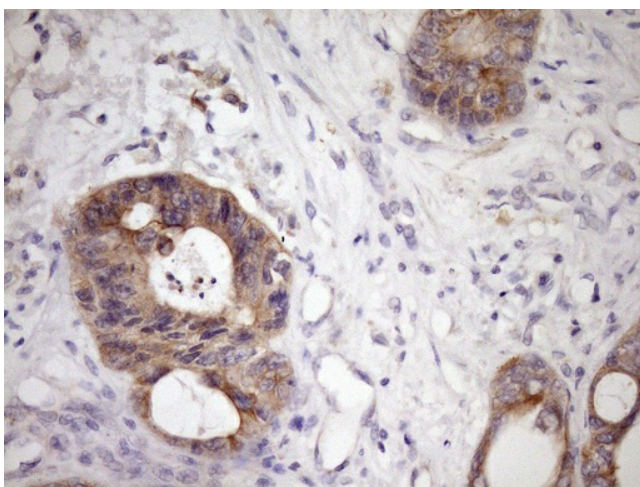
Product Type:	Primary Antibodies
Clone Name:	OTI6A1
Applications:	IHC, WB
Recommended Dilution:	WB 1:2000, IHC 1:150
Reactivity:	Human
Host:	Mouse
Isotype:	IgG2a
Clonality:	Monoclonal
Immunogen:	Full length human recombinant protein of human MCEE (NP_115990) produced in E.coli.
Formulation:	PBS (pH 7.3) containing 1% BSA, 50% glycerol and 0.02% sodium azide.
Concentration:	1 mg/ml
Purification:	Purified from mouse ascites fluids or tissue culture supernatant by affinity chromatography (protein A/G)
Conjugation:	Unconjugated
Storage:	Store at -20°C as received.
Stability:	Stable for 12 months from date of receipt.
Predicted Protein Size:	18.6 kDa
Gene Name:	methylmalonyl-CoA epimerase
Database Link:	NP_115990 Entrez Gene 84693 Human Q96PE7
Synonyms:	GLOD2
Protein Pathways:	Metabolic pathways, Propanoate metabolism, Valine, leucine and isoleucine degradation



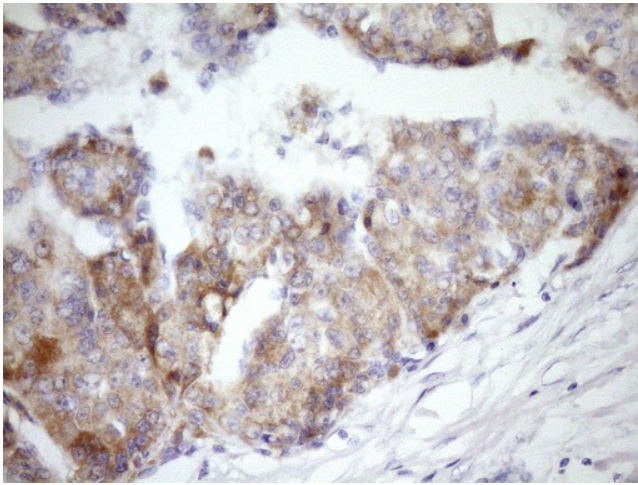
[View online »](#)

Product images:

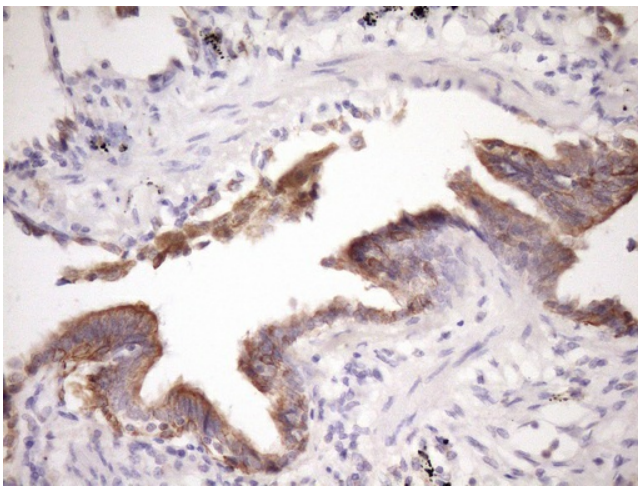
HEK293T cells were transfected with the pCMV6-ENTRY control (Left lane) or pCMV6-ENTRY MCEE ([RC205018], Right lane) cDNA for 48 hrs and lysed. Equivalent amounts of cell lysates (5 ug per lane) were separated by SDS-PAGE and immunoblotted with anti-MCEE (1:2000). Positive lysates [LY403176] (100ug) and [LC403176] (20ug) can be purchased separately from OriGene.



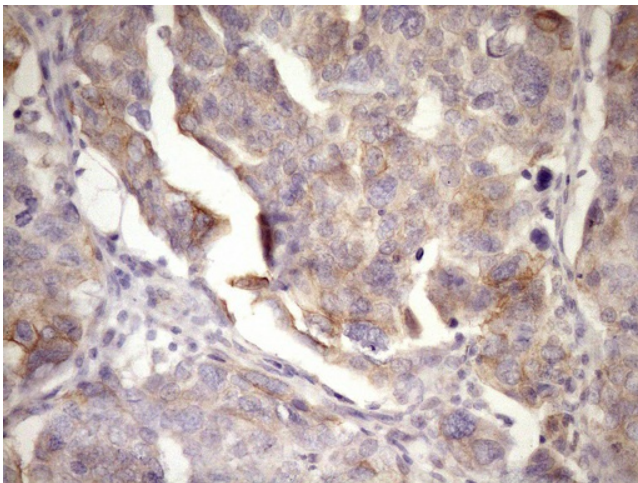
Immunohistochemical staining of paraffin-embedded Adenocarcinoma of Human colon tissue using anti-MCEE mouse monoclonal antibody. (Heat-induced epitope retrieval by Tris-EDTA, pH8.0, [TA808534]) (1:150)



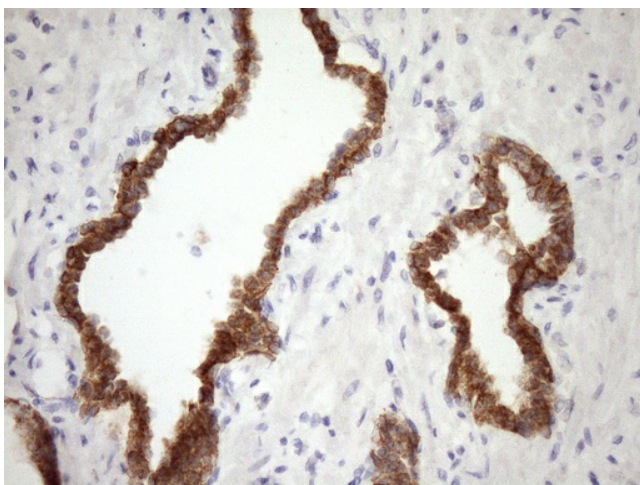
Immunohistochemical staining of paraffin-embedded Carcinoma of Human liver tissue using anti-MCEE mouse monoclonal antibody. (Heat-induced epitope retrieval by Tris-EDTA, pH8.0, [TA808534]) (1:150)



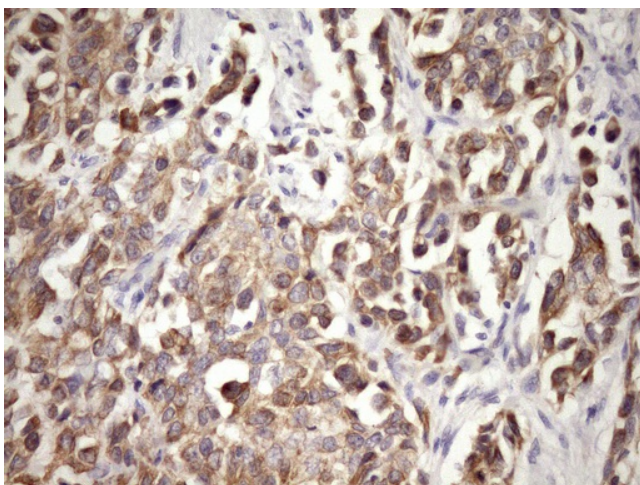
Immunohistochemical staining of paraffin-embedded Carcinoma of Human lung tissue using anti-MCEE mouse monoclonal antibody. (Heat-induced epitope retrieval by Tris-EDTA, pH8.0, [TA808534]) (1:150)



Immunohistochemical staining of paraffin-embedded Adenocarcinoma of Human ovary tissue using anti-MCEE mouse monoclonal antibody. (Heat-induced epitope retrieval by Tris-EDTA, pH8.0, [TA808534]) (1:150)



Immunohistochemical staining of paraffin-embedded Carcinoma of Human prostate tissue using anti-MCEE mouse monoclonal antibody. (Heat-induced epitope retrieval by Tris-EDTA, pH8.0, [TA808534]) (1:150)



Immunohistochemical staining of paraffin-embedded Human bladder tissue within the normal limits using anti-MCEE mouse monoclonal antibody. (Heat-induced epitope retrieval by Tris-EDTA, pH8.0, [TA808534]) (1:150)