

## Product datasheet for **TA808522M**

### BLNK Mouse Monoclonal Antibody [Clone ID: OTI2B2]

#### Product data:

Product Type:	Primary Antibodies
Clone Name:	OTI2B2
Applications:	WB
Recommended Dilution:	WB 1:2000
Reactivity:	Human, Mouse, Rat
Host:	Mouse
Isotype:	IgG1
Clonality:	Monoclonal
Immunogen:	Human recombinant protein fragment corresponding to amino acids 1-292 of human BLNK(NP_037446) produced in E.coli.
Formulation:	PBS (pH 7.3) containing 1% BSA, 50% glycerol and 0.02% sodium azide.
Concentration:	1 mg/ml
Purification:	Purified from mouse ascites fluids or tissue culture supernatant by affinity chromatography (protein A/G)
Conjugation:	Unconjugated
Storage:	Store at -20°C as received.
Stability:	Stable for 12 months from date of receipt.
Predicted Protein Size:	50.3 kDa
Gene Name:	B-cell linker
Database Link:	<a href="#">NP_037446</a> <a href="#">Entrez Gene 17060 Mouse</a> <a href="#">Entrez Gene 499356 Rat</a> <a href="#">Entrez Gene 29760 Human</a> <a href="#">Q8WV28</a>


[View online »](#)

**Background:**

This gene encodes a cytoplasmic linker or adaptor protein that plays a critical role in B cell development. This protein bridges B cell receptor-associated kinase activation with downstream signaling pathways, thereby affecting various biological functions. The phosphorylation of five tyrosine residues is necessary for this protein to nucleate distinct signaling effectors following B cell receptor activation. Mutations in this gene cause hypoglobulinemia and absent B cells, a disease in which the pro- to pre-B-cell transition is developmentally blocked. Deficiency in this protein has also been shown in some cases of pre-B acute lymphoblastic leukemia. Alternatively spliced transcript variants have been found for this gene. [provided by RefSeq, May 2012]

**Synonyms:**

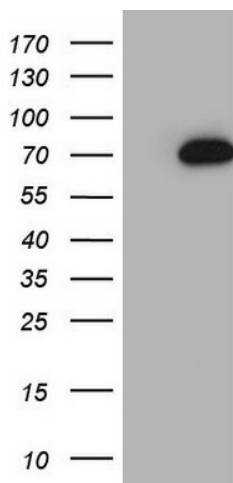
AGM4; BASH; bca; BLNK-S; LY57; SLP-65; SLP65

**Protein Families:**

Druggable Genome

**Protein Pathways:**

B cell receptor signaling pathway, Primary immunodeficiency

**Product images:**


HEK293T cells were transfected with the pCMV6-ENTRY control (Left lane) or pCMV6-ENTRY BLNK ([RC202488], Right lane) cDNA for 48 hrs and lysed. Equivalent amounts of cell lysates (5 ug per lane) were separated by SDS-PAGE and immunoblotted with anti-BLNK (1:2000). Positive lysates [LY402244] (100ug) and [LC402244] (20ug) can be purchased separately from OriGene.