

## Product datasheet for **TA808514BM**

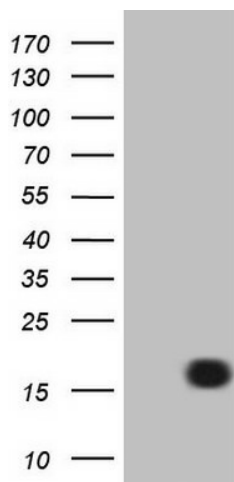
### **LELP1 Mouse Monoclonal Antibody (HRP conjugated) [Clone ID: OTI3D5]**

#### **Product data:**

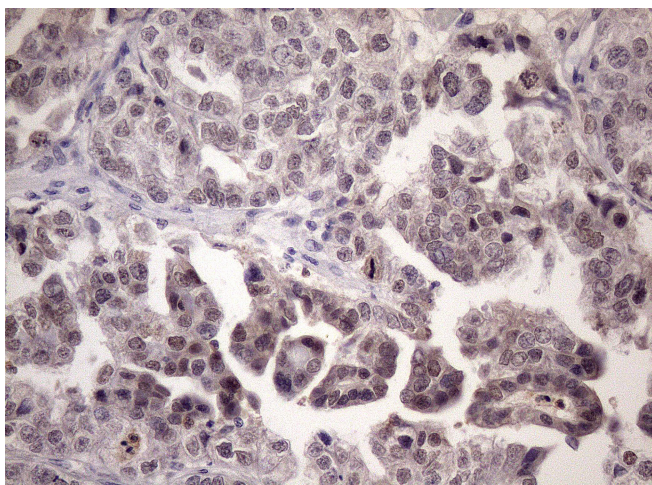
Product Type:	Primary Antibodies
Clone Name:	OTI3D5
Applications:	IHC, WB
Recommended Dilution:	WB 1:2000, IHC 1:150
Reactivity:	Human
Host:	Mouse
Isotype:	IgG1
Clonality:	Monoclonal
Immunogen:	Full length human recombinant protein of human LELP1(NP_001010857) produced in E.coli.
Formulation:	PBS (pH 7.3) containing 1% BSA, 50% glycerol.
Concentration:	0.5 mg/ml
Purification:	Purified from mouse ascites fluids or tissue culture supernatant by affinity chromatography (protein A/G)
Conjugation:	HRP
Storage:	Store at -20°C as received.
Stability:	Stable for 12 months from date of receipt.
Predicted Protein Size:	10.5 kDa
Gene Name:	late cornified envelope like proline rich 1
Database Link:	<a href="#">NP_001010857</a> <a href="#">Entrez Gene 149018 Human</a> <a href="#">Q5T871</a>
Synonyms:	late cornified envelope-like proline-rich 1; novel small proline rich protein; OTTHUMP00000015821



[View online »](#)

**Product images:**

HEK293T cells were transfected with the pCMV6-ENTRY control (Cat# [PS100001], Left lane) or pCMV6-ENTRY LELP1 (Cat# [RC223962], Right lane) cDNA for 48 hrs and lysed. Equivalent amounts of cell lysates (5 ug per lane) were separated by SDS-PAGE and immunoblotted with anti-LELP1 (Cat# [TA808514])(1:2000). Positive lysates [LY423187] (100ug) and [LC423187] (20ug) can be purchased separately from OriGene.



Immunohistochemical staining of paraffin-embedded Adenocarcinoma of Human ovary tissue using anti-LELP1 mouse monoclonal antibody. (Heat-induced epitope retrieval by 1mM EDTA in 10mM Tris buffer (pH8.5) at 120°C for 3min, [TA808514]) (1:150)