

## Product datasheet for **TA808507AM**

### MARK4 Mouse Monoclonal Antibody (Biotin conjugated) [Clone ID: OTI9B7]

#### Product data:

Product Type:	Primary Antibodies
Clone Name:	OTI9B7
Applications:	IHC, WB
Recommended Dilution:	IHC 1:150
Reactivity:	Human, Mouse, Rat
Host:	Mouse
Isotype:	IgG1
Clonality:	Monoclonal
Immunogen:	Human recombinant protein fragment corresponding to amino acids 390-467 of human MARK4(NP_113605) produced in E.coli.
Formulation:	PBS (pH 7.3) containing 1% BSA, 50% glycerol and 0.02% sodium azide.
Concentration:	0.5 mg/ml
Purification:	Purified from mouse ascites fluids or tissue culture supernatant by affinity chromatography (protein A/G)
Conjugation:	Biotin
Storage:	Store at -20°C as received.
Stability:	Stable for 12 months from date of receipt.
Gene Name:	microtubule affinity regulating kinase 4
Database Link:	<a href="#">NP_113605</a> <a href="#">Entrez Gene 232944 Mouse</a> <a href="#">Entrez Gene 57787 Human</a> <a href="#">Q96L34</a>



[View online »](#)

**Background:**

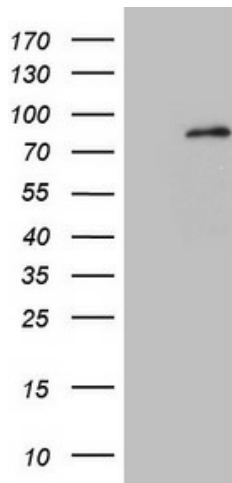
This gene encodes a member of the microtubule affinity-regulating kinase family. These protein kinases phosphorylate microtubule-associated proteins and regulate the transition between stable and dynamic microtubules. The encoded protein is associated with the centrosome throughout mitosis and may be involved in cell cycle control. Expression of this gene is a potential marker for cancer, and the encoded protein may also play a role in Alzheimer's disease. Pseudogenes of this gene are located on both the short and long arm of chromosome 3. Alternatively spliced transcript variants encoding multiple isoforms have been observed for this gene. [provided by RefSeq, Dec 2010]

**Synonyms:**

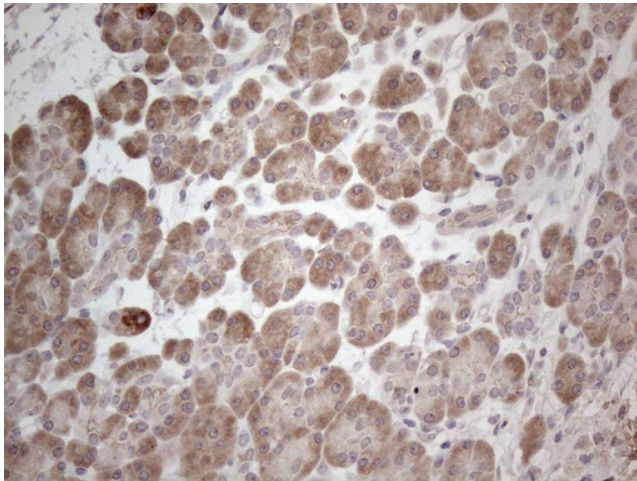
MARK4L; MARK4S; MARKL1; MARKL1L; PAR-1D

**Protein Families:**

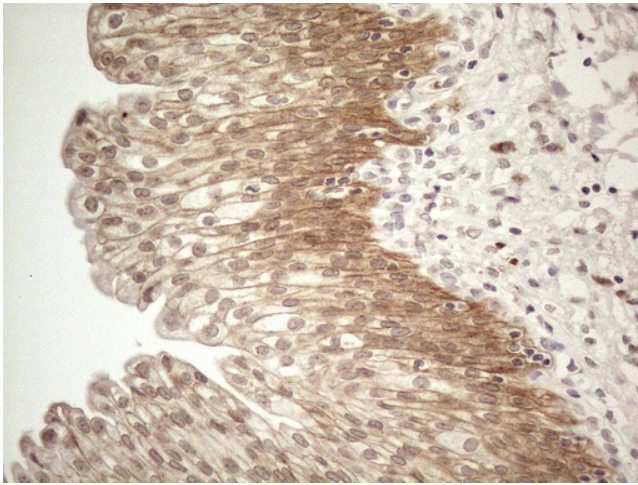
Druggable Genome, Protein Kinase

**Product images:**

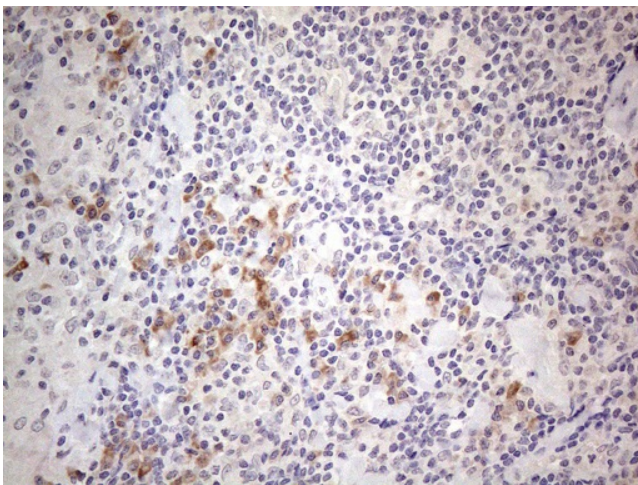
HEK293T cells were transfected with the pCMV6-ENTRY control (Cat# [PS100001], Left lane) or pCMV6-ENTRY MARK4 (Cat# [RC222580], Right lane) cDNA for 48 hrs and lysed. Equivalent amounts of cell lysates (5 ug per lane) were separated by SDS-PAGE and immunoblotted with anti-MARK4 (Cat# [TA808507]). Positive lysates [LY403112] (100ug) and [LC403112] (20ug) can be purchased separately from OriGene.



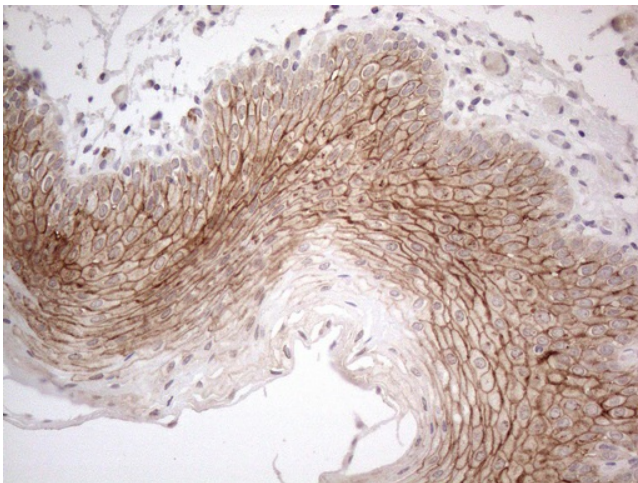
Immunohistochemical staining of paraffin-embedded Human pancreas tissue within the normal limits using anti-MARK4 mouse monoclonal antibody. (Heat-induced epitope retrieval by 1mM EDTA in 10mM Tris buffer (pH8.5) at 120°C for 3min, [TA808507]) (1:150)



Immunohistochemical staining of paraffin-embedded Human bladder tissue within the normal limits using anti-MARK4 mouse monoclonal antibody. (Heat-induced epitope retrieval by 1mM EDTA in 10mM Tris buffer (pH8.5) at 120°C for 3min, [TA808507]) (1:150)



Immunohistochemical staining of paraffin-embedded Human lymph node tissue within the normal limits using anti-MARK4 mouse monoclonal antibody. (Heat-induced epitope retrieval by 1mM EDTA in 10mM Tris buffer (pH8.5) at 120°C for 3min, [TA808507]) (1:150)



Immunohistochemical staining of paraffin-embedded Human tonsil within the normal limits using anti-MARK4 mouse monoclonal antibody. (Heat-induced epitope retrieval by 1mM EDTA in 10mM Tris buffer (pH8.5) at 120°C for 3min, [TA808507]) (1:150)