

Product datasheet for **TA808503S**

Melanophilin (MLPH) Mouse Monoclonal Antibody [Clone ID: OTI6E8]

Product data:

Product Type:	Primary Antibodies
Clone Name:	OTI6E8
Applications:	IHC, WB
Recommended Dilution:	WB 1:2000, IHC 1:150
Reactivity:	Human
Host:	Mouse
Isotype:	IgG2a
Clonality:	Monoclonal
Immunogen:	Human recombinant protein fragment corresponding to amino acids 295-600 of human MLPH(NP_077006) produced in E.coli.
Formulation:	PBS (pH 7.3) containing 1% BSA, 50% glycerol and 0.02% sodium azide.
Concentration:	1 mg/ml
Purification:	Purified from mouse ascites fluids or tissue culture supernatant by affinity chromatography (protein A/G)
Conjugation:	Unconjugated
Storage:	Store at -20°C as received.
Stability:	Stable for 12 months from date of receipt.
Predicted Protein Size:	65.8 kDa
Gene Name:	melanophilin
Database Link:	NP_077006 Entrez Gene 79083 Human Q9BV36



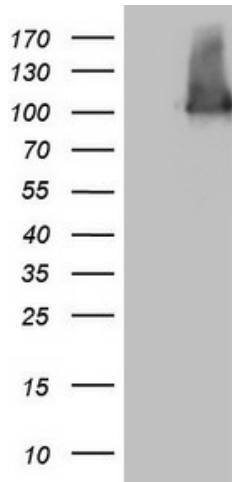
[View online »](#)

Background:

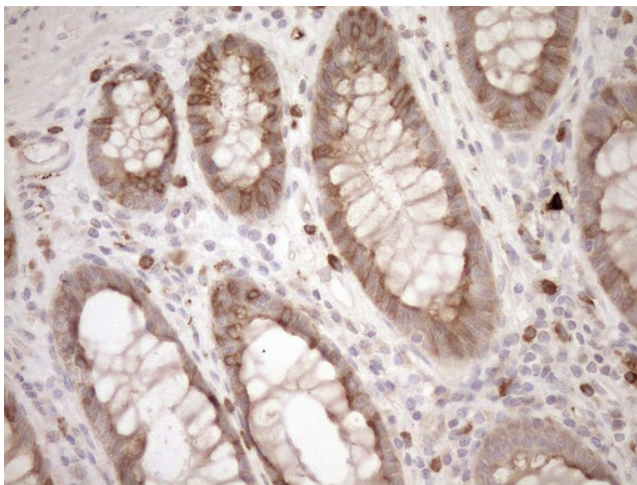
This gene encodes a member of the exophilin subfamily of Rab effector proteins. The protein forms a ternary complex with the small Ras-related GTPase Rab27A in its GTP-bound form and the motor protein myosin Va. A similar protein complex in mouse functions to tether pigment-producing organelles called melanosomes to the actin cytoskeleton in melanocytes, and is required for visible pigmentation in the hair and skin. A mutation in this gene results in Griscelli syndrome type 3, which is characterized by a silver-gray hair color and abnormal pigment distribution in the hair shaft. Several alternatively spliced transcript variants encoding different isoforms have been found for this gene. [provided by RefSeq, Jul 2013]

Synonyms:

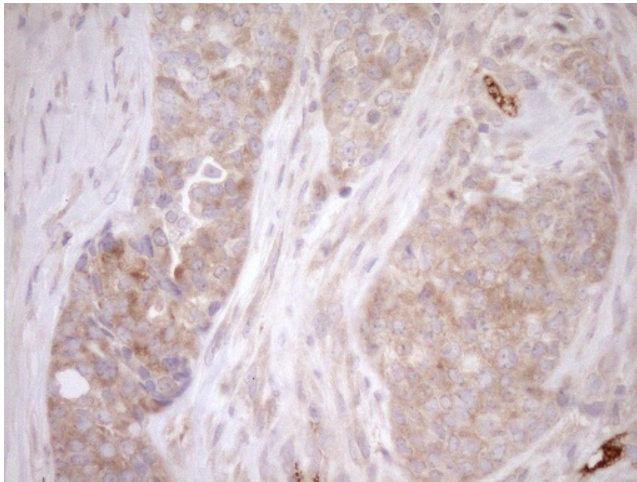
SLAC2-A

Product images:


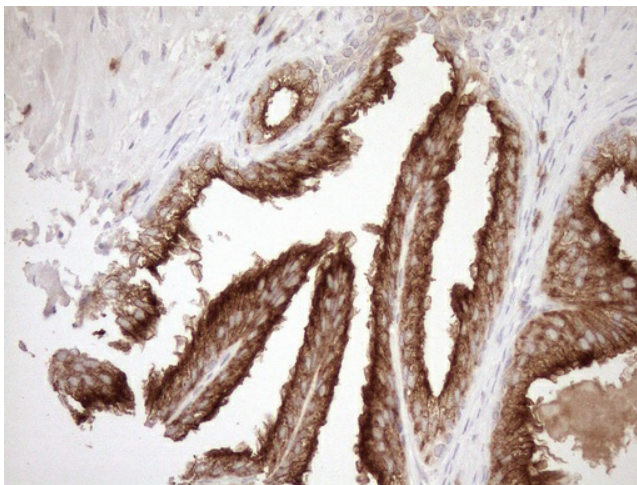
HEK293T cells were transfected with the pCMV6-ENTRY control (Left lane) or pCMV6-ENTRY MLPH ([RC200895], Right lane) cDNA for 48 hrs and lysed. Equivalent amounts of cell lysates (5 ug per lane) were separated by SDS-PAGE and immunoblotted with anti-MLPH (1:2000). Positive lysates [LY402978] (100ug) and [LC402978] (20ug) can be purchased separately from OriGene.



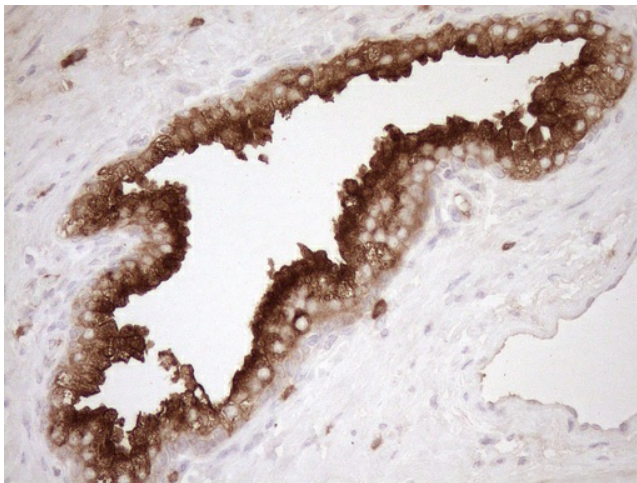
Immunohistochemical staining of paraffin-embedded Human colon tissue within the normal limits using anti-MLPH mouse monoclonal antibody. (Heat-induced epitope retrieval by 1mM EDTA in 10mM Tris buffer (pH8.5) at 120°C for 3min, [TA808503]) (1:150)



Immunohistochemical staining of paraffin-embedded Adenocarcinoma of Human endometrium tissue using anti-MLPH mouse monoclonal antibody. (Heat-induced epitope retrieval by 1mM EDTA in 10mM Tris buffer (pH8.5) at 120°C for 3min, [TA808503]) (1:150)



Immunohistochemical staining of paraffin-embedded Human prostate tissue within the normal limits using anti-MLPH mouse monoclonal antibody. (Heat-induced epitope retrieval by 1mM EDTA in 10mM Tris buffer (pH8.5) at 120°C for 3min, [TA808503]) (1:150)



Immunohistochemical staining of paraffin-embedded Carcinoma of Human prostate tissue using anti-MLPH mouse monoclonal antibody. (Heat-induced epitope retrieval by 1mM EDTA in 10mM Tris buffer (pH8.5) at 120°C for 3min, [TA808503]) (1:150)